

Amplitudes, Observables, and Classical Scattering

David A. Kosower,^a Ben Maybee,^b Donal O’Connell^b

^a*Institut de Physique Théorique, CEA, CNRS, Université Paris-Saclay, F-91191 Gif-sur-Yvette cedex, France*

^b*Higgs Centre for Theoretical Physics, School of Physics and Astronomy, The University of Edinburgh, Edinburgh EH9 3JZ, Scotland, UK*

ABSTRACT: We present a formalism for computing classically measurable quantities directly from on-shell quantum scattering amplitudes. We discuss the ingredients needed for obtaining the classical result, and show how to set up the calculation to derive the result efficiently. We do this without specializing to a specific theory. We study in detail two examples in electrodynamics: the momentum transfer in spinless scattering to next-to-leading order, and the momentum radiated to leading order.

Contents

1	Introduction	1
2	Restoring \hbar	3
3	Impulse and radiated momentum in quantum field theory	5
3.1	The incoming state	6
3.2	The impulse on a particle	8
3.3	Impulse in terms of amplitudes	9
3.4	The momentum radiated during a collision	12
3.5	Conservation of momentum	15
4	Classical Point Particles	17
4.1	Wavefunctions	18
4.2	An example wavefunction	24
4.3	Classical impulse	26
4.4	Classical radiation	28
4.5	Conservation of momentum	30
5	Examples	32
5.1	Leading-order electromagnetic impulse	32
5.2	Next-to-leading order impulse	34
5.2.1	Purely Quantum Contributions	35
5.2.2	Triangles	36
5.2.3	Boxes	38
5.2.4	Cut Box	40
5.2.5	Combining Contributions	41
5.2.6	On-Shell Cross Check	44
5.3	Radiation	46
5.4	Momentum Conservation and Radiation Reaction	47
6	Classical Calculations	49
6.1	The classical electromagnetic impulse	50
6.1.1	Leading order	51
6.1.2	Next-to-leading order	52
6.2	Classical Radiated Momentum	54

6.2.1	General expressions	54
6.2.2	Application at leading order	57
6.3	Momentum conservation and the radiation reaction force	58
7	Discussion and conclusions	60
A	Conventions	62
B	Linear Wavefunction Integrals	63
C	Angular integrals	66
D	An Alternative Classical Point of View on Momentum Radiation	67

1 Introduction

The dawn of gravitational-wave astronomy, heralded by the binary black-hole and neutron-star mergers detected by the LIGO collaboration [1], has spawned interest in new techniques for solving the two-body problem in gravity and generating the theoretical waveforms required [2] for event detection as well as parameter extraction from observed mergers. Such techniques would complement methods based on the ‘traditional’ Arnowitt–Deser–Misner Hamiltonian formalism [3, 4], direct post-Newtonian solutions in harmonic gauge [5], long-established effective-one-body (EOB) methods [6, 7], numerical-relativity approaches [8], and the effective-field theory approach pioneered by Goldberger and Rothstein [9–14].

Our broader interest is in exploring the application of modern scattering-amplitudes techniques to this question. Indeed, amplitudes have already been applied successfully to understand aspects of the general relativistic two-body problem, notably to computing the potential between two masses [15–22]. The relevance of a scattering amplitude—in particular, a loop amplitude—to the classical potential was understood in earlier work on gravity as an effective field theory [23–28], and was emphasised by Donoghue and Holstein [29]. This connection will be important for us below. More recently, Damour has emphasised that methods based on scattering amplitudes are relevant to the EOB formalism [30, 31].

An important insight arising from the study of scattering amplitudes is that gravitational amplitudes are simpler than one would expect, and in particular are closely connected to the amplitudes of Yang–Mills theory. This connection is called the double

copy, because gravitational amplitudes are obtained as a product of two Yang–Mills quantities. One can implement this double copy in a variety of ways: the original statement, by Kawai, Lewellen and Tye [32] presents a tree-level gravitational amplitude as a sum over terms, each of which is a product of two tree-level color-ordered Yang–Mills amplitudes (multiplied by appropriate Mandelstam invariants). More recently, Bern, Carrasco and Johansson [33] demonstrated that the double copy can be understood very simply in terms of a diagrammatic expansion of a scattering amplitude: the gravitational numerators are simply the square of the kinematic numerators in Yang–Mills theory, once a property known as colour-kinematics duality is imposed on the numerators. These advances were particularly exciting as they lead to a clear generalisation to loop level. The work of BCJ suggests that gravity may be simpler than it seems, and also more closely connected to Yang–Mills theory than one would guess after inspecting their Lagrangians. We may hope that these insights will be relevant to the real-world physics of gravitational waves.

The double copy indeed connects classical solutions of Yang–Mills theory and gravity. In particular, point charges in Yang–Mills theory map to point sources in gravity [34–37]. This holds true to all orders, even for accelerating particles [35, 38], and we know that the classical radiation emitted by accelerating particles does indeed double copy from Yang–Mills theory to gravity [35, 36, 39, 40], even for a particle moving in an arbitrary manner [36, 40], at least to the first two orders of perturbation theory. There are also indications that the double copy can encompass bound states [41, 42] and perhaps spinning particles [43, 44]. These observations suggest that scattering-amplitudes methods, which naturally incorporate spin, should apply to the classical gravitational physics of spinning matter [45].

In addition to offering us the double copy, the techniques of scattering amplitudes [46] or an analysis of soft limits [47] may help to simplify the computation of physical waveforms relevant for gravitational wave observatories. First, though, we must understand systematically how to extract the classical result using on-shell quantum-mechanical scattering amplitudes in order to take full advantage of amplitude methods in the gravitational-wave problem.

The present article is a step in this direction. We focus directly on physical observables, extracting the classical values from a fully relativistic quantum-mechanical computation. We examine two particular observables. The first is the change in momentum during a scattering event, both with and without accompanying radiation. The second is the radiated momentum during the event. We shall use them as a laboratory to explore certain conceptual and practical issues in approaching the classical limit. Our formalism applies to both electrodynamics and gravity. We will work out in detail explicit examples in electrodynamics, but many of the issues we explore also

arise in the gravitational case. For simplicity, we restrict to spinless scattering in this article.

Our two observables are not completely independent. Indeed the relation between them goes to the heart of one of the difficulties in traditional approaches to classical field theory with point sources. In two-particle scattering in classical electrodynamics, for example, momentum is transferred from one particle to the other via the electromagnetic field, as described by the Lorentz force. But the energy-momentum lost by point particles to radiation is not accounted for by the Lorentz force. Conservation of momentum is restored by taking into account an additional force, the Abraham–Lorentz–Dirac (ALD) force [48–51], see e.g. refs. [52–57] for more recent treatments. Inclusion of this radiation reaction force is not without cost: rather, it leads to the celebrated issues of runaway solutions or causality violations in the classical electrodynamics of point sources.

The quantum-mechanical description of charged-particle scattering should cure these ills. Indeed we will see explicitly that a quantum-mechanical description will conserve energy and momentum in particle scattering automatically.

In the next section, we begin by describing where the factors of \hbar appear in scattering amplitudes. As we will see it is straightforward to make these factors explicit, but nevertheless there are aspects of extracting the classical result that remain obscure. This motivates the following section, where we give a formal definition of the momentum transfer to a particle in quantum field theory and of the expectation value of the momentum emitted in radiation during a scattering event. We also give expressions for these observables in terms of on-shell scattering amplitudes. In sect. 4, we discuss the quantum wavefunctions suitable for studying classical point particles, and derive simplified formulæ for our observables. In sect. 5 we apply our formalism in electrodynamics to compute the two classical observables, the momentum transfer and the radiated momentum, from scattering amplitudes. In sect. 6, we perform the corresponding classical calculations, and compare the results with those obtained from quantum field theory. Section 7 contains a discussion of our results and our conclusions. In the appendices, we provide some details on our conventions and some of the integrals we used, as well as dwelling in more detail on radiation in the classical theory.

2 Restoring \hbar

A straightforward and pragmatic approach to restoring all factors of \hbar in an expression is dimensional analysis¹. We will continue to use relativistically natural units, with

¹Paraphrasing the late Sidney Coleman, natural units are natural to use because one can always put the units, expressed through \hbar s and c s, back through dimensional analysis.

$c = 1$. We denote the dimensions of mass and length by $[M]$ and $[L]$, respectively.

We may choose the dimensions of an n -point scattering amplitude in four dimensions to be $[M]^{4-n}$ even when $\hbar \neq 1$. This is consistent with choosing the dimensions of creation and annihilation operators so that,

$$[a_p, a_{p'}^\dagger] = (2\pi)^3 \delta^{(3)}(\mathbf{p} - \mathbf{p}'), \quad (2.1)$$

where bold symbols (here \mathbf{p} and \mathbf{p}') denote spatial three-vectors. We define single-particle states by,

$$|p\rangle = \sqrt{2E_p} a_p^\dagger |0\rangle. \quad (2.2)$$

The dimension of $|p\rangle$ is thus $[M]^{-1}$. (The vacuum state is taken to be dimensionless.) We further define n -particle asymptotic states as tensor products of these normalised single particle states. In order to avoid an unsightly splatter of factors of 2π , it is convenient to define,

$$\hat{\delta}^{(n)}(p) \equiv (2\pi)^n \delta^{(n)}(p), \quad (2.3)$$

for the n -fold Dirac δ distribution. The scattering matrix S and the transition matrix T are both, of course, dimensionless. We define the amplitudes in four dimensions as usual by

$$\langle p'_1 \cdots p'_m | T | p_1 \cdots p_n \rangle = \mathcal{A}(p_1 \cdots p_n \rightarrow p'_1 \cdots p'_m) \hat{\delta}^{(4)}(p_1 + \cdots + p_n - p'_1 - \cdots - p'_m), \quad (2.4)$$

leading to the advertised dimensions for amplitudes.

When restoring powers of \hbar , we must distinguish between the momentum p^μ of a particle and its wavenumber, which has dimensions of $[L]^{-1}$. This distinction will be important for us later, so we introduce a notation for the wavenumber \bar{p} associated with a momentum p :

$$\bar{p} \equiv p/\hbar. \quad (2.5)$$

In the course of restoring powers of \hbar by dimensional analysis, we first treat the momenta of all particles as genuine momenta. We also treat any mass as a mass rather than the associated Compton wavelength.

When is a point-particle description appropriate? We will consider the scattering of two point-like objects, with momenta $p_{1,2}$, initially separated by a transverse impact parameter b^μ . (The impact parameter is transverse in the sense that $p_i \cdot b = 0$ for $i = 1, 2$.) At the quantum level, the particles are described by wavefunctions. We will discuss these wavefunctions in more detail in sect. 4. We expect the point-particle description to be valid when the separation of the two scattering particles is always

very large compared to their (reduced) Compton wavelengths $\ell_c^{(i)} \equiv \hbar/m_i$, so the point-particle description will be accurate provided that

$$\sqrt{-b^2} \gg \ell_c^{(1,2)}. \quad (2.6)$$

The impact parameter and the Compton wavelengths are not the only scales we must consider, however. The wavefunctions have another intrinsic scale, given by the spread of the wavepackets, ℓ_w . The quantum-mechanical expectation values of observables, as we will discuss, are well-approximated by the corresponding classical ones, when the packet spreads are in the ‘Goldilocks’ zone, $\ell_c \ll \ell_w \ll \sqrt{-b^2}$.

Let us now imagine restoring the \hbar s in a given amplitude. When $\hbar = 1$, the amplitude has dimensions of $[M]^{4-n}$. When $\hbar \neq 1$, the dimensions of the momenta and masses in the amplitude are unchanged. Similarly there is no change to the dimensions of polarisation vectors or tensors or of any Lie-algebraic factors in Yang–Mills theories. However, we must remember that the dimensionless coupling in electrodynamics is $e/\sqrt{\hbar}$. Similarly, in gravity a factor of $1/\sqrt{\hbar}$ appears as the appropriate coupling with dimensions of inverse mass is $\kappa = \sqrt{32\pi G/\hbar}$. The algorithm to restore the dimensions of any amplitude in scalar electrodynamics or scalar gravity is thus simple: each factor of a coupling is multiplied by an additional factor of $1/\sqrt{\hbar}$. For example, an n -point, L -loop amplitude in scalar QED is proportional to $\hbar^{1-n/2-L}$.

This conclusion, though well-known, may be surprising in the present context because it seems naively that as $\hbar \rightarrow 0$, higher multiplicities and higher loop orders are *more* important. As we will see, however, the approach to the classical limits — for observables that make sense classically — effectively forces certain momenta to scale with \hbar . These momenta have the classical interpretation of wavenumbers. Examples include the momenta of massless particles, such as photons or gravitons. In putting the factors of \hbar back into the couplings, we have therefore not yet made manifest all of the physically relevant factors of \hbar . This provides one motivation for the remainder of our paper: we wish to construct on-shell observables which are both classically and quantum-mechanically sensible. We will then carefully analyse the small- \hbar region to understand how scattering amplitudes encode classical physics. We will see that the appropriate treatment is one where point particles have momenta which are fixed as we take \hbar to zero, whereas for massless particles and momentum transfers between massive particles, it is the wavenumber which we should treat as fixed in the limit.

3 Impulse and radiated momentum in quantum field theory

We examine scattering events in which two widely separated particles are prepared at $t \rightarrow -\infty$, and then shot at each other with impact parameter b^μ . We begin with a

discussion of the appropriate incoming state, setting up convenient notation. We then describe the observables of interest.

Our formalism is quite general; for simplicity, we will nonetheless focus on scattering of two stable quanta of different scalar fields with different masses. We will also restrict our attention to scattering processes in which quanta of fields 1 and 2 are both present in the final state. This will happen, for example, if the particles have separately conserved quantum numbers. We also assume that no new quanta of fields 1 and 2 can be produced during the collision, for example because the centre-of-mass energy is too small.

3.1 The incoming state

As we prepare the particles in the far past, the appropriate states are incoming states $|\psi\rangle_{\text{in}}$. We describe the incoming particles by wavefunctions $\phi_i(p_i)$. The main application we have in mind is to the scattering of point-like classical particles, and so we take our wave functions to have reasonably well-defined positions and momenta. We will discuss the requirements on the wavepackets in considerably more detail in sect. 4. In this section we focus on a general discussion of on-shell observables associated with the scattering of localised particles, without specialising to the kinds of wavefunctions which are most appropriate for approaching a classical limit.

The initial state is then,

$$|\psi\rangle_{\text{in}} = \int \hat{d}^4 p_1 \hat{d}^4 p_2 \hat{\delta}^{(+)}(p_1^2 - m_1^2) \hat{\delta}^{(+)}(p_2^2 - m_2^2) \phi_1(p_1) \phi_2(p_2) e^{ib \cdot p_1 / \hbar} |p_1 p_2\rangle_{\text{in}}, \quad (3.1)$$

where $\hat{d}^n p$ absorbs a factor of 2π ; more generally $\hat{d}^n p$ is defined by

$$\hat{d}^n p \equiv \frac{d^n p}{(2\pi)^n}. \quad (3.2)$$

We restrict the integration to positive-energy solutions of the delta functions of $p_i^2 - m_i^2$, as indicated by the (+) superscript in $\hat{\delta}^{(+)}$, as well as absorbing a factor of 2π just as for $\hat{\delta}(p)$,

$$\hat{\delta}^{(+)}(p^2 - m^2) \equiv 2\pi \Theta(p^0) \delta(p^2 - m^2). \quad (3.3)$$

In eq. (3.1) we have translated the wavepacket of particle 1 relative to particle 2 by the impact parameter b . In the following, we will often omit the subscript “in”, any unlabeled state being understood to be an “in” state.

We will find it convenient to further abbreviate the notation for on-shell integrals (over Lorentz-invariant phase space),

$$d\Phi(p_i) \equiv \hat{d}^4 p_i \hat{\delta}^{(+)}(p_i^2 - m_i^2). \quad (3.4)$$

We will generally leave the mass implicit, along with the designation of the integration variable as the first summand when the argument is a sum.

As noted in sect. 2, we follow the standard convention for normalizing states, so that

$$\langle p'|p\rangle = 2E_p \hat{\delta}^{(3)}(\mathbf{p} - \mathbf{p}'). \quad (3.5)$$

As the expression on the right-hand side is the appropriately normalized delta function for the on-shell measure,

$$\int d\Phi(p'_1) 2E_{p'_1} \hat{\delta}^{(3)}(\mathbf{p}_1 - \mathbf{p}'_1) f(p'_1) = f(p_1), \quad (3.6)$$

for any function $f(p'_1)$, we define,

$$\hat{\delta}_\Phi(p_1 - p'_1) \equiv 2E_{p'_1} \hat{\delta}^{(3)}(\mathbf{p}_1 - \mathbf{p}'_1). \quad (3.7)$$

The argument on the left-hand side is understood as a function of four-vectors. This leads to a notationally clearer version of eq. (3.6):

$$\int d\Phi(p'_1) \hat{\delta}_\Phi(p_1 - p'_1) f(p'_1) = f(p_1), \quad (3.8)$$

and of eq. (3.5):

$$\langle p'|p\rangle = \hat{\delta}_\Phi(p - p'). \quad (3.9)$$

We can also rewrite eq. (3.1),

$$|\psi\rangle_{\text{in}} = \int d\Phi(p_1) d\Phi(p_2) \phi_1(p_1) \phi_2(p_2) e^{ib \cdot p_1/\hbar} |p_1 p_2\rangle_{\text{in}}. \quad (3.10)$$

Using this simplified notation, the normalisation condition is

$$\begin{aligned} 1 &= \langle \psi | \psi \rangle \\ &= \int d\Phi(p_1) d\Phi(p_2) d\Phi(p'_1) d\Phi(p'_2) e^{ib \cdot (p_1 - p'_1)/\hbar} \\ &\quad \times \phi_1(p_1) \phi_1^*(p'_1) \phi_2(p_2) \phi_2^*(p'_2) \hat{\delta}_\Phi(p_1 - p'_1) \hat{\delta}_\Phi(p_2 - p'_2) \\ &= \int d\Phi(p_1) d\Phi(p_2) |\phi_1(p_1)|^2 |\phi_2(p_2)|^2. \end{aligned} \quad (3.11)$$

We can obtain this normalization by requiring both wavefunctions ϕ_i to be normalized to unity:

$$\int d\Phi(p_1) |\phi_1(p_1)|^2 = 1. \quad (3.12)$$

3.2 The impulse on a particle

At a gravitational wave observatory, we are of course interested in the gravitational radiation emitted by the source of interest. We will discuss the radiated momentum in sect. 3.4. Gravitational waves also carry information about the potential experienced by, for example, a black hole binary system. This observation motivates our interest in an on-shell observable related to the potential. We choose to explore the *impulse* on a particle during a scattering event: at the classical level, this is simply the total change in the momentum of one of the particles — say particle 1 — during the collision.

To define the observable, we place detectors at asymptotically large distances pointing at the collision region. The detectors measure only the momentum of particle 1. We assume that these detectors cover all possible scattering angles. Let \mathbb{P}_i^μ be the momentum operator for particle i ; the expectation of the first particle's outgoing momentum $p_{\text{out},1}^\mu$ is then

$$\begin{aligned} \langle p_{\text{out},1}^\mu \rangle &= \text{out} \langle \psi | \mathbb{P}_1^\mu | \psi \rangle_{\text{out}} \\ &= \text{out} \langle \psi | \mathbb{P}_1^\mu U(\infty, -\infty) | \psi \rangle_{\text{in}} \\ &= \text{in} \langle \psi | U(\infty, -\infty)^\dagger \mathbb{P}_1^\mu U(\infty, -\infty) | \psi \rangle_{\text{in}}, \end{aligned} \tag{3.13}$$

where $U(\infty, -\infty)$ is the time evolution operator from the far past to the far future. This evolution operator is just the S matrix, so the expectation value is simply,

$$\langle p_{\text{out},1}^\mu \rangle = \text{in} \langle \psi | S^\dagger \mathbb{P}_1^\mu S | \psi \rangle_{\text{in}}. \tag{3.14}$$

We can insert a complete set of states and rewrite the expectation value as,

$$\langle p_{\text{out},1}^\mu \rangle = \sum_X \int d\Phi(r_1) d\Phi(r_2) r_1^\mu |\langle r_1 r_2 X | S | \psi \rangle|^2, \tag{3.15}$$

where we can think of the inserted states as the final state of a scattering process. In this equation, X refers to any other particles which may be created. The intermediate state containing X also necessarily contains exactly one particle each corresponding to fields 1 and 2. Their momenta are denoted by $r_{1,2}$ respectively. The sum over X is a sum over all states, including X empty, and includes phase-space integrals for X non-empty. The phase-space integral over the momenta of particles 1 and 2 along with the sum over states X is what gives a complete sum over all states in the Hilbert space. The expression (3.15) hints at the possibility of evaluating the momentum in terms of on-shell scattering amplitudes.

The physically interesting quantity is rather the change of momentum of the particle during the scattering, so we define,

$$\langle \Delta p_1^\mu \rangle = \langle \psi | S^\dagger \mathbb{P}_1^\mu S | \psi \rangle - \langle \psi | \mathbb{P}_1^\mu | \psi \rangle. \tag{3.16}$$

This impulse is the difference between the expected outgoing and the incoming momenta of particle 1. It is an on-shell observable, defined in both the quantum and the classical theories. Similarly, we can measure the impulse imparted to particle 2. In terms of the momentum operator, \mathbb{P}_2^μ , of quantum field 2, this impulse is evidently,

$$\langle \Delta p_2^\mu \rangle = \langle \psi | S^\dagger \mathbb{P}_2^\mu S | \psi \rangle - \langle \psi | \mathbb{P}_2^\mu | \psi \rangle. \quad (3.17)$$

Returning to the impulse on particle 1, we proceed by writing the scattering matrix in terms of the transition matrix T via $S = 1 + iT$, in order to make contact with the usual scattering amplitudes. The no-scattering (unity) part of the S matrix cancels in the impulse, leaving behind only delta functions that identify the final-state momenta with the initial-state ones in the wavefunction or its conjugate. Using unitarity we obtain the result,

$$\langle \Delta p_1^\mu \rangle = \langle \psi | i[\mathbb{P}_1^\mu, T] | \psi \rangle + \langle \psi | T^\dagger [\mathbb{P}_1^\mu, T] | \psi \rangle. \quad (3.18)$$

3.3 Impulse in terms of amplitudes

Having established a general expression for the impulse, we turn to expressing it in terms of scattering amplitudes. It is convenient to work on the two terms in equation (3.18) separately. For ease of discussion, we define

$$\begin{aligned} I_{(1)}^\mu &\equiv \langle \psi | i[\mathbb{P}_1^\mu, T] | \psi \rangle, \\ I_{(2)}^\mu &\equiv \langle \psi | T^\dagger [\mathbb{P}_1^\mu, T] | \psi \rangle, \end{aligned} \quad (3.19)$$

so that the impulse is $\langle \Delta p_1^\mu \rangle = I_{(1)}^\mu + I_{(2)}^\mu$. Expanding the wavefunction in the first term, $I_{(1)}^\mu$, we find

$$\begin{aligned} I_{(1)}^\mu &= \int d\Phi(p_1) d\Phi(p_2) d\Phi(p'_1) d\Phi(p'_2) e^{ib \cdot (p_1 - p'_1)/\hbar} \phi_1(p_1) \phi_1^*(p'_1) \phi_2(p_2) \phi_2^*(p'_2) \\ &\quad \times i(p_1^\mu - p_1'^\mu) \langle p'_1 p'_2 | T | p_1 p_2 \rangle \\ &= \int d\Phi(p_1) d\Phi(p_2) d\Phi(p'_1) d\Phi(p'_2) e^{ib \cdot (p_1 - p'_1)/\hbar} \phi_1(p_1) \phi_1^*(p'_1) \phi_2(p_2) \phi_2^*(p'_2) \\ &\quad \times i \int d\Phi(r_1) d\Phi(r_2) (r_1^\mu - p_1^\mu) \langle p'_1 p'_2 | r_1 r_2 \rangle \langle r_1 r_2 | T | p_1 p_2 \rangle, \end{aligned} \quad (3.20)$$

where in the second form line we have re-inserted the final-state momenta r_i in order to make manifest the phase independence of the result. We label the states in the incoming wavefunction by $p_{1,2}$, those in the conjugate ones by $p'_{1,2}$. Let us now introduce the momentum shifts $q_i = p'_i - p_i$, and then change variables in the integration from the p'_i

to the q_i . In these variables, the matrix element is,

$$\begin{aligned} \langle p'_1 p'_2 | T | p_1 p_2 \rangle &= \mathcal{A}(p_1 p_2 \rightarrow p'_1, p'_2) \hat{\delta}^{(4)}(p'_1 + p'_2 - p_1 - p_2) \\ &= \mathcal{A}(p_1 p_2 \rightarrow p_1 + q_1, p_2 + q_2) \hat{\delta}^{(4)}(q_1 + q_2), \end{aligned} \quad (3.21)$$

yielding

$$\begin{aligned} I_{(1)}^\mu &= \int d\Phi(p_1) d\Phi(p_2) d\Phi(q_1 + p_1) d\Phi(q_2 + p_2) \\ &\quad \times \phi_1(p_1) \phi_1^*(p_1 + q_1) \phi_2(p_2) \phi_2^*(p_2 + q_2) \hat{\delta}^{(4)}(q_1 + q_2) \\ &\quad \times e^{-ib \cdot q_1 / \hbar} i q_1^\mu \mathcal{A}(p_1 p_2 \rightarrow p_1 + q_1, p_2 + q_2). \end{aligned} \quad (3.22)$$

We remind the reader of the shorthand notation introduced earlier for the phase-space measure,

$$d\Phi(q_1 + p_1) = \hat{d}^4 q_1 \hat{\delta}((p_1 + q_1)^2 - m_1^2) \Theta(p_1^0 + q_1^0). \quad (3.23)$$

We can perform the integral over q_2 in eq. (3.22) using the four-fold delta function. Further relabeling $q_1 \rightarrow q$, we obtain

$$\begin{aligned} I_{(1)}^\mu &= \int d\Phi(p_1) d\Phi(p_2) \hat{d}^4 q \hat{\delta}(2p_1 \cdot q + q^2) \hat{\delta}(2p_2 \cdot q - q^2) \Theta(p_1^0 + q^0) \Theta(p_2^0 - q^0) \\ &\quad \times e^{-ib \cdot q / \hbar} \phi_1(p_1) \phi_1^*(p_1 + q) \phi_2(p_2) \phi_2^*(p_2 - q) \\ &\quad \times i q^\mu \mathcal{A}(p_1 p_2 \rightarrow p_1 + q, p_2 - q). \end{aligned} \quad (3.24)$$

Unusually for a physical observable, this contribution is linear in the amplitude. We emphasize that the incoming and outgoing momenta of this amplitude do *not* correspond to the initial- and final-state momenta of the scattering process, but rather both correspond to the initial-state momenta, as they appear in the wavefunction and in its conjugate. The momentum q looks like a momentum transfer if we examine the amplitude alone, but for the physical scattering process it represents a difference between the momentum within the wavefunction and that in the conjugate. We will call it a ‘momentum mismatch’. As indicated on the first line of eq. (3.20), we should think of this term as an interference of a standard amplitude with an interactionless forward scattering. Diagrammatically, we have learned that

$$\begin{aligned} I_{(1)}^\mu &= \int d\Phi(p_1) d\Phi(p_2) \hat{d}^4 q \hat{\delta}(2p_1 \cdot q + q^2) \hat{\delta}(2p_2 \cdot q - q^2) \Theta(p_1^0 + q^0) \Theta(p_2^0 - q^0) \\ &\quad \times e^{-ib \cdot q / \hbar} i q^\mu \times \begin{array}{c} \phi_1(p_1) \qquad \phi_1^*(p_1 + q) \\ \swarrow \qquad \nearrow \\ \bullet \\ \nwarrow \qquad \searrow \\ \phi_2(p_2) \qquad \phi_2^*(p_2 - q) \end{array} . \end{aligned} \quad (3.25)$$

Turning to the second term, $I_{(2)}^\mu$, in the impulse, we again introduce a complete set of states labelled by r_1 , r_2 and X so that,

$$\begin{aligned} I_{(2)}^\mu &= \langle \psi | T^\dagger [\mathbb{P}_1^\mu, T] | \psi \rangle \\ &= \sum_X \int d\Phi(r_1) d\Phi(r_2) \langle \psi | T^\dagger | r_1 r_2 X \rangle \langle r_1 r_2 X | [\mathbb{P}_1^\mu, T] | \psi \rangle. \end{aligned} \quad (3.26)$$

As above, we can now expand the wavefunctions. We again label the states in the incoming wavefunction by $p_{1,2}$, those in the conjugate ones by $p'_{1,2}$,

$$\begin{aligned} I_{(2)}^\mu &= \sum_X \int \prod_{i=1,2} d\Phi(r_i) d\Phi(p_i) d\Phi(p'_i) \phi_i(p_i) \phi_i^*(p'_i) e^{ib \cdot (p_1 - p'_1)/\hbar} (r_1^\mu - p_1^\mu) \\ &\quad \times \hat{\delta}^{(4)}(p_1 + p_2 - r_1 - r_2 - r_X) \hat{\delta}^{(4)}(p'_1 + p'_2 - r_1 - r_2 - r_X) \\ &\quad \times \mathcal{A}(p_1, p_2 \rightarrow r_1, r_2, r_X) \mathcal{A}^*(p'_1, p'_2 \rightarrow r_1, r_2, r_X). \end{aligned} \quad (3.27)$$

In this expression, r_X denotes the total momentum carried by particles in X . The second term in the impulse can thus be interpreted as a weighted cut of an amplitude; the lowest order contribution is a weighted two-particle cut of a one-loop amplitude.

In order to simplify $I_{(2)}^\mu$, let us again define the momentum shifts $q_i = p'_i - p_i$, and change variables in the integration from the p'_i to the q_i , so that,

$$\begin{aligned} I_{(2)}^\mu &= \sum_X \int \prod_{i=1,2} d\Phi(r_i) d\Phi(p_i) d\Phi(q_i + p_i) \phi_i(p_i) \phi_i^*(p_i + q_i) e^{-ib \cdot q_1/\hbar} (r_1^\mu - p_1^\mu) \\ &\quad \times \hat{\delta}^{(4)}(p_1 + p_2 - r_1 - r_2 - r_X) \hat{\delta}^{(4)}(q_1 + q_2) \\ &\quad \times \mathcal{A}(p_1, p_2 \rightarrow r_1, r_2, r_X) \mathcal{A}^*(p_1 + q_1, p_2 + q_2 \rightarrow r_1, r_2, r_X). \end{aligned} \quad (3.28)$$

We can again perform the integral over q_2 using the four-fold delta function, and relabel $q_1 \rightarrow q$ to obtain,

$$\begin{aligned} I_{(2)}^\mu &= \sum_X \int \prod_{i=1,2} d\Phi(r_i) d\Phi(p_i) \hat{d}^4 q \hat{\delta}(2p_1 \cdot q + q^2) \hat{\delta}(2p_2 \cdot q - q^2) \Theta(p_1^0 + q^0) \Theta(p_2^0 - q^0) \\ &\quad \times \phi_1(p_1) \phi_2(p_2) \phi_1^*(p_1 + q) \phi_2^*(p_2 - q) e^{-ib \cdot q/\hbar} (r_1^\mu - p_1^\mu) \\ &\quad \times \hat{\delta}^{(4)}(p_1 + p_2 - r_1 - r_2 - r_X) \\ &\quad \times \mathcal{A}(p_1, p_2 \rightarrow r_1, r_2, r_X) \mathcal{A}^*(p_1 + q, p_2 - q \rightarrow r_1, r_2, r_X). \end{aligned} \quad (3.29)$$

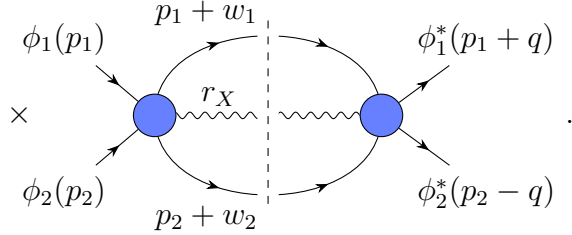
The momentum q is again a momentum mismatch. The momentum transfers $w_i \equiv r_i - p_i$ will play an important role in analyzing the classical limit, so its convenient to

change variables to them from the final-state momenta r_i ,

$$\begin{aligned}
I_{(2)}^\mu = & \sum_X \int \prod_{i=1,2} d\Phi(p_i) \hat{d}^4 w_i \hat{d}^4 q \hat{\delta}(2p_i \cdot w_i + w_i^2) \Theta(p_i^0 + w_i^0) \\
& \times \hat{\delta}(2p_1 \cdot q + q^2) \hat{\delta}(2p_2 \cdot q - q^2) \Theta(p_1^0 + q^0) \Theta(p_2^0 - q^0) \\
& \times \phi_1(p_1) \phi_2(p_2) \phi_1^*(p_1 + q) \phi_2^*(p_2 - q) \\
& \times e^{-ib \cdot q / \hbar} w_1^\mu \hat{\delta}^{(4)}(w_1 + w_2 + r_X) \\
& \times \mathcal{A}(p_1, p_2 \rightarrow p_1 + w_1, p_2 + w_2, r_X) \\
& \times \mathcal{A}^*(p_1 + q, p_2 - q \rightarrow p_1 + w_1, p_2 + w_2, r_X).
\end{aligned} \tag{3.30}$$

Diagrammatically, this second contribution to the impulse is

$$\begin{aligned}
I_{(2)}^\mu = & \sum_X \int \prod_{i=1,2} d\Phi(p_i) \hat{d}^4 w_i \hat{d}^4 q \hat{\delta}(2p_i \cdot w_i + w_i^2) \Theta(p_i^0 + w_i^0) \\
& \times \hat{\delta}(2p_1 \cdot q + q^2) \hat{\delta}(2p_2 \cdot q - q^2) \Theta(p_1^0 + q^0) \Theta(p_2^0 - q^0) \\
& \times e^{-ib \cdot q / \hbar} w_1^\mu \hat{\delta}^{(4)}(w_1 + w_2 + r_X)
\end{aligned} \tag{3.31}$$



3.4 The momentum radiated during a collision

A familiar classical observable is the energy radiated by an accelerating particle, for example during a scattering process. More generally we can compute the four-momentum radiated. In quantum mechanics there is no precise prediction for the energy or the momentum radiated by localised particles; we obtain a continuous spectrum if we measure a large number of events. However we can compute the expectation value of the four-momentum radiated during a scattering process. This is a well-defined observable, and as we will see it is on-shell in the sense that it can be expressed in terms of on-shell amplitudes.

To define the observable, let us again surround the collision with detectors which measure outgoing radiation of some type. We may imagine two different contexts: scattering in electrodynamics with radiation of photons, and gravitational scattering with radiation of gravitons. In both cases, we will call the radiated particles ‘messengers’.

Let \mathbb{K}^μ be the momentum operator for whatever field is radiated; then the expectation of the radiated momentum is

$$\begin{aligned}\langle k^\mu \rangle &= {}_{\text{out}}\langle \psi | \mathbb{K}^\mu U(\infty, -\infty) | \psi \rangle_{\text{in}} \\ &= {}_{\text{in}}\langle \psi | U(\infty, -\infty)^\dagger \mathbb{K}^\mu U(\infty, -\infty) | \psi \rangle_{\text{in}},\end{aligned}\tag{3.32}$$

where $U(\infty, -\infty)$ is again the time evolution operator from the far past to the far future—that is, the S matrix. Once again we can anticipate that the radiation will be expressed in terms of amplitudes. Again rewriting $S = 1 + iT$, the expectation becomes,

$$R^\mu \equiv \langle k^\mu \rangle = {}_{\text{in}}\langle \psi | S^\dagger \mathbb{K}^\mu S | \psi \rangle_{\text{in}} = {}_{\text{in}}\langle \psi | T^\dagger \mathbb{K}^\mu T | \psi \rangle_{\text{in}},\tag{3.33}$$

because $\mathbb{K}^\mu | \psi \rangle_{\text{in}} = 0$ (there are no quanta of radiation in the incoming state).

We can insert a complete set of states $|Xkr_1r_2\rangle$ containing at least one radiated messenger of momentum k , and write the expectation value of the radiated momentum as follows,

$$\begin{aligned}R^\mu &= \sum_X \int d\Phi(k) d\Phi(r_1) d\Phi(r_2) \langle \psi | T^\dagger |k r_1 r_2 X\rangle k_X^\mu \langle k r_1 r_2 X | T | \psi \rangle \\ &= \sum_X \int d\Phi(k) d\Phi(r_1) d\Phi(r_2) k_X^\mu |\langle k r_1 r_2 X | T | \psi \rangle|^2,\end{aligned}\tag{3.34}$$

In this expression, X can again be empty, and k_X^μ is the sum of the explicit messenger momentum k^μ and the momenta of any messengers in the state X . Notice that we are including explicit phase-space integrals for particles 1 and 2, consistent with our assumption that the number of these particles is conserved during the process. The state $|k\rangle$ describes a radiated messenger; the phase space integral over k implicitly includes a sum over its helicity.

Expanding the initial state, we find that the expectation value of the radiated momentum is given by,

$$\begin{aligned}R^\mu &= \sum_X \int d\Phi(k) d\Phi(r_1) d\Phi(r_2) k_X^\mu \left| \int d\Phi(p_1) d\Phi(p_2) e^{ib \cdot p_1 / \hbar} \phi_1(p_1) \phi_2(p_2) \right. \\ &\quad \left. \times \mathcal{A}(p_1, p_2 \rightarrow r_1, r_2, k, r_X) \hat{\delta}^{(4)}(p_1 + p_2 - r_1 - r_2 - k - r_X) \right|^2 \\ &= \sum_X \int d\Phi(k) \prod_{i=1,2} d\Phi(r_i) d\Phi(p_i) d\Phi(p'_i) \phi_i(p_i) \phi_i^*(p'_i) k_X^\mu e^{ib \cdot (p_1 - p'_1) / \hbar} \\ &\quad \times \mathcal{A}(p_1, p_2 \rightarrow r_1, r_2, k, r_X) \hat{\delta}^{(4)}(p_1 + p_2 - r_1 - r_2 - k - r_X) \\ &\quad \times \mathcal{A}^*(p'_1, p'_2 \rightarrow r_1, r_2, k, r_X) \hat{\delta}^{(4)}(p'_1 + p'_2 - r_1 - r_2 - k - r_X).\end{aligned}\tag{3.35}$$

We can again introduce momentum transfers, $q_i = p'_i - p_i$, and trade the integrals over p'_i for integrals over the q_i . One of the four-fold δ functions will again become $\hat{\delta}^{(4)}(q_1 + q_2)$, and we can use it to perform the q_2 integrations. We again relabel $q_1 \rightarrow q$. The integration leaves behind a pair of on-shell δ functions and positive-energy Θ functions just as in eqs. (3.24) and (3.30),

$$\begin{aligned}
R^\mu &= \sum_X \int d\Phi(k) \prod_{i=1,2} d\Phi(r_i) d\Phi(p_i) \hat{d}^4 q \phi_1(p_1) \phi_2(p_2) \phi_1^*(p_1 + q) \phi_2^*(p_2 - q) \\
&\quad \times \hat{\delta}(2p_1 \cdot q + q^2) \hat{\delta}(2p_2 \cdot q - q^2) \Theta(p_1^0 + q^0) \Theta(p_2^0 - q^0) \\
&\quad \times k_X^\mu e^{-ib \cdot q/\hbar} \hat{\delta}^{(4)}(p_1 + p_2 - r_1 - r_2 - k - r_X) \\
&\quad \times \mathcal{A}(p_1, p_2 \rightarrow r_1, r_2, k, r_X) \mathcal{A}^*(p_1 + q, p_2 - q \rightarrow r_1, r_2, k, r_X).
\end{aligned} \tag{3.36}$$

We emphasise that this is an all-orders expression: the amplitude $\mathcal{A}(p_1, p_2 \rightarrow r_1, r_2, k, r_X)$ includes all loop corrections, though of course it can be expanded in perturbation theory. The corresponding real-emission contributions are present in the sum over states X . If we truncate the amplitude at a fixed order in perturbation theory, we should similarly truncate the sum over states. Given that the expectation value is expressed in terms of an on-shell amplitude, it is also appropriate to regard this observable as a fully on-shell quantity. As in eqs. (3.24) and (3.30), q represents a momentum mismatch rather than a momentum transfer. Here too, the scattering momentum transfers $w_i = r_i - p_i$ will play an important role in our later discussion of the classical limit, and it is convenient to change variables from the r_i to make use of them,

$$\begin{aligned}
R^\mu &= \sum_X \int d\Phi(k) \prod_{i=1,2} d\Phi(p_i) \hat{d}^4 w_i \hat{d}^4 q \hat{\delta}(2p_i \cdot w_i + w_i^2) \Theta(p_i^0 + w_i^0) \\
&\quad \times \hat{\delta}(2p_1 \cdot q + q^2) \hat{\delta}(2p_2 \cdot q - q^2) \Theta(p_1^0 + q^0) \Theta(p_2^0 - q^0) \\
&\quad \times \phi_1(p_1) \phi_2(p_2) \phi_1^*(p_1 + q) \phi_2^*(p_2 - q) \\
&\quad \times k_X^\mu e^{-ib \cdot q/\hbar} \hat{\delta}^{(4)}(w_1 + w_2 + k + r_X) \\
&\quad \times \mathcal{A}(p_1, p_2 \rightarrow p_1 + w_1, p_2 + w_2, k, r_X) \\
&\quad \times \mathcal{A}^*(p_1 + q, p_2 - q \rightarrow p_1 + w_1, p_2 + w_2, k, r_X).
\end{aligned} \tag{3.37}$$

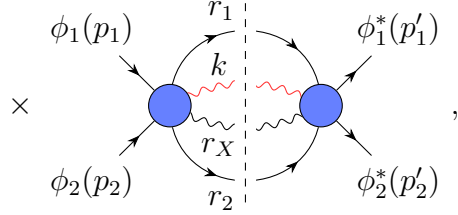
It can be useful to represent the observables diagrammatically. Two equivalent

expressions for the radiated momentum are helpful:

$$R^\mu = \sum_X \int d\Phi(k) d\Phi(r_1) d\Phi(r_2) k_X^\mu \left| \int d\Phi(p_1) d\Phi(p_2) e^{ib \cdot p_1 / \hbar} \hat{\delta}^{(4)}(p_1 + p_2 - r_1 - r_2 - k - r_X) \right. , \quad (3.38)$$

which is a direct pictorial interpretation of equation (3.35), and

$$R^\mu = \sum_X \int d\Phi(k) \prod_{i=1,2} d\Phi(r_i) d\Phi(p_i) d\Phi(p'_i) k_X^\mu e^{ib \cdot (p_1 - p'_1) / \hbar} \times \hat{\delta}^{(4)}(p_1 + p_2 - r_1 - r_2 - k - r_X) \times \hat{\delta}^{(4)}(p'_1 + p'_2 - r_1 - r_2 - k - r_X) \quad (3.39)$$



which demonstrates that we can think of the expectation value as the weighted cut of a loop amplitude. As X can be empty, the lowest-order contribution arises from the weighted cut of a two-loop amplitude.

3.5 Conservation of momentum

The expectation of the radiated momentum is not completely independent of the impulse. In fact the relation between these quantities is physically rich. In the classical electrodynamics of point particles, for example, the impulse is due to a combination of the usual Lorentz force and the ALD radiation reaction (more precisely, the total time integrals of these forces). The Lorentz force exchanges momentum between particles 1 and 2, while the radiation reaction accounts for the irreversible loss of momentum due to radiation. Of course, the ALD force is a notably subtle issue in the classical theory.

In the quantum theory, there can be no question of violating conservation of momentum, so the quantum observables we have defined must already include all the effects which would classically be attributed to both the Lorentz and ALD forces. In particular it must be the case that our definitions respect conservation of momentum. It is easy to demonstrate this formally to all orders using our definitions. Later, in section 5.4, we will indicate how the radiation reaction is included in the impulse more explicitly.

Our scattering processes involve two incoming particles. Consider, then,

$$\begin{aligned}\langle \Delta p_1^\mu \rangle + \langle \Delta p_2^\mu \rangle &= \langle \psi | i[\mathbb{P}_1^\mu + \mathbb{P}_2^\mu, T] | \psi \rangle + \langle \psi | T^\dagger [\mathbb{P}_1^\mu + \mathbb{P}_2^\mu, T] | \psi \rangle \\ &= \langle \psi | i[\sum_i \mathbb{P}_i^\mu, T] | \psi \rangle + \langle \psi | T^\dagger [\mathbb{P}_1^\mu + \mathbb{P}_2^\mu, T] | \psi \rangle,\end{aligned}\tag{3.40}$$

where the sum $\sum \mathbb{P}_i^\mu$ is over all momentum operators in the theory. The second equality above holds because $\mathbb{P}_i^\mu | \psi \rangle = 0$ for $i \neq 1, 2$; only quanta of fields 1 and 2 are present in the incoming state. Next, we use the fact that the total momentum is time independent, in other words

$$\left[\sum \mathbb{P}_i^\mu, T \right] = 0,\tag{3.41}$$

where the sum extends over all fields. Consequently,

$$\langle \psi | i[\mathbb{P}_1^\mu + \mathbb{P}_2^\mu, T] | \psi \rangle = \langle \psi | i[\sum_i \mathbb{P}_i^\mu, T] | \psi \rangle = 0.\tag{3.42}$$

Thus the first term $\langle \psi | i[\mathbb{P}_1^\mu, T] | \psi \rangle$ in the impulse (3.18) describes only the exchange of momentum between particles 1 and 2; in this sense it is associated with the classical Lorentz force (which shares this property) rather than with the classical ALD force (which does not). The second term in the impulse, on the other hand, includes radiation. To make the situation as clear as possible, let us restrict attention to the case where the only other momentum operator is \mathbb{K}^μ , the momentum operator for the messenger field. Then we know that $[\mathbb{P}_1^\mu + \mathbb{P}_2^\mu + \mathbb{K}^\mu, T] = 0$, and conservation of momentum at the level of expectation values is easy to demonstrate:

$$\langle \Delta p_1^\mu \rangle + \langle \Delta p_2^\mu \rangle = -\langle \psi | T^\dagger [\mathbb{K}^\mu, T] | \psi \rangle = -\langle \psi | T^\dagger \mathbb{K}^\mu T | \psi \rangle = -\langle k^\mu \rangle = -R^\mu,\tag{3.43}$$

once again using the fact that there are no messengers in the incoming state.

In the classical theory, radiation reaction is a subleading effect, entering for two-body scattering at order e^6 in perturbation theory in electrodynamics. This is also the case in the quantum theory. To see why, we again expand the operator product in the second term of eq. (3.18) using a complete set of states:

$$\langle \psi | T^\dagger [\mathbb{P}_1^\mu, T] | \psi \rangle = \sum_X \int d\Phi(r_1) d\Phi(r_2) \langle \psi | T^\dagger | r_1 r_2 X \rangle \langle r_1 r_2 X | [\mathbb{P}_1^\mu, T] | \psi \rangle.\tag{3.44}$$

The sum over X is over all states, including an implicit integral over their momenta and a sum over any other quantum numbers. The inserted-state momenta of particles 1 and 2 (necessarily present) are labeled by r_i , and the corresponding integrations over these momenta by $d\Phi(r_i)$. These will ultimately become integrations over the final-state momenta in the scattering. To make the loss of momentum due to radiation explicit at this level, we note that

$$\langle \psi | T^\dagger [\mathbb{P}_1^\mu + \mathbb{P}_2^\mu, T] | \psi \rangle = - \sum_X \int d\Phi(r_1) d\Phi(r_2) \langle \psi | T^\dagger | r_1 r_2 X \rangle \langle r_1 r_2 X | \mathbb{P}_X^\mu T | \psi \rangle, \quad (3.45)$$

where \mathbb{P}_X is the sum over momentum operators of all quantum fields other than the scalars 1 and 2. The sum over all states X will contain, for example, terms where the state X includes messengers of momentum k^μ along with other massless particles. We can further restrict attention to the contributions of the messenger's momentum to \mathbb{P}_X^μ . This contribution produces a net change of momentum of particle 1 given by

$$- \sum_X \int d\Phi(k) d\Phi(r_1) d\Phi(r_2) k^\mu \langle \psi | T^\dagger | k r_1 r_2 X \rangle \langle k r_1 r_2 X | T | \psi \rangle = - \langle k^\mu \rangle, \quad (3.46)$$

with the help of equation (3.34). Thus we explicitly see the net loss of momentum due to radiating messengers. This quantity is suppressed by factors of g because of the additional state. The lowest order case corresponds to $X = \emptyset$; as there are two quanta in $|\psi\rangle$, we must compute the modulus squared of a five-point tree amplitude. The term is proportional to g^6 , where g is the coupling in the elementary three-point amplitude; as far as the impulse is concerned, it is a next-to-next-to-leading order (NNLO) effect. Other particles in the state X , and other contributions to its momentum, describe higher-order effects.

4 Classical Point Particles

The two observables we have discussed — the impulse and the expectation value of the radiated momentum — are designed to be well-defined in both the quantum and the classical theories. As we approach the classical limit, these expectation values should reduce to the classical impulse and the classical radiated momentum. This should ensure that we are able to explore the $\hbar \rightarrow 0$ limit.

We have already discussed in sect. 2 how to make explicit the factors of \hbar in the observables. We must still discuss the issue of suitable wavefunctions. We must first ensure that the chosen wavefunctions have the desired classical limit. At that point, we could in principle perform the full quantum calculation, using the specific

wavefunction we choose, and expand in the $\hbar \rightarrow 0$ limit at the end. However, we also want to choose wavefunctions that allow us to approach the limit as early as possible in the calculation, without relying on their detailed properties. This will lead us to impose stronger constraints on the choice than the mere existence of a suitable classical limit.

4.1 Wavefunctions

Heuristically, the wavefunctions for the scattered particles must satisfy two separate conditions. We will take these to be wavepackets, characterized by a smearing or spread in momenta². That spread should not be too large, so that the interaction with the other particle cannot peer into the details of the wavepacket. At the same time, the details of the wavepacket should not be sensitive to quantum effects.

Let us ground our intuition about scales by first examining nonrelativistic wavefunctions. An example of a minimum-uncertainty wavefunction in momentum space (ignoring normalization) for a particle of mass m growing sharper in the $\hbar \rightarrow 0$ limit has the form,

$$\exp\left(-\frac{\mathbf{p}^2}{2\hbar m \ell_c / \ell_w^2}\right) = \exp\left(-\frac{\mathbf{p}^2}{2m^2 \ell_c^2 / \ell_w^2}\right), \quad (4.1)$$

where ℓ_c is the particle's Compton wavelength, and where ℓ_w is an additional parameter with dimensions of length. We can obtain the conjugate in position space by Fourier-transforming,

$$\exp\left(-\frac{(\mathbf{x} - \mathbf{x}_0)^2}{2\ell_w^2}\right). \quad (4.2)$$

The precision with which we know the particle's location is given by ℓ_w , which we could take as an intrinsic measure of the wavefunction's spread.

This suggests that in considering relativistic wavefunctions, we should also take the dimensionless parameter controlling the approach to the classical limit in momentum space to be the square of the ratio of the Compton wavelength ℓ_c to the intrinsic spread ℓ_w ,

$$\xi \equiv \left(\frac{\ell_c}{\ell_w}\right)^2. \quad (4.3)$$

We obtain the classical result by studying the behavior of observables as $\xi \rightarrow 0$. Towards the limit the wavefunctions must be sharply peaked around the classical value for the momenta, $\check{p}_i = m_i u_i$ with the classical four-velocities u_i normalized to $u_i^2 = 1$.

²Evaluating positions and uncertainties therein in relativistic field theory is a bit delicate, and we will not consider the question in this article.

We can express this requirement through the conditions,

$$\begin{aligned}
\langle p_i^\mu \rangle &= \int d\Phi(p_i) p_i^\mu |\phi(p_i)|^2 = m_i \check{u}_i^\mu f_{p,i}(\xi), \\
f_{p,i}(\xi) &= 1 + \mathcal{O}(\xi^{\beta'}), \\
\check{u}_i \cdot u_i &= 1 + \mathcal{O}(\xi^{\beta''}), \\
\sigma^2(p_i)/m_i^2 &= \langle (p_i - \langle p_i \rangle)^2 \rangle / m_i^2 \\
&= (\langle p_i^2 \rangle - \langle p_i \rangle^2) / m_i^2 = c_\Delta \xi^\beta,
\end{aligned} \tag{4.4}$$

where c_Δ is a constant of order unity, and the β s are simple rational exponents. (The integration measure for p_i enforces $\langle p_i^2 \rangle = m_i^2$.) For the simplest wavefunctions, $\beta = 1$. This spread around the classical value is not necessarily positive, as the difference $p_i - \langle p_i \rangle$ may be spacelike, and the expectation of its Lorentz square possibly negative. For that reason, we should resist the usual temptation of taking its square root to obtain a variance.

Because of the phase-space integrals over the initial-state momenta, which enforce the on-shell conditions $p_i^2 = m_i^2$, the only Lorentz invariant built out of each p_i is constant, and so the wavefunction cannot usefully depend on it. This means the wavefunction must depend on at least one four-vector parameter. The simplest wavefunctions will depend on exactly one four-vector, which we can think of as the (classical) four-velocity u of the corresponding particle. It can depend only on the dimensionless combination $p \cdot u/m$ in addition to the parameter ξ . The simplest form will be a function of these two in the combination $p \cdot u/(m\xi)$, so that large deviations from mu will be suppressed in a classical quantity. The wavefunction will have additional dependence on ξ in its normalization.

To see the meaning of the constraints more quantitatively, let us examine $I_{(1)}^\mu$ (3.24) more closely. It has the form of an amplitude integrated over the on-shell phase space for both of the incoming momenta, subject to additional δ function constraints — and then weighted by a phase $e^{-ib \cdot q/\hbar}$ dependent on the momentum mismatch q , and finally integrated over all q . As one nears the classical limit, the wavefunction and its conjugate should both represent the particle, that is they should be sharply peaked, and in addition their overlap should be $\mathcal{O}(1)$, up to corrections of $\mathcal{O}(\xi)$. The amplitude will vary slowly on the scale of the wavefunction when one is close to the limit. We will integrate the momentum mismatch q over all possible values, so it is somewhat a matter of taste how we normalize it. Nonetheless, if we take q_0 to be a ‘characteristic’ value of q , requiring the overlap to be $\mathcal{O}(1)$ is equivalent to requiring that $\phi^*(p+q)$ does not differ much from $\phi^*(p)$, which in turn requires that the derivative at p is small

or that,

$$\frac{q_0 \cdot u_i}{m\xi} \ll 1. \quad (4.5)$$

If we scale q by $1/\hbar$, replacing the momentum by a wavenumber, this constraint takes the following form,

$$\bar{q}_0 \cdot u_i \ell_w \ll \sqrt{\xi}. \quad (4.6)$$

We next examine another rapidly varying factor that appears in all our integrands, the delta functions in q arising from the on-shell constraints on the conjugate momenta p'_i . These delta functions, appearing in eqns. (3.24,3.30,3.37), take the form,

$$\hat{\delta}(2p_i \cdot q + q^2) = \frac{1}{\hbar m_i} \hat{\delta}(2\bar{q} \cdot u_i + \ell_c \bar{q}^2). \quad (4.7)$$

The integration over the initial momenta p_i and the initial wavefunctions will smear out these delta functions to sharply peaked functions whose scale is the same order as the original wavefunctions. As ξ gets smaller, this function will turn back into a delta function imposed on the \bar{q} integration. In addition to its dependence on ξ , it will depend on two additional dimensionless ratios,

$$\ell_c \sqrt{-\bar{q}^2} \quad \text{and} \quad \frac{\bar{q} \cdot u_i}{\sqrt{-\bar{q}^2}}. \quad (4.8)$$

(The characteristic momentum mismatch q is necessarily spacelike.) Let us call $1/\sqrt{-\bar{q}^2}$ a ‘scattering length’ ℓ_s . In terms of this length, our two dimensionless ratios are,

$$\frac{\ell_c}{\ell_s} \quad \text{and} \quad \bar{q} \cdot u_i \ell_s. \quad (4.9)$$

The argument of the delta function is polynomial in the two ratios, so we expect them to be constrained to be of order an appropriate power of the spread ξ . The direction-averaging implicit in the integration over the p_i will lead to a constraint on two positive quantities built out of the ratios, so in general we expect both to be constrained independently. As suggested again by the nonrelativistic limit, the smallest reasonable power of ξ we can imagine emerging as a constraint from the later \bar{q} integration is one-half,

$$\begin{aligned} \frac{\ell_c}{\ell_s} &\lesssim \sqrt{\xi}, \\ \bar{q} \cdot u_i \ell_s &\lesssim \sqrt{\xi}. \end{aligned} \quad (4.10)$$

If we take a higher power of ξ , the constraints would grow stronger. If we had not already scaled out a factor of \hbar from q , these constraints would make it natural to do so. Combining the second constraint with eq. (4.6), we obtain the constraint $\ell_w \ll \ell_s$.

The first constraint is weaker, $\ell_w \lesssim \ell_s$, but on physical grounds as well we should expect the stronger one: only if the wavefunction spread is much smaller than the scattering length can we expect the interaction's probing of the internals of the particle to be negligible.

Combining the stronger constraint with $\xi \ll 1$, we obtain our first version of the ‘Goldilocks’ inequalities,

$$\ell_c \ll \ell_w \ll \ell_s. \quad (4.11)$$

As we shall see later in the explicit evaluation of $I_{(1)}^\mu$, $\ell_s \sim \sqrt{-b^2}$; this follows on dimensional grounds along with the observation that the integrals in $I_{(1)}^\mu$ lead to no large parameter-free dimensionless numbers. This gives us the second version of the ‘Goldilocks’ requirement,

$$\ell_c \ll \ell_w \ll \sqrt{-b^2}. \quad (4.12)$$

The combination of eq. (4.6) and the second constraint in eq. (4.10) yields a stronger restriction than the first one in eq. (4.10). We should not expect a similar strengthening of the second restriction; the sharp peaking alone will not force the left-hand side to be much smaller than the right-hand side. This means that we should expect $\bar{q} \cdot u_i$ to be smaller than, but still of order, $\sqrt{\xi}/\ell_s$. If we compare the two terms in the argument to the delta function (4.7), we see that the second term,

$$\ell_c \bar{q}^2 \sim \frac{\ell_c}{\ell_s} \frac{1}{\ell_s} \ll \frac{\sqrt{\xi}}{\ell_s}, \quad (4.13)$$

so that $\ell_c \bar{q}^2 \ll \bar{q} \cdot u_i$, and the second term should be negligible. There is one caveat to the implied simplification, which we will mention below.

In computing the classical observable, we cannot simply set $\xi = 0$. Indeed, we don't even want to fully take the $\xi \rightarrow 0$ limit. Rather, we want to take the leading term in that limit. This term may in fact be proportional to a power of ξ . To understand this, we should take note of one additional length scale in the problem, namely the classical radius of the point particle. In electrodynamics, this is $\rho_{cl} = e^2/(4\pi m)$. However,

$$\rho_{cl} = \frac{\hbar e^2}{4\pi \hbar m} = \alpha \ell_c, \quad (4.14)$$

where α is the usual, dimensionless, electromagnetic coupling. Dimensionless ratios of ρ_{cl} to other length scales will be the expansion parameters in classical observables; but as this relation shows, they too will vanish in the $\xi \rightarrow 0$ limit. There are really three dimensionless parameters we must consider: ξ ; ℓ_w/ℓ_s ; and ρ_{cl}/ℓ_s . We want to retain the full dependence on the latter, while considering only effects independent of the first two.

Under the influence of a perturbatively weak interaction (such as electrodynamics or gravity) below the particle-creation threshold, we expect a wavepacket’s shape to be distorted slightly, but not radically changed by the scattering. We would expect the outgoing particles to be characterized by wavepackets similar to those of the incoming particles. However, using a wavepacket basis of states for the state sums in sect. 3 would be cumbersome, inconvenient, and computationally less efficient than the plane-wave states we used. We expect the narrow peaking of the wavefunction to impose constraints on the momentum transfers as they appear in higher-order corrections to the impulse $I_{(2)}^\mu$, and in the leading contribution to the radiation reaction R^μ (3.37); but we will need to see this narrowness indirectly, via assessments of the spread as in eq. (4.4) rather than directly through the presence of a wavefunction (or wavefunction mismatch) factors in our observables. We can estimate the spread $\sigma^2(r_i)$ in a final-state momentum r_i as follows,

$$\begin{aligned}
\sigma^2(r_i)/m_i^2 &= \langle (r_i - \langle r_i \rangle)^2 \rangle / m_i^2 \\
&= (\langle r_i^2 \rangle - \langle r_i \rangle^2) / m_i^2 \\
&= 1 - (\langle p_i \rangle + \langle \Delta p_i \rangle)^2 / m_i^2 \\
&= \sigma^2(p_i) / m_i^2 - \langle \Delta p_i \rangle \cdot (2\langle p_i \rangle + \langle \Delta p_i \rangle) / m_i^2.
\end{aligned} \tag{4.15}$$

So long as $\langle \Delta p_i \rangle / m_i \lesssim \sigma^2(p_i) / m_i^2$, the second term will not greatly increase the result, and the spread in the final-state momentum will be of the same order as that in the initial-state momentum. Whether this condition holds depends on the details of the wavefunction. Even if it is violated, so long as $\langle \Delta p_i \rangle / m_i \lesssim c'_\Delta \xi^{\beta'''}$ with c'_Δ a constant of $\mathcal{O}(1)$, then the final-state momentum will have a narrow spread towards the limit. (It would be broader than the initial-state momentum spread, but that does not affect the applicability of our results.)

The magnitude of $\langle \Delta p_i \rangle$ can be determined perturbatively. The leading-order value comes from $I_{(1)}^\mu$, with $I_{(2)}^\mu$ and radiative corrections contributing yet-smaller corrections. As we shall see, these computations reveal $\langle \Delta p_i \rangle / m_i$ to scale like $\sqrt{\xi}$ and be numerically much smaller. This in turn implies that for perturbative consistency, the ‘characteristic’ values of momentum transfers w_i inside the definition of R must also be very small compared to $m_i \sqrt{\xi}$. (This constraint is in fact much weaker than implied by the leading-order value of $\langle \Delta p_i \rangle$.) Just as for q_0 in eq. (4.5), we should scale these momentum transfers by $1/\hbar$, replacing them by wavenumbers \bar{w}_i . The corresponding scattering lengths $\ell'_s = \sqrt{-w_{1,2}^2}$ must again satisfy $\ell'_s \gg \ell_w$. If we now examine the energy-momentum-conserving delta function in eq. (3.37), rewritten in terms of momentum transfers,

$$\hat{\delta}^{(4)}(w_1 + w_2 + k + r_X), \tag{4.16}$$

we see that all radiated momenta k and r_X must likewise be small compared to $m_i\sqrt{\xi}$: all their energy components must be positive and hence no cancellations are possible inside the delta function. The typical values of these momenta should again be scaled by $1/\hbar$ and replaced by wavenumbers.

What about loop integrations? As we integrate the loop momentum ℓ over all values, it is again a matter of taste how we scale it. If it is the momentum of a (virtual) massless line, however, unitarity considerations suggest that as the natural scaling is to remove a factor of \hbar in real-emission contributions, we should likewise do so for virtual lines. More generally, we should scale those differences of the loop momentum with external legs that correspond to massless particles, and replace them by wavenumbers. Moreover, unitarity considerations also suggest that we should choose the loop momentum to be that of a massless line in the loop, if there is one.

In general, we may not be able to approach the $\hbar \rightarrow 0$ limit of each contribution to an observable separately, because they may contain terms which are singular, having too many inverse powers of \hbar . We find that such singular terms meet one of two fates: they are multiplied by functions which vanish in the regime of validity of the limit; or they cancel in the sum over all contributions. We cannot yet offer a general argument that such troublesome terms necessarily disappear in one of these two manners. We can treat independently contributions whose singular terms ultimately cancel in the sum, so long as we expand each contribution in a Laurent series in \hbar .

Integrand factors that appear uniformly in all contributions — that is, factors which appear directly in a final expression after cancellation of terms singular in the $\hbar \rightarrow 0$ limit — can benefit from applying two simplifications to the integrand: setting p_i to $m_i u_i$, and truncating at the lowest order in \hbar or ξ . For other factors, we must be careful to expand in a Laurent series. As mentioned above, inside the on-shell delta functions $\hat{\delta}(2p_i \cdot \bar{q} \pm \hbar \bar{q}^2)$ we can neglect the $\hbar \bar{q}^2$ term; this is true so long as the factors multiplying these delta functions are not singular in \hbar . If they are indeed nonsingular (after summing over terms), we can safely neglect the second term inside such delta functions, and replace them by $\hat{\delta}(2p_1 \cdot \bar{q})$. A similar argument allows us to neglect the $\hbar \bar{q}^0$ term inside the positive-energy theta functions; the \bar{q} integration then becomes independent of them. Similar arguments, and caveats, apply to the squared momentum-transfer terms $\hbar \bar{w}_i^2$ appearing inside on-shell delta functions in higher-order contributions, along with the energy components \bar{w}_i^0 appearing inside positive-energy theta functions. They can be neglected so long as the accompanying factors are not singular in \hbar . If accompanying factors *are* singular as $\hbar \rightarrow 0$, then we may need to retain such formally suppressed $\hbar \bar{q}^2$ or $\hbar \bar{w}_i^2$ terms inside delta functions. We will see an example of this in the calculation of the NLO contributions to the impulse in sect. 5.

It will be convenient to introduce a notation to allow us to manipulate integrands

under the eventual approach to the $\hbar \rightarrow 0$ limit; we will use large angle brackets for the purpose,

$$\left\langle\left\langle f(p_1, p_2, \dots) \right\rangle\right\rangle \equiv \int d\Phi(p_1) d\Phi(p_2) |\phi_1(p_1)|^2 |\phi_2(p_2)|^2 f(p_1, p_2, \dots), \quad (4.17)$$

where the integration over both p_1 and p_2 is implicit. Within the angle brackets, we have approximated $\phi(p+q) \simeq \phi(p)$, and when evaluating the integrals (implicit in the large angle brackets), we will also set $p_i \simeq m_i u_i$, along with the other simplifications discussed above.

4.2 An example wavefunction

It will be helpful to look at the scales that arise in calculations in the context of a specific example for a wavefunction. For this purpose we take a linear exponential,

$$\phi(p_1) = \mathcal{N} m_1^{-1} \exp\left[-\frac{p_1 \cdot u}{\hbar \ell_c / \ell_w^2}\right] = \mathcal{N} m_1^{-1} \exp\left[-\frac{p_1 \cdot u}{m_1 \xi}\right]. \quad (4.18)$$

In this function, u is a dimensionless four-vector; we will ultimately identify it as the four-velocity of particle 1, and normalize it to $u^2 = 1$. (For the moment, we keep its normalization general.) As discussed in the previous section, ℓ_w characterizes the ‘intrinsic’ spread of the wavepacket. In spite of the linearity of the exponent in p_1 , this function gives rise to the Gaussian of eq. (4.1) in the nonrelativistic limit in the rest frame of u . (The wavefunction shares some features with relativistic wavefunctions discussed in ref. [58].)

The normalization condition (3.12) requires,

$$\mathcal{N} = \frac{2\sqrt{2}\pi}{\xi^{1/2} K_1^{1/2}(2/\xi)}, \quad (4.19)$$

where K_1 is a modified Bessel function of the second kind. For details of this computation and following ones, see appendix B. We can compute the spread of the wavepacket straightforwardly, obtaining

$$\frac{\langle(\Delta p_1)^2\rangle}{\langle p_1^2\rangle} = 1 - \frac{K_2^2(2/\xi)}{K_1^2(2/\xi)}. \quad (4.20)$$

As we approach the classical region, where $\xi \rightarrow 0$, the wavefunction indeed becomes sharply peaked, as

$$\frac{\langle(\Delta p_1)^2\rangle}{\langle p_1^2\rangle} \rightarrow -\frac{3}{2}\xi + \mathcal{O}(\xi^2). \quad (4.21)$$

Next, let us consider the implications of the on-shell delta function. Examine a wavefunction integral similar to $I_{(1)}^\mu$, but with a simpler integrand,

$$T_1 = \int d\Phi(p_1) \phi(p_1) \phi^*(p_1 + q) \hat{\delta}(2p_1 \cdot q + q^2). \quad (4.22)$$

With ϕ chosen to be the linear exponential (4.18), this integral simplifies,

$$T_1 = \frac{1}{\hbar m_1} \eta_1(\bar{q}; p_1) \int d\Phi(p_1) \hat{\delta}(2p_1 \cdot \bar{q}/m_1 + \hbar \bar{q}^2/m_1) |\phi(p_1)|^2, \quad (4.23)$$

where we have also replaced $q \rightarrow \hbar \bar{q}$, and where

$$\eta_1(\bar{q}; p_1) = \exp \left[-\frac{\hbar \bar{q} \cdot u}{m_1 \xi} \right]. \quad (4.24)$$

The remaining integrations in T_1 are evaluated in appendix B, yielding

$$T_1 = \frac{1}{4\hbar m_1 \sqrt{(\bar{q} \cdot u)^2 - \bar{q}^2} K_1(2/\xi)} \exp \left[-\frac{2}{\xi} \frac{\sqrt{(\bar{q} \cdot u)^2 - \bar{q}^2}}{\sqrt{-\bar{q}^2}} \sqrt{1 - \hbar^2 \bar{q}^2 / (4m_1^2)} \right]. \quad (4.25)$$

(The wavenumber transfer is necessarily spacelike, so that $-\bar{q}^2 > 0$.)

As we approach the $\hbar, \xi \rightarrow 0$ limit, we may expect this function to be concentrated in a small region in \bar{q} . Towards the limit, the dependence on the magnitude is just given by the prefactor. To understand the behavior in the boost and angular degrees of freedom, we may note that

$$\frac{1}{K_1(2/\xi)} \sim \frac{2}{\sqrt{\pi} \sqrt{\xi}} \exp \left[\frac{2}{\xi} \right], \quad (4.26)$$

and that $\hbar \sqrt{\xi}$ is of order ξ , so that overall T_1 has the form,

$$\frac{1}{\xi} \exp \left[-\frac{f(\bar{q})}{\xi} \right], \quad (4.27)$$

which becomes a delta function as $\xi \rightarrow 0$ limit. The more detailed discussion in the appendix shows that it has the form,

$$\delta(\bar{q} \cdot u), \quad (4.28)$$

as anticipated in the previous section.

4.3 Classical impulse

We have written the impulse in terms of two terms, $\langle \Delta p_1^\mu \rangle = I_{(1)}^\mu + I_{(2)}^\mu$, and expanded these in terms of wavefunctions in equations (3.24) and (3.30). We will now discuss the classical limit of these terms in detail, applying the rules discussed in sect. 4.1.

We begin with the first and simplest term in the impulse, $I_{(1)}^\mu$, given in eq. (3.24), here recast in the notation of eq. (4.17) in preparation,

$$I_{(1),\text{cl}}^\mu = i \left\langle\left\langle \int \hat{d}^4 q \, \hat{\delta}(2p_1 \cdot q + q^2) \hat{\delta}(2p_2 \cdot q - q^2) \Theta(p_1^0 + q^0) \Theta(p_2^0 - q^0) \right. \right. \\ \left. \left. \times e^{-ib \cdot q / \hbar} q^\mu \mathcal{A}(p_1 p_2 \rightarrow p_1 + q, p_2 - q) \right\rangle\right\rangle. \quad (4.29)$$

Rescale $q \rightarrow \hbar \bar{q}$; drop the q^2 inside the on-shell delta functions; and also remove the overall factor of g^2 and accompanying \hbar s from the amplitude, to obtain the leading-order (LO) contribution to the classical impulse,

$$\Delta p_1^{\mu,(0)} \equiv I_{(1),\text{cl}}^{\mu,(0)} = i \frac{g^2}{4} \left\langle\left\langle \hbar^2 \int \hat{d}^4 \bar{q} \, \hat{\delta}(\bar{q} \cdot p_1) \hat{\delta}(\bar{q} \cdot p_2) \right. \right. \\ \left. \left. \times e^{-ib \cdot \bar{q}} \bar{q}^\mu \bar{\mathcal{A}}^{(0)}(p_1, p_2 \rightarrow p_1 + \hbar \bar{q}, p_2 - \hbar \bar{q}) \right\rangle\right\rangle. \quad (4.30)$$

We denote by $\bar{\mathcal{A}}^{(L)}$ the reduced L -loop amplitude, that is the L -loop amplitude with a factor of $g/\sqrt{\hbar}$ removed for every interaction: in the electromagnetic case, this removes a factor of $e/\sqrt{\hbar}$, while in the gravitational case, we would remove a factor of $\kappa/\sqrt{\hbar}$. In general, this rescaled fixed-order amplitude depends only on \hbar -free ratios of couplings; in pure electrodynamics or gravitational theory, it is independent of couplings. In pure electrodynamics, it depends on the charges of the scattering particles. While it is free of the powers of \hbar discussed in sect. 2, it will in general still scale with an overall power of \hbar thanks to dependence on momentum mismatches or transfers. As we shall see in the next section, additional inverse powers of \hbar emerging from $\bar{\mathcal{A}}$ will cancel the \hbar^2 prefactor and yield a nonvanishing result.

As a reminder, while this contribution to a physical observable is linear in an amplitude, it arises from an expression involving wavefunctions multiplied by their conjugates. This is reflected in the fact that both the ‘incoming’ and ‘outgoing’ momenta in the amplitude here are in fact initial-state momenta. Any phase which could be introduced by hand in the initial state would thus cancel out of the observable.

The LO classical impulse is special in that only the first term (3.24) contributes. In general, it is only the sum of the two terms in eq. (3.18) that has a well-defined

classical limit. We may write this sum as

$$I_{\text{cl}}^\mu = i \left\langle\left\langle \hbar^{-2} \int \hat{d}^4 q \hat{\delta}(2p_1 \cdot q + q^2) \hat{\delta}(2p_2 \cdot q - q^2) \Theta(p_1^0 + q^0) \Theta(p_2^0 - q^0) e^{-ib \cdot q/\hbar} \mathcal{I}^\mu \right\rangle\right\rangle, \quad (4.31)$$

where the *impulse kernel* \mathcal{I}^μ is defined as,

$$\begin{aligned} \mathcal{I}^\mu &\equiv \hbar^2 q^\mu \mathcal{A}(p_1 p_2 \rightarrow p_1 + q, p_2 - q) \\ &\quad - i \hbar^2 \sum_X \int \prod_{i=1,2} \hat{d}^4 w_i \hat{\delta}(2p_i \cdot w_i + w_i^2) \Theta(p_i^0 + w_i^0) \\ &\quad \quad \times w_1^\mu \hat{\delta}^{(4)}(w_1 + w_2 + r_X) \\ &\quad \quad \times \mathcal{A}(p_1 p_2 \rightarrow p_1 + w_1, p_2 + w_2, r_X) \\ &\quad \quad \times \mathcal{A}^*(p_1 + q, p_2 - q \rightarrow p_1 + w_1, p_2 + w_2, r_X). \end{aligned} \quad (4.32)$$

The prefactor in eq. (4.31) and the normalization of \mathcal{I}^μ are chosen so that the latter is $\mathcal{O}(\hbar^0)$ in the classical limit. At leading order, the only contribution comes from the tree-level four-point amplitude in the first term, and after passing to the classical limit, we recover eq. (4.30) as expected. At next-to-leading order (NLO), both terms contribute. The contribution from the first term is from the one-loop amplitude, while that from the second term has $X = \emptyset$, so that both the amplitude and conjugate inside the integral are tree-level four-point amplitudes.

Focus on the NLO contributions, and pass to the classical limit. As discussed in sect. 4.1 we may neglect the q^2 terms in the delta functions present in eq. (4.31) so long as any singular terms in the impulse kernel cancel. We then rescale $q \rightarrow \hbar \bar{q}$; and remove an overall factor of g^4 and accompanying \hbar s from the amplitudes. In addition, we may rescale $w \rightarrow \hbar \bar{w}$. However, since singular terms may be present in the individual summands of the impulse kernel — in general, they will cancel against singular terms emerging from the loop integration in the first term in eq. (4.32) — we are not entitled to drop the w^2 inside the on-shell delta functions. We obtain,

$$\Delta p_1^{\mu,(1)} = i \frac{g^4}{4} \left\langle\left\langle \int \hat{d}^4 \bar{q} \hat{\delta}(p_1 \cdot \bar{q}) \hat{\delta}(p_2 \cdot \bar{q}) e^{-ib \cdot \bar{q}} \mathcal{I}_{\text{cl}}^{\mu,(1)} \right\rangle\right\rangle, \quad (4.33)$$

where,

$$\begin{aligned} \mathcal{I}_{\text{cl}}^{\mu,(1)} &= \hbar \bar{q}^\mu \bar{\mathcal{A}}^{(1)}(p_1 p_2 \rightarrow p_1 + \hbar \bar{q}, p_2 - \hbar \bar{q}) \\ &\quad - i \hbar^3 \int \hat{d}^4 \bar{w} \hat{\delta}(2p_1 \cdot \bar{w} + \hbar \bar{w}^2) \hat{\delta}(2p_2 \cdot \bar{w} - \hbar \bar{w}^2) \bar{w}^\mu \\ &\quad \quad \times \bar{\mathcal{A}}^{(0)}(p_1, p_2 \rightarrow p_1 + \hbar \bar{w}, p_2 - \hbar \bar{w}) \\ &\quad \quad \times \bar{\mathcal{A}}^{(0)*}(p_1 + \hbar \bar{q}, p_2 - \hbar \bar{q} \rightarrow p_1 + \hbar \bar{w}, p_2 - \hbar \bar{w}). \end{aligned} \quad (4.34)$$

Once again, we will see in the next section that additional inverse powers of \hbar will arise from the amplitudes, and will yield a finite and nonvanishing answer in the classical limit.

4.4 Classical radiation

Our starting point for obtaining a prediction for the classical limit of the momentum emitted in radiation is eq. (3.37), which we recast in the notation of eq. (4.17),

$$\begin{aligned}
R_{\text{cl}}^\mu &= \sum_X \left\langle\left\langle \int d\Phi(k) \prod_{i=1,2} \hat{d}^4 w_i \hat{d}^4 q \hat{\delta}(2p_i \cdot w_i + w_i^2) \Theta(p_i^0 + w_i^0) \right. \right. \\
&\quad \times \hat{\delta}(2p_1 \cdot q + q^2) \hat{\delta}(2p_2 \cdot q - q^2) \Theta(p_1^0 + q^0) \Theta(p_2^0 - q^0) \\
&\quad \times k_X^\mu e^{-ib \cdot q/\hbar} \hat{\delta}^{(4)}(w_1 + w_2 + k + r_X) \\
&\quad \times \mathcal{A}(p_1 p_2 \rightarrow p_1 + w_1, p_2 + w_2, k, r_X) \\
&\quad \left. \left. \times \mathcal{A}^*(p_1 + q, p_2 - q \rightarrow p_1 + w_1, p_2 + w_2, k, r_X) \right\rangle\right\rangle. \tag{4.35}
\end{aligned}$$

Recall that k_X^μ is the sum of the messenger momentum k^μ and the momenta of other messengers in X . We will determine the classical limit using precisely the same logic as in the previous subsection. Let us again focus on the leading contribution, with $X = \emptyset$. Once again, rescale $q \rightarrow \hbar \bar{q}$, and drop the q^2 inside the on-shell delta functions. Here, remove an overall factor of g^6 and accompanying \hbar s from the amplitude and its conjugate. In addition, rescale the momentum transfers $w \rightarrow \hbar \bar{w}$ and the radiation momenta, $k \rightarrow \hbar \bar{k}$. At leading order there is no sum, so there will be no hidden cancellations, and we may drop the w_i^2 inside the on-shell delta functions to obtain,

$$\begin{aligned}
R_{\text{cl}}^{\mu,(0)} &= g^6 \left\langle\left\langle \hbar^4 \int d\Phi(\bar{k}) \prod_{i=1,2} \hat{d}^4 \bar{w}_i \hat{d}^4 \bar{q} \hat{\delta}(2\bar{w}_i \cdot p_i) \hat{\delta}(2\bar{q} \cdot p_1) \hat{\delta}(2\bar{q} \cdot p_2) \right. \right. \\
&\quad \times \bar{k}^\mu e^{-ib \cdot \bar{q}} \hat{\delta}^{(4)}(\bar{w}_1 + \bar{w}_2 + \bar{k}) \\
&\quad \times \bar{\mathcal{A}}^{(0)}(p_1 p_2 \rightarrow p_1 + \hbar \bar{w}_1, p_2 + \hbar \bar{w}_2, \hbar \bar{k}) \\
&\quad \left. \left. \times \bar{\mathcal{A}}^{(0)*}(p_1 + \hbar \bar{q}, p_2 - \hbar \bar{q} \rightarrow p_1 + \hbar \bar{w}_1, p_2 + \hbar \bar{w}_2, \hbar \bar{k}) \right\rangle\right\rangle. \tag{4.36}
\end{aligned}$$

We will make use of this expression below to verify that momentum is conserved as expected.

One disadvantage of this expression for the leading order radiated momentum is that it is no longer in a form of an integral over a perfect square, such as shown in eq. (3.38). Nevertheless we can recast eq. (4.35) in such a form. To do so, perform

a change of variable, including in the wavefunctions. To begin, it is helpful to write eq. (4.35) as

$$\begin{aligned}
R_{\text{cl}}^\mu &= \sum_X \prod_{i=1,2} \int d\Phi(p_i) |\phi_i(p_i)|^2 \int d\Phi(k) d\Phi(w_i + p_i) d\Phi(q_i + p_i) \\
&\quad \times \hat{\delta}^{(4)}(w_1 + w_2 + k + r_X) \hat{\delta}^{(4)}(q_1 + q_2) e^{-ib \cdot q_1 / \hbar} k_X^\mu \\
&\quad \times \mathcal{A}(p_1, p_2 \rightarrow p_1 + w_1, p_2 + w_2, k, r_X) \\
&\quad \times \mathcal{A}^*(p_1 + q_1, p_2 + q_2 \rightarrow p_1 + w_1, p_2 + w_2, k, r_X) .
\end{aligned} \tag{4.37}$$

We will now re-order the integration and perform a change of variables. Let us define $\tilde{p}_i = p_i - \tilde{w}_i$, $\tilde{q}_i = q_i + \tilde{w}_i$, and $\tilde{w}_i = -w_i$, changing variables from p_i to \tilde{p}_i , from q_i to \tilde{q}_i , and from w_i to \tilde{w}_i ,

$$\begin{aligned}
R_{\text{cl}}^\mu &= \sum_X \prod_{i=1,2} \int d\Phi(\tilde{p}_i) d\Phi(k) d\Phi(\tilde{w}_i + \tilde{p}_i) d\Phi(\tilde{q}_i + \tilde{p}_i) |\phi_i(\tilde{p}_i + \tilde{w}_i)|^2 \\
&\quad \times \hat{\delta}^{(4)}(\tilde{w}_1 + \tilde{w}_2 - k - r_X) \hat{\delta}^{(4)}(\tilde{q}_1 + \tilde{q}_2 - k - r_X) \\
&\quad \times e^{-ib \cdot (\tilde{q}_1 - \tilde{w}_1) / \hbar} k_X^\mu \\
&\quad \times \mathcal{A}(\tilde{p}_1 + \tilde{w}_1, \tilde{p}_2 + \tilde{w}_2 \rightarrow \tilde{p}_1, \tilde{p}_2, k, r_X) \\
&\quad \times \mathcal{A}^*(\tilde{p}_1 + \tilde{q}_1, \tilde{p}_2 + \tilde{q}_2 \rightarrow \tilde{p}_1, \tilde{p}_2, k, r_X) .
\end{aligned} \tag{4.38}$$

As the \tilde{w}_i implicitly carry a factor of \hbar , just as argued in sect. 4.1 for the momentum mismatch q , we may neglect the shift in the wave functions. Dropping the tildes, and associating the w_i integrals with \mathcal{A} and the q_i integrals with \mathcal{A}^* , our expression is revealed as an integral over a perfect square,

$$\begin{aligned}
R_{\text{cl}}^\mu &= \sum_X \prod_{i=1,2} \int d\Phi(p_i) |\phi_i(p_i)|^2 \int d\Phi(k) k_X^\mu \\
&\quad \times \left| \int d\Phi(w_i + p_i) \hat{\delta}^{(4)}(w_1 + w_2 - k - r_X) \right. \\
&\quad \left. \times e^{ib \cdot w_1 / \hbar} \mathcal{A}(p_1 + w_1, p_2 + w_2 \rightarrow p_1, p_2, k, r_X) \right|^2 \\
&= \sum_X \prod_{i=1,2} \left\langle \left\langle \int d\Phi(k) k_X^\mu \left| \int d\Phi(w_i + p_i) \hat{\delta}^{(4)}(w_1 + w_2 - k - r_X) \right. \right. \right. \\
&\quad \left. \left. \left. \times e^{ib \cdot w_1 / \hbar} \mathcal{A}(p_1 + w_1, p_2 + w_2 \rightarrow p_1, p_2, k, r_X) \right| \right\rangle \right\rangle .
\end{aligned} \tag{4.39}$$

The perfect-square structure allows us to define a *radiation kernel*,

$$\begin{aligned}
\mathcal{R}(k, r_X) &\equiv \hbar^{3/2} \prod_{i=1,2} \int d\Phi(p_i + w_i) \hat{\delta}^{(4)}(w_1 + w_2 - k - r_X) \\
&\quad \times e^{ib \cdot w_1/\hbar} \mathcal{A}(p_1 + w_1, p_2 + w_2 \rightarrow p_1, p_2, k, r_X), \\
&= \hbar^{3/2} \prod_{i=1,2} \int \hat{d}^4 w_i \hat{\delta}(2p_i \cdot w_i + w_i^2) \Theta(p_i^0 + w_i^0) \hat{\delta}^{(4)}(w_1 + w_2 - k - r_X) \\
&\quad \times e^{ib \cdot w_1/\hbar} \mathcal{A}(p_1 + w_1, p_2 + w_2 \rightarrow p_1, p_2, k, r_X)
\end{aligned} \tag{4.40}$$

so that

$$R_{\text{cl}}^\mu = \sum_X \hbar^{-3} \left\langle\left\langle \int d\Phi(k) k_X^\mu |\mathcal{R}(k, r_X)|^2 \right\rangle\right\rangle. \tag{4.41}$$

The prefactor along with the normalization of \mathcal{R} are again chosen so that the classical limit of the radiation kernel will be of $\mathcal{O}(\hbar^0)$. As we will see in sect. 6.2.1, this expression is related to a classical all-order formula for the radiated momentum.

Let us now focus once more on the leading contribution, with $X = \emptyset$. As usual, rescale $w \rightarrow \hbar \bar{w}$, and as above we may drop the w^2 inside all of the on-shell delta functions. Again, remove an overall factor of g^6 and accompanying \hbar s from the amplitude and its conjugate. We choose to express the leading-order classical radiated momentum in terms of a leading-order radiation kernel,

$$\begin{aligned}
\mathcal{R}^{(0)}(\bar{k}) &\equiv \hbar^2 \prod_{i=1,2} \int \hat{d}^4 \bar{w}_i \hat{\delta}(2p_i \cdot \bar{w}_i) \hat{\delta}^{(4)}(\bar{w}_1 + \bar{w}_2 - \bar{k}) e^{ib \cdot \bar{w}_1} \\
&\quad \times \bar{\mathcal{A}}^{(0)}(p_1 + \hbar \bar{w}_1, p_2 + \hbar \bar{w}_2 \rightarrow p_1, p_2, \hbar \bar{k}),
\end{aligned} \tag{4.42}$$

so that the leading-order momentum radiated is simply,

$$R_{\text{cl}}^{\mu,(0)} = g^6 \left\langle\left\langle \int d\Phi(\bar{k}) \bar{k}^\mu |\mathcal{R}^{(0)}(\bar{k})|^2 \right\rangle\right\rangle. \tag{4.43}$$

4.5 Conservation of momentum

Conservation of momentum certainly holds to all orders, as we saw in sect. 3.5. In the classical theory, momentum conservation was however historically a controversial issue. It is thus worth making sure that we have not spoiled this critical physical property in our classical impulse discussion in sect. 4.3, or in our classical radiation discussion, sect. 4.4. One might worry, for example, that there is a subtlety with the order of limits.

There is no issue at LO and NLO for the impulse, because

$$\Delta p_1^{\mu,(0)} + \Delta p_2^{\mu,(0)} = 0, \quad \Delta p_1^{\mu,(1)} + \Delta p_2^{\mu,(1)} = 0. \tag{4.44}$$

These follow straightforwardly from the definitions, eq. (4.30) and eq. (4.33). The essential point is that the amplitudes entering into these orders in the impulse conserve momentum for four particles. At LO, for example, using eq. (4.30) the impulse on particle 2 can be written as

$$\begin{aligned} \Delta p_2^{\mu,(0)} = i \frac{g^2}{4} \left\langle\left\langle \hbar^2 \int d^4 \bar{q}_1 d^4 \bar{q}_2 \hat{\delta}(\bar{q}_1 \cdot p_1) \hat{\delta}(\bar{q}_1 \cdot p_2) \hat{\delta}^{(4)}(\bar{q}_1 + \bar{q}_2) \right. \right. \\ \left. \left. \times e^{-ib \cdot \bar{q}_1} \bar{q}_2^\mu \bar{\mathcal{A}}^{(0)}(p_1, p_2 \rightarrow p_1 + \hbar \bar{q}_1, p_2 + \hbar \bar{q}_2) \right\rangle\right\rangle. \end{aligned} \quad (4.45)$$

In this equation, conservation of momentum at the level of the four point amplitude $\bar{\mathcal{A}}^{(0)}(p_1, p_2 \rightarrow p_1 + \hbar \bar{q}_1, p_2 + \hbar \bar{q}_2)$ is expressed by the presence of the four-fold delta function $\hat{\delta}^{(4)}(\bar{q}_1 + \bar{q}_2)$. Using this delta function, we may replace \bar{q}_2^μ with $-\bar{q}_1^\mu$ and then integrate over \bar{q}_2 , once again using the delta function. The result is manifestly $-\Delta p_1^{\mu,(0)}$, eq. (4.30). A similar calculation goes through at NLO.

In this sense, the scattering is conservative at LO and at NLO. At NNLO, however, we must take radiative effects into account. This backreaction is entirely described by $I_{(2)}^\mu$. As indicated in eq. (3.42), $I_{(1)}^\mu$ is always conservative. From our perspective here, this is because it involves only four-point amplitudes. Thus to understand conservation of momentum we need to investigate $I_{(2)}^\mu$. The lowest order case in which a five point amplitude can enter $I_{(2)}^\mu$ is at NNLO. Let us restrict attention to this lowest order case, taking the additional state X to be a messenger.

Using precisely the methods of previous subsections, the lowest order term in $I_{(2)}^\mu$ involving one messenger is, in the classical regime,

$$\begin{aligned} I_{(2),\text{cl}}^{\mu,(\text{rad})} = g^6 \left\langle\left\langle \hbar^4 \int d\Phi(\bar{k}) \prod_{i=1,2} d^4 \bar{w}_i d^4 \bar{q}_1 d^4 \bar{q}_2 \hat{\delta}(2\bar{w}_i \cdot p_i) \hat{\delta}(2\bar{q}_1 \cdot p_1) \hat{\delta}(2\bar{q}_2 \cdot p_2) \right. \right. \\ \times e^{-ib \cdot \bar{q}_1} \bar{w}_1^\mu \hat{\delta}^{(4)}(\bar{w}_1 + \bar{w}_2 + \bar{k}) \hat{\delta}^{(4)}(\bar{q}_1 + \bar{q}_2) \\ \times \bar{\mathcal{A}}^{(0)}(p_1, p_2 \rightarrow p_1 + \hbar \bar{w}_1, p_2 + \hbar \bar{w}_2, \hbar \bar{k}) \\ \left. \left. \times \bar{\mathcal{A}}^{(0)*}(p_1 + \hbar \bar{q}_1, p_2 + \hbar \bar{q}_2 \rightarrow p_1 + \hbar \bar{w}_1, p_2 + \hbar \bar{w}_2, \hbar \bar{k}) \right\rangle\right\rangle. \end{aligned} \quad (4.46)$$

To see that this balances the radiated momentum, we use eq. (4.36). The structure of the expressions are almost identical; conservation of momentum holds because the factor \bar{k}^μ in eq. (4.36) is balanced by \bar{w}_1^μ in eq. (4.46) and \bar{w}_2^μ in the equivalent expression for particle 2.

Thus conservation of momentum continues to hold in our expressions once we have passed to the classical limit, at least through NNLO. At this order there is non-zero momentum radiated, so momentum conservation is non-trivial from the classical point

of view. We will see by explicit calculation in later sections that our classical impulse correctly incorporates the impulse from the ALD force in addition to the Lorentz force.

5 Examples

To build confidence in the formalism developed in prior sections, let us use it to calculate some classical point-particle observables explicitly. We will work in the context of scalar electrodynamics, with Lagrangian

$$\mathcal{L} = -\frac{1}{4}F^{\mu\nu}F_{\mu\nu} + \sum_{i=1,2} \left[(D^\mu \Phi_i)^\dagger D_\mu \Phi_i - m_i^2 \Phi_i^\dagger \Phi_i \right]. \quad (5.1)$$

We take the charges of the fields Φ_i to be Q_i , with the electromagnetic coupling the usual e .

We will begin by studying the impulse at leading and next-to-leading order. Later, in section 6.1, we will study the same quantity by iterating the classical equations of motion. The fact that this iterative classical approach to the impulse is reminiscent of Feynman diagrams was recently highlighted by Damour [31]. Following our discussion of the impulse, we will discuss the momentum radiated before turning to momentum conservation.

5.1 Leading-order electromagnetic impulse

We begin by computing the impulse, $\Delta p_1^{\mu,(0)}$, on particle 1 at leading order. At this order, only $I_{(1)}^\mu$ contributes, as expressed in eq. (4.30). To evaluate the impulse, we must first compute the $2 \rightarrow 2$ tree-level scattering amplitude. The reduced amplitude $\bar{\mathcal{A}}^{(0)}$ is,

$$i\bar{\mathcal{A}}^{(0)}(p_1 p_2 \rightarrow p_1 + \hbar\bar{q}, p_2 - \hbar\bar{q}) = \begin{array}{c} p_1 \quad p_1 + \hbar\bar{q} \\ \swarrow \quad \searrow \\ \text{---} \text{---} \text{---} \\ \nwarrow \quad \nearrow \\ p_2 \quad p_2 - \hbar\bar{q} \end{array} = iQ_1 Q_2 \frac{4p_1 \cdot p_2 + \hbar^2 \bar{q}^2}{\hbar^2 \bar{q}^2}. \quad (5.2)$$

We can neglect the second term in the numerator, which is subleading in the classical limit.

Substituting this expression into eq. (4.30), we obtain,

$$\Delta p_1^{\mu,(0)} = ie^2 Q_1 Q_2 \left\langle\left\langle \int \hat{d}^4\bar{q} \hat{\delta}(\bar{q} \cdot p_1) \hat{\delta}(\bar{q} \cdot p_2) e^{-ib \cdot \bar{q}} \frac{p_1 \cdot p_2}{\bar{q}^2} \bar{q}^\mu \right\rangle\right\rangle. \quad (5.3)$$

As promised, the leading-order expression is independent of \hbar . Evaluating the $p_{1,2}$ integrals, in the process applying the simplifications explained in sect. 4.1, namely replacing $p_i \rightarrow m_i u_i$, we find that,

$$\Delta p_1^{\mu,(0)} = ie^2 Q_1 Q_2 \int \hat{d}^4 \bar{q} \hat{\delta}(\bar{q} \cdot u_1) \hat{\delta}(\bar{q} \cdot u_2) e^{-ib \cdot \bar{q}} \frac{u_1 \cdot u_2}{\bar{q}^2} \bar{q}^\mu. \quad (5.4)$$

This expression has intriguing similarities to quantities that arise in the high-energy limit of two-body scattering [59–65]. The eikonal approximation used there is known to exponentiate, and it would be interesting to explore this connection further.

It is straightforward to perform the integral over \bar{q} in eq. (5.4) to obtain an explicit expression for the leading order impulse. To do so, we work in the rest frame of particle 1, so that $u_1 = (1, 0, 0, 0)$. Without loss of generality we can orientate the spatial coordinates in this frame so that particle 2 is moving along the z axis, with proper velocity $u_2 = (\gamma, 0, 0, \gamma\beta)$. We have introduced the standard Lorentz gamma factor $\gamma = u_1 \cdot u_2$ and the velocity parameter β satisfying $\gamma^2(1 - \beta^2) = 1$. In terms of these variables, the impulse is

$$\begin{aligned} \Delta p_1^{\mu,(0)} &= ie^2 Q_1 Q_2 \int \hat{d}^4 \bar{q} \hat{\delta}(\bar{q}^0) \hat{\delta}(\gamma \bar{q}^0 - \gamma\beta \bar{q}^3) e^{-ib \cdot \bar{q}} \frac{\gamma}{\bar{q}^2} \bar{q}^\mu \\ &= -i \frac{e^2 Q_1 Q_2}{4\pi^2 |\beta|} \int d^2 \bar{q}_\perp e^{ib \cdot \bar{q}_\perp} \frac{1}{\bar{q}_\perp^2} \bar{q}^\mu, \end{aligned} \quad (5.5)$$

where $\bar{q}^0 = \bar{q}^3 = 0$ and the non-vanishing components of \bar{q}^μ in the xy plane of our coordinate system are \bar{q}_\perp . It remains to perform the two dimensional integral over \bar{q}_\perp , which is easily done using polar coordinates. Let the magnitude of \bar{q}_\perp be χ and orient the x and y axes so that $\mathbf{b} \cdot \bar{q}_\perp = |\mathbf{b}| \chi \cos \theta$. Then the non-vanishing components of \bar{q}^μ are $\bar{q}^\mu = (0, \chi \cos \theta, \chi \sin \theta, 0)$ and the impulse is

$$\begin{aligned} \Delta p_1^{\mu,(0)} &= -i \frac{e^2 Q_1 Q_2}{4\pi^2 |\beta|} \int_0^\infty d\chi \chi \int_{-\pi}^\pi d\theta e^{i|\mathbf{b}| \chi \cos \theta} \frac{1}{\chi^2} (0, \chi \cos \theta, \chi \sin \theta, 0) \\ &= -i \frac{e^2 Q_1 Q_2}{4\pi^2 |\beta|} \int_0^\infty d\chi \int_{-\pi}^\pi d\theta e^{i|\mathbf{b}| \chi \cos \theta} (0, \cos \theta, \sin \theta, 0) \\ &= \frac{e^2 Q_1 Q_2}{2\pi |\beta|} \int_0^\infty d\chi J_1(|\mathbf{b}| \chi) \hat{\mathbf{b}} \\ &= \frac{e^2 Q_1 Q_2}{2\pi |\beta|} \frac{\hat{\mathbf{b}}}{|\mathbf{b}|}, \end{aligned} \quad (5.6)$$

where $\hat{\mathbf{b}}$ is the spatial unit vector in the direction of the impact parameter. To restore manifest Lorentz invariance, note that

$$\frac{1}{|\beta|} = \frac{\gamma}{\sqrt{\gamma^2 - 1}}, \quad \frac{\hat{\mathbf{b}}}{|\mathbf{b}|} = -\frac{b^\mu}{b^2}. \quad (5.7)$$

(Recall that b^μ is spacelike, so $-b^2 > 0$.) With this input, we may write the impulse as,

$$\Delta p_1^{\mu,(0)} = -\frac{e^2 Q_1 Q_2}{2\pi} \frac{\gamma}{\sqrt{\gamma^2 - 1}} \frac{b^\mu}{b^2}. \quad (5.8)$$

In the non-relativistic limit this should match a familiar formula: the expansion of the Rutherford scattering angle $\theta(b)$ as a function of the impact parameter. To keep things simple, we consider Rutherford scattering of a light particle (for example, an electron) off a heavy particle (a nucleus). Taking particle 1 to be the moving light particle, particle 2 is very heavy and we work in its rest frame. Expanding the textbook Rutherford result to order e^2 , we find

$$\theta(b) = 2 \tan^{-1} \frac{e^2 Q_1 Q_2}{4\pi m v^2 b} \simeq \frac{e^2 Q_1 Q_2}{2\pi m v^2 b}, \quad (5.9)$$

where v is the non-relativistic velocity of the particle. To recover this simple result from equation (5.4), recall that in the non-relativistic limit $\gamma \simeq 1 + v^2/2$. The scattering angle, at this order, is simply $\Delta v/v$. We will make use of this frame in later sections as well.

We note in passing that the second term in the numerator of eq. (5.2) is a quantum correction. It will ultimately be suppressed by ℓ_c^2/b^2 , and in addition would contribute only a contact interaction, as it leads to a $\delta^{(2)}(b)$ term in the impulse.

5.2 Next-to-leading order impulse

At the next order in perturbation theory, order e^4 , a well-defined classical impulse is only obtained by combining all terms in the impulse $\langle \Delta p_1^\mu \rangle$ of order e^4 . As we discussed in sect. 4.3, both $I_{(1)}^\mu$ and $I_{(2)}^\mu$ contribute. We found in eq. (4.33) that the impulse is a simple integral over an impulse kernel $\mathcal{I}_{\text{cl}}^{\mu,(1)}$, defined in eq. (4.34), which has a well-defined classical limit.

The determination of the impulse kernel at this order requires us to compute the four-point one-loop amplitude along with a cut amplitude, that is an integral over a term quadratic in the tree amplitude. As the one-loop amplitude in electrodynamics is simple, we compute it explicitly using on-shell renormalised perturbation theory in Feynman gauge.

The contributions to the impulse in the quantum theory can be divided into three classes, according to the prefactor in the charges they carry: C_1 , those proportional to $Q_1^3 Q_2$; C_2 , those to $Q_1^2 Q_2^2$; and C_3 , those to $Q_1 Q_2^3$. The first class can be further subdivided into C_{1a} , terms which would be proportional to $Q_1(Q_1^2 + n_s Q_3^2)Q_2$ were we to add n_s species of a third scalar with charge Q_3 , and into C_{1b} , terms which would retain the simple $Q_1^3 Q_2$ prefactor. Likewise, the last class can be further subdivided

scalars of mass m and charge Q_i . Define the self-energy via,

$$Q_i^2 \Pi(q^2) (q^2 \eta^{\mu\nu} - q^\mu q^\nu) \equiv \text{diagram 1} + \text{diagram 2} + \text{diagram 3}, \quad (5.11)$$

where we have made the projector required by gauge invariance manifest, but have not included factors of the electromagnetic coupling e . We have extracted the charges Q_i for later convenience. The contribution of the photon self-energy to the reduced four-point amplitude is

$$\bar{\mathcal{A}}_\Pi = Q_1 Q_2 Q_i^2 \frac{(2p_1 + \hbar \bar{q}) \cdot (2p_2 - \hbar \bar{q})}{\hbar^2 \bar{q}^2} \Pi(\hbar^2 \bar{q}^2). \quad (5.12)$$

The counterterm is adjusted to impose the renormalisation condition that $\Pi(0) = 0$, required in order to match the identification of the electromagnetic coupling e with its classical counterpart. As a power series in the dimensionless ratio $q^2/m^2 = \hbar^2 \bar{q}^2/m^2$, which is of order ℓ_c^2/b^2 ,

$$\Pi(q^2) = \hbar^2 \Pi'(0) \frac{\bar{q}^2}{m^2} + \mathcal{O}\left(\frac{\ell_c^4}{b^4}\right). \quad (5.13)$$

The renormalization condition is essential in eliminating possible contributions of $\mathcal{O}(\hbar^0)$. One way to see that $\bar{\mathcal{A}}_\Pi$ is a purely quantum correction is to follow the powers of \hbar . As $\Pi(q^2)$ is of order \hbar^2 , $\bar{\mathcal{A}}_\Pi$ is of order \hbar^0 . This gives a contribution of $\mathcal{O}(\hbar)$ to the impulse kernel (4.34), which in turn gives a contribution of $\mathcal{O}(\hbar)$ to the impulse, as can be seen in eq. (4.33).

Alternatively, one can consider the contribution of these graphs to $\Delta p/p$. Counting each factor of \bar{q} as of order b , and using $\Pi(q^2) \sim \ell_c^2/b^2$, it is easy to see that these self-energy graphs yield a contribution to $\Delta p/p$ of order $\alpha^2 \hbar^3/(mb)^3 \sim (\rho_{cl}^2/b^2) (\ell_c/b)$.

The renormalisation of the vertex is similarly a purely quantum effect.

5.2.2 Triangles

We turn next to contributions which do survive in the classical limit. Let us first examine the two triangle diagrams in eq. (5.10). They are related by swapping particles 1 and 2. The first diagram is,

$$iT_{12} = \text{diagram} = -2Q_1^2 Q_2^2 \int \hat{d}^D \ell \frac{(2p_1 + \ell) \cdot (2p_1 + q + \ell)}{\ell^2 (\ell - q)^2 (2p_1 \cdot \ell + \ell^2 + i\epsilon)}. \quad (5.14)$$

In this integral, we use a dimensional regulator in a standard way ($D = 4 - 2\epsilon$) in order to regulate potential divergences. We have retained an explicit $i\epsilon$ in the massive scalar propagator, because it will play an important role below.

To extract the classical contribution of this integral to the amplitude, we recall from sect. 4.1 that we should set $q = \hbar\bar{q}$ and $\ell = \hbar\bar{\ell}$, and therefore that the components of q and ℓ are all small compared to m . Consequently, the triangle simplifies to,

$$T_{12} = \frac{4iQ_1^2 Q_2^2 m_1^2}{\hbar} \int \hat{d}^4 \bar{\ell} \frac{1}{\bar{\ell}^2 (\bar{\ell} - \bar{q})^2 (p_1 \cdot \bar{\ell} + i\epsilon)}. \quad (5.15)$$

Here, we have taken the limit $D \rightarrow 4$, as the integral is now free of divergences. Notice that we have exposed one additional inverse power of \hbar . Comparing to the definition of $\mathcal{I}_{\text{cl}}^{\mu,(1)}$ in eq. (4.34), we see that this inverse power of \hbar will cancel against the explicit factor of \hbar in $I_{(1),\text{cl}}^{\mu,(1)}$, signaling a classical contribution to the impulse.

At this point we employ a simple trick which simplifies the loop integral appearing in eq. (5.15), and which will be of great help in simplifying the more complicated box topologies below. The on-shell condition for the outgoing particle 1 requires that $p_1 \cdot \bar{q} = -\hbar\bar{q}^2/2$, so replace $\bar{\ell} \rightarrow \bar{\ell}' = \bar{q} - \bar{\ell}$ in T_{12} :

$$\begin{aligned} T_{12} &= -\frac{4iQ_1^2 Q_2^2 m_1^2}{\hbar} \int \hat{d}^4 \bar{\ell}' \frac{1}{\bar{\ell}'^2 (\bar{\ell}' - \bar{q})^2 (p_1 \cdot \bar{\ell}' + \hbar\bar{q}^2 - i\epsilon)} \\ &= -\frac{4iQ_1^2 Q_2^2 m_1^2}{\hbar} \int \hat{d}^4 \bar{\ell}' \frac{1}{\bar{\ell}'^2 (\bar{\ell}' - \bar{q})^2 (p_1 \cdot \bar{\ell}' - i\epsilon)} + \mathcal{O}(\hbar^0), \end{aligned} \quad (5.16)$$

Because of the linear power of \hbar appearing in eq. (4.34), the second term is in fact a quantum correction. We therefore neglect it, and write,

$$T_{12} = -\frac{4iQ_1^2 Q_2^2 m_1^2}{\hbar} \int \hat{d}^4 \bar{\ell} \frac{1}{\bar{\ell}^2 (\bar{\ell} - \bar{q})^2 (p_1 \cdot \bar{\ell} - i\epsilon)}, \quad (5.17)$$

where we have dropped the prime on the loop momentum: $\ell' \rightarrow \ell$. Comparing with our previous expression, eq. (5.15), for the triangle, the net result of these replacements has simply been to introduce an overall sign while, crucially, also switching the sign of the $i\epsilon$ term. Symmetrising over the two expressions for T_{12} , we learn that

$$T_{12} = \frac{2Q_1^2 Q_2^2 m_1^2}{\hbar} \int \hat{d}^4 \bar{\ell} \frac{\hat{\delta}(p_1 \cdot \bar{\ell})}{\bar{\ell}^2 (\bar{\ell} - \bar{q})^2}, \quad (5.18)$$

using the identity

$$\frac{1}{x - i\epsilon} - \frac{1}{x + i\epsilon} = i\hat{\delta}(x). \quad (5.19)$$

The second triangle contributing to the amplitude, T_{21} , can be obtained from T_{12} simply by interchanging the labels 1 and 2:

$$T_{21} = \frac{2Q_1^2 Q_2^2 m_2^2}{\hbar} \int \hat{d}^4 \bar{\ell} \frac{\hat{\delta}(p_2 \cdot \bar{\ell})}{\bar{\ell}^2 (\bar{\ell} - \bar{q})^2}. \quad (5.20)$$

These triangles contribute to the impulse kernel via

$$\begin{aligned} \mathcal{I}_{\text{cl}}^{\mu(1)} \Big|_{\text{triangle}} &= \hbar \bar{q}^\mu (T_{12} + T_{21}) \\ &= 2Q_1^2 Q_2^2 \bar{q}^\mu \int \frac{\hat{d}^4 \bar{\ell}}{\bar{\ell}^2 (\bar{\ell} - \bar{q})^2} \left(m_1^2 \hat{\delta}(p_1 \cdot \bar{\ell}) + m_2^2 \hat{\delta}(p_2 \cdot \bar{\ell}) \right). \end{aligned} \quad (5.21)$$

Recall that we must integrate over the wavefunctions in order to obtain the classical impulse from the impulse kernel. As we have discussed in sect. 4.1, because the inverse power of \hbar here is canceled by the linear power present explicitly in eq. (4.33), we may evaluate the wavefunction integrals by replacing the p_i by their classical values $m_i u_i$. The result for the contribution to the kernel is,

$$\mathcal{I}_1^\mu \equiv 2Q_1^2 Q_2^2 \bar{q}^\mu \int \hat{d}^4 \bar{\ell} \frac{1}{\bar{\ell}^2 (\bar{\ell} - \bar{q})^2} \left(m_1 \hat{\delta}(u_1 \cdot \bar{\ell}) + m_2 \hat{\delta}(u_2 \cdot \bar{\ell}) \right). \quad (5.22)$$

One must still integrate this expression over \bar{q} as in eq. (4.33) to obtain the contribution to the impulse.

5.2.3 Boxes

The one-loop amplitude also includes boxes, crossed boxes, and the NLO contribution to the impulse includes as well a term quadratic in the tree amplitude which we can think of as the cut of a one-loop box. Because of the power of \hbar in front of the first term in eq. (4.34), we need to extract the contributions of all of these quantities at order $1/\hbar$. However, as we will see, each individual diagram also contains singular terms of order $1/\hbar^2$. We might fear that these terms pose an obstruction to the very existence of a classical limit of the observable in which we are interested. As we will see, this fear is misplaced, as these singular terms cancel completely, leaving a well-defined classical result. It is straightforward to evaluate the individual contributions, but making the

Similarly, the crossed box is

$$\begin{aligned}
iC &= \text{Diagram} \\
&= Q_1^2 Q_2^2 \int \hat{d}^D \ell \frac{(2p_1 + \ell) \cdot (2p_2 - 2q + \ell)(2p_1 + q + \ell) \cdot (2p_2 - q + \ell)}{\ell^2 (\ell - q)^2 (2p_1 \cdot \ell + \ell^2 + i\epsilon) (2p_2 \cdot (\ell - q) + (\ell - q)^2 + i\epsilon)} \\
&= \frac{Q_1^2 Q_2^2}{\hbar^{2+2\epsilon}} \int \hat{d}^D \bar{\ell} \frac{(2p_1 + \hbar \bar{\ell}) \cdot (2p_2 - 2\hbar \bar{q} + \hbar \bar{\ell}) (2p_1 + \hbar \bar{q} + \hbar \bar{\ell}) \cdot (2p_2 - \hbar \bar{q} + \hbar \bar{\ell})}{\bar{\ell}^2 (\bar{\ell} - \bar{q})^2 (2p_1 \cdot \bar{\ell} + \hbar \bar{\ell}^2 + i\epsilon) (2p_2 \cdot (\bar{\ell} - \bar{q}) + \hbar (\bar{\ell} - \bar{q})^2 + i\epsilon)}. \tag{5.25}
\end{aligned}$$

Using the on-shell conditions to simplify $p_i \cdot \bar{q}$ terms in the denominator and numerator, and once again expanding in powers of \hbar , truncating after order $1/\hbar$, and separating different orders in \hbar , we find,

$$\begin{aligned}
C &= C_{-1} + C_0, \\
C_{-1} &= -\frac{4iQ_1^2 Q_2^2}{\hbar^{2+2\epsilon}} (p_1 \cdot p_2)^2 \int \frac{\hat{d}^D \bar{\ell}}{\bar{\ell}^2 (\bar{\ell} - \bar{q})^2} \frac{1}{(p_1 \cdot \bar{\ell} + i\epsilon)(p_2 \cdot \bar{\ell} + i\epsilon)} \\
C_0 &= -\frac{2iQ_1^2 Q_2^2}{\hbar^{1+2\epsilon}} p_1 \cdot p_2 \int \frac{\hat{d}^D \bar{\ell}}{\bar{\ell}^2 (\bar{\ell} - \bar{q})^2 (p_1 \cdot \bar{\ell} + i\epsilon)(p_2 \cdot \bar{\ell} + i\epsilon)} \\
&\quad \times \left[2(p_1 + p_2) \cdot \bar{\ell} - \frac{(p_1 \cdot p_2) \bar{\ell}^2}{(p_1 \cdot \bar{\ell} + i\epsilon)} - \frac{(p_1 \cdot p_2) [(\bar{\ell} - \bar{q})^2 - \bar{q}^2]}{(p_2 \cdot \bar{\ell} + i\epsilon)} \right]. \tag{5.26}
\end{aligned}$$

Comparing the expressions for the $\mathcal{O}(1/\hbar^2)$ terms in the box and the crossed box, B_{-1} and C_{-1} respectively, we see that there is only a partial cancellation of the singular, $\mathcal{O}(1/\hbar^2)$, term in the reduced amplitude $\bar{\mathcal{A}}^{(1)}$. The impulse kernel, eq. (4.34), does contain another term, which is quadratic in the tree-level reduced amplitude $\bar{\mathcal{A}}^{(0)}$. We will see below that taking this additional contribution into account leads to a complete cancellation of the singular term; but the classical limit does not exist for each of these terms separately.

5.2.4 Cut Box

In order to see the cancellation of the singular term we must incorporate the term in the impulse kernel which is quadratic in tree amplitudes. This contribution can be viewed as proportional to the cut of the one-loop box, weighted by the loop momentum

$\hbar\bar{w}^\mu$:

$$\mathbb{B}^\mu = -i\hbar^2 \int \hat{d}^4\bar{w} \bar{w}^\mu \hat{\delta}(2p_1 \cdot \bar{w} + \hbar\bar{w}^2) \hat{\delta}(2p_2 \cdot \bar{w} - \hbar\bar{w}^2) \times \text{diagram}, \quad (5.27)$$

where an additional factor of \hbar in the second term of eq. (4.34) will be multiplied into eq. (5.32) below, as it parallels the factor in the first term of eq. (4.34). Evaluating the Feynman diagrams, we obtain,

$$\begin{aligned} \mathbb{B}^\mu &= -i \frac{Q_1^2 Q_2^2}{\hbar^2} \int \hat{d}^4\bar{w} \hat{\delta}(2p_1 \cdot \bar{w} + \hbar\bar{w}^2) \hat{\delta}(2p_2 \cdot \bar{w} - \hbar\bar{w}^2) \frac{\bar{w}^\mu}{\bar{w}^2 (\bar{w} - \bar{q})^2} \\ &\quad \times (2p_1 + \hbar\bar{w}) \cdot (2p_2 - \bar{w}h) (2p_1 + \hbar\bar{q} + \hbar\bar{w}) \cdot (2p_2 - \hbar\bar{q} - \hbar\bar{w}). \end{aligned} \quad (5.28)$$

As in the previous subsection, expand in \hbar , and truncate after order $1/\hbar$, so that,

$$\begin{aligned} \mathbb{B}^\mu &= \mathbb{B}_{-1}^\mu + \mathbb{B}_0^\mu, \\ \mathbb{B}_{-1}^\mu &= -\frac{4iQ_1^2 Q_2^2}{\hbar^2} (p_1 \cdot p_2)^2 \int \frac{\hat{d}^4\bar{\ell} \bar{\ell}^\mu}{\bar{\ell}^2 (\bar{\ell} - \bar{q})^2} \hat{\delta}(p_1 \cdot \bar{\ell}) \hat{\delta}(p_2 \cdot \bar{\ell}), \\ \mathbb{B}_0^\mu &= -\frac{2iQ_1^2 Q_2^2}{\hbar} (p_1 \cdot p_2)^2 \int \frac{\hat{d}^4\bar{\ell} \bar{\ell}^\mu}{\bar{\ell}^2 (\bar{\ell} - \bar{q})^2} \bar{\ell}^2 (\hat{\delta}'(p_1 \cdot \bar{\ell}) \hat{\delta}(p_2 \cdot \bar{\ell}) - \hat{\delta}(p_1 \cdot \bar{\ell}) \hat{\delta}'(p_2 \cdot \bar{\ell})). \end{aligned} \quad (5.29)$$

We have relabeled $\bar{w} \rightarrow \bar{\ell}$ in order to line up terms more transparently with corresponding ones in the box and crossed box contributions.

5.2.5 Combining Contributions

We are now in a position to assemble the elements computed in the three previous subsections in order to obtain the NLO contributions to the impulse kernel $\mathcal{I}_{\text{cl}}^{\mu,(1)}$, and thence the NLO contributions to the impulse using eq. (4.33). Let us begin by examining the singular terms. We must combine the terms from the box, crossed box, and cut box.

We can simplify the cut-box contribution \mathbb{B}_{-1}^μ by exploiting the linear change of

variable $\bar{\ell}' = \bar{q} - \bar{\ell}$,

$$\begin{aligned}
\mathbb{B}_{-1}^\mu &= -\frac{4iQ_1^2Q_2^2}{\hbar^2}(p_1 \cdot p_2)^2 \int \hat{d}^4\bar{\ell}' \frac{(\bar{q}^\mu - \bar{\ell}'^\mu)}{\bar{\ell}'^2(\bar{\ell}' - \bar{q})^2} \hat{\delta}(p_1 \cdot \bar{\ell}' - p_1 \cdot \bar{q}) \hat{\delta}(p_2 \cdot \bar{\ell}' - p_2 \cdot \bar{q}) \\
&= -\frac{4iQ_1^2Q_2^2}{\hbar^2}(p_1 \cdot p_2)^2 \int \hat{d}^4\bar{\ell}' \frac{(\bar{q}^\mu - \bar{\ell}'^\mu)}{\bar{\ell}'^2(\bar{\ell}' - \bar{q})^2} \hat{\delta}(p_1 \cdot \bar{\ell}' + \hbar\bar{q}^2/2) \hat{\delta}(p_2 \cdot \bar{\ell}' - \hbar\bar{q}^2/2) \quad (5.30) \\
&= -\frac{2iQ_1^2Q_2^2}{\hbar^2}(p_1 \cdot p_2)^2 \bar{q}^\mu \int \hat{d}^4\bar{\ell} \frac{\hat{\delta}(p_1 \cdot \bar{\ell}) \hat{\delta}(p_2 \cdot \bar{\ell})}{\bar{\ell}^2(\bar{\ell} - \bar{q})^2} + \mathcal{O}(1/\hbar),
\end{aligned}$$

where we have used the on-shell conditions to replace $p_1 \cdot \bar{q} \rightarrow -\hbar\bar{q}^2/2$ and $p_2 \cdot \bar{q} \rightarrow \hbar\bar{q}^2/2$, and where the last line arises from averaging over the two equivalent expressions for \mathbb{B}_{-1}^μ .

We may similarly simplify the singular terms from the box and cross box. Indeed, using the identity (5.19) followed by the linear change of variable we have,

$$\begin{aligned}
B_{-1} + C_{-1} &= -\frac{4Q_1^2Q_2^2}{\hbar^{2+2\epsilon}}(p_1 \cdot p_2)^2 \int \frac{\hat{d}^D\bar{\ell}}{\bar{\ell}^2(\bar{\ell} - \bar{q})^2} \frac{1}{(p_1 \cdot \bar{\ell} + i\epsilon)} \hat{\delta}(p_2 \cdot \bar{\ell}) \\
&= \frac{4Q_1^2Q_2^2}{\hbar^{2+2\epsilon}}(p_1 \cdot p_2)^2 \int \frac{\hat{d}^D\bar{\ell}'}{\bar{\ell}'^2(\bar{\ell}' - \bar{q})^2} \frac{1}{(p_1 \cdot \bar{\ell}' + \hbar\bar{q}^2/2 - i\epsilon)} \hat{\delta}(p_2 \cdot \bar{\ell}' - \hbar\bar{q}^2/2) \\
&= \frac{2iQ_1^2Q_2^2}{\hbar^2}(p_1 \cdot p_2)^2 \int \frac{\hat{d}^4\bar{\ell} \hat{\delta}(p_1 \cdot \bar{\ell}) \hat{\delta}(p_2 \cdot \bar{\ell})}{\bar{\ell}^2(\bar{\ell} - \bar{q})^2} + \mathcal{O}(1/\hbar) \quad (5.31)
\end{aligned}$$

where we have averaged over equivalent forms, and then used eq. (5.19) a second time in obtaining the last line. At the very end, we took $D \rightarrow 4$.

Combining eqs. (5.30) and (5.31), we find that the potentially singular contributions to the impulse kernel in the classical limit are,

$$\begin{aligned}
\mathcal{I}_{\text{cl}}^{\mu,(1)} \Big|_{\text{singular}} &= \hbar\bar{q}^\mu(B_{-1} + C_{-1}) + \hbar\mathbb{B}_{-1}^\mu \\
&= \frac{2iQ_1^2Q_2^2}{\hbar}(p_1 \cdot p_2)^2 \bar{q}^\mu \left[\int \frac{\hat{d}^4\bar{\ell} \hat{\delta}(p_1 \cdot \bar{\ell}) \hat{\delta}(p_2 \cdot \bar{\ell})}{\bar{\ell}^2(\bar{\ell} - \bar{q})^2} - \int \hat{d}^4\bar{\ell} \frac{\hat{\delta}(p_1 \cdot \bar{\ell}) \hat{\delta}(p_2 \cdot \bar{\ell})}{\bar{\ell}^2(\bar{\ell} - \bar{q})^2} \right] + \mathcal{O}(\hbar^0) \\
&= \mathcal{O}(\hbar^0). \quad (5.32)
\end{aligned}$$

The dangerous terms cancel, leaving only well-defined contributions.

It remains to extract the $\mathcal{O}(1/\hbar)$ terms from the box, crossed box, and cut box contributions, and to combine them with the triangles (5.22), which are of this order. In addition to B_0 from eq. (5.24), C_0 from eq. (5.26), and \mathbb{B}_0^μ from eq. (5.29), we must also include the $\mathcal{O}(1/\hbar)$ terms left implicit in eqs. (5.30) and (5.31). In the former contributions, we can now set $p_{1,2} \cdot \bar{q} = 0$, as the \hbar terms in the on-shell delta functions

would give rise to contributions of $\mathcal{O}(\hbar^0)$ to the impulse kernel, which in turn will give contributions of $\mathcal{O}(\hbar)$ to the impulse. In combining all these terms, we make use of summing over an expression and the expression after the linear change of variables; the identity (5.19); and the identity,

$$\hat{\delta}'(x) = \frac{i}{(x - i\epsilon)^2} - \frac{i}{(x + i\epsilon)^2}. \quad (5.33)$$

We find that,

$$\begin{aligned} & \hbar \bar{q}^\mu (B_0 + C_0) + [\hbar \bar{q}^\mu (B_{-1} + C_{-1})] \Big|_{\mathcal{O}(\hbar^0)} = \\ & 2Q_1^2 Q_2^2 (p_1 \cdot p_2)^2 \bar{q}^\mu \\ & \quad \times \int \frac{d^4 \bar{\ell}}{\bar{\ell}^2 (\bar{\ell} - \bar{q})^2} \left(\hat{\delta}(p_2 \cdot \bar{\ell}) \frac{\bar{\ell} \cdot (\bar{\ell} - \bar{q})}{(p_1 \cdot \bar{\ell} + i\epsilon)^2} + \hat{\delta}(p_1 \cdot \bar{\ell}) \frac{\bar{\ell} \cdot (\bar{\ell} - \bar{q})}{(p_2 \cdot \bar{\ell} - i\epsilon)^2} \right) + Z^\mu, \\ & \hbar \mathcal{B}_0^\mu + [\hbar \mathcal{B}_{-1}^\mu] \Big|_{\mathcal{O}(\hbar^0)} = \\ & -2iQ_1^2 Q_2^2 (p_1 \cdot p_2)^2 \\ & \quad \times \int \frac{d^4 \bar{\ell}}{\bar{\ell}^2 (\bar{\ell} - \bar{q})^2} \bar{\ell}^\mu \bar{\ell} \cdot (\bar{\ell} - \bar{q}) (\hat{\delta}'(p_1 \cdot \bar{\ell}) \hat{\delta}(p_2 \cdot \bar{\ell}) - \hat{\delta}'(p_2 \cdot \bar{\ell}) \hat{\delta}(p_1 \cdot \bar{\ell})) - Z^\mu, \end{aligned} \quad (5.34)$$

where we have now taken $D \rightarrow 4$, and where the quantity Z^μ is,

$$\begin{aligned} Z^\mu &= iQ_1^2 Q_2^2 (p_1 \cdot p_2)^2 \bar{q}^\mu \\ & \quad \times \int \frac{d^4 \bar{\ell}}{\bar{\ell}^2 (\bar{\ell} - \bar{q})^2} (2\bar{\ell} \cdot \bar{q} - \bar{\ell}^2) (\hat{\delta}'(p_1 \cdot \bar{\ell}) \hat{\delta}(p_2 \cdot \bar{\ell}) - \hat{\delta}'(p_2 \cdot \bar{\ell}) \hat{\delta}(p_1 \cdot \bar{\ell})). \end{aligned} \quad (5.35)$$

Finally, we integrate over the external wavefunctions. The possible singularity in \hbar has canceled, so as discussed in sect. 4.1, we perform the integrals by replacing the momenta p_i with their classical values $m_i u_i$, so that the box-derived contribution is,

$$\begin{aligned} \mathcal{I}_2^\mu &\equiv 2Q_1^2 Q_2^2 \gamma^2 \bar{q}^\mu \\ & \quad \times \int \frac{d^4 \bar{\ell}}{\bar{\ell}^2 (\bar{\ell} - \bar{q})^2} \left(m_2 \hat{\delta}(u_2 \cdot \bar{\ell}) \frac{\bar{\ell} \cdot (\bar{\ell} - \bar{q})}{(u_1 \cdot \bar{\ell} + i\epsilon)^2} + m_1 \hat{\delta}(u_1 \cdot \bar{\ell}) \frac{\bar{\ell} \cdot (\bar{\ell} - \bar{q})}{(u_2 \cdot \bar{\ell} - i\epsilon)^2} \right), \end{aligned} \quad (5.36)$$

while that from the cut box is,

$$\mathcal{I}_3^\mu \equiv -2iQ_1^2 Q_2^2 \gamma^2 \int \frac{d^4 \bar{\ell}}{\bar{\ell}^2 (\bar{\ell} - \bar{q})^2} \bar{\ell}^\mu \bar{\ell} \cdot (\bar{\ell} - \bar{q}) (m_2 \hat{\delta}'(u_1 \cdot \bar{\ell}) \hat{\delta}(u_2 \cdot \bar{\ell}) - m_1 \hat{\delta}'(u_2 \cdot \bar{\ell}) \hat{\delta}(u_1 \cdot \bar{\ell})). \quad (5.37)$$

In both contributions, we have dropped the Z^μ term which cancels between the two. The full impulse kernel is given by the sum $\mathcal{I}_1^\mu + \mathcal{I}_2^\mu + \mathcal{I}_3^\mu$, and the impulse by,

$$\begin{aligned}
\Delta p_1^{\mu,(1)} &= \frac{ie^4}{4} \hbar \int \hat{d}^4 \bar{q} \hat{\delta}(\bar{q} \cdot u_1) \hat{\delta}(\bar{q} \cdot u_2) e^{-i\bar{q} \cdot b} \mathcal{I}_{\text{cl}}^{\mu,(1)} \\
&= \frac{ie^4}{4} \hbar \int \hat{d}^4 \bar{q} \hat{\delta}(\bar{q} \cdot u_1) \hat{\delta}(\bar{q} \cdot u_2) e^{-i\bar{q} \cdot b} (\mathcal{I}_1^\mu + \mathcal{I}_2^\mu + \mathcal{I}_3^\mu) \\
&= \frac{iQ_1^2 Q_2^2 e^4}{2} \int \frac{\hat{d}^4 \bar{\ell}}{\bar{\ell}^2 (\bar{\ell} - \bar{q})^2} \hat{d}^4 \bar{q} \hat{\delta}(\bar{q} \cdot u_1) \hat{\delta}(\bar{q} \cdot u_2) e^{-i\bar{q} \cdot b} \\
&\quad \times \left[\bar{q}^\mu \left(\frac{\hat{\delta}(u_1 \cdot \bar{\ell})}{m_2} + \frac{\hat{\delta}(u_2 \cdot \bar{\ell})}{m_1} \right) \right. \\
&\quad \left. + \gamma^2 \bar{q}^\mu \left(\frac{\hat{\delta}(u_2 \cdot \bar{\ell})}{m_1} \frac{\bar{\ell} \cdot (\bar{\ell} - \bar{q})}{(u_1 \cdot \bar{\ell} + i\epsilon)^2} + \frac{\hat{\delta}(u_1 \cdot \bar{\ell})}{m_2} \frac{\bar{\ell} \cdot (\bar{\ell} - \bar{q})}{(u_2 \cdot \bar{\ell} - i\epsilon)^2} \right) \right. \\
&\quad \left. - i\gamma^2 \bar{\ell}^\mu \bar{\ell} \cdot (\bar{\ell} - \bar{q}) \left(\frac{\hat{\delta}'(u_1 \cdot \bar{\ell}) \hat{\delta}(u_2 \cdot \bar{\ell})}{m_1} - \frac{\hat{\delta}'(u_2 \cdot \bar{\ell}) \hat{\delta}(u_1 \cdot \bar{\ell})}{m_2} \right) \right]. \tag{5.38}
\end{aligned}$$

5.2.6 On-Shell Cross Check

As we have seen, careful inclusion of boxes, crossed boxes as well as cut boxes are necessary to determine the impulse in the classical regime. This may seem to be at odds with other work on the classical limit of amplitudes, which often emphasises the particular importance of triangle diagrams to the classical potential at next to leading order. However, in the context of the potential, the partial cancellation between boxes and crossed boxes is well-understood [25], and it is because of this fact that triangle diagrams are particularly important. The residual phase is known to exponentiate so that it does not effect classical physics. Meanwhile, the relevance of the subtraction of iterated (cut) diagrams has been discussed in [15, 27, 66].

Nevertheless in the case of the impulse it may seem that the various boxes play a more significant role, as they certainly contribute to the classical result for the impulse. In fact, it is easy to see that these terms must be included to recover a physically sensible result. The key observation is that the final momentum, r_1^μ , of the outgoing particle after a classical scattering process must be on shell, $r_1^2 = m_1^2$.

We may express the final momentum in terms of the initial momentum and the impulse, so that

$$r_1^\mu = p_1^\mu + \Delta p_1^\mu. \tag{5.39}$$

The on-shell condition is then

$$(\Delta p_1)^2 + 2p_1 \cdot \Delta p_1 = 0. \tag{5.40}$$

At order e^2 , this requirement is satisfied trivially. At this order $(\Delta p_1)^2$ is negligible, while

$$p_1 \cdot \Delta p_1 = im_1 e^2 Q_1 Q_2 \int \hat{d}^4 \bar{q} \hat{\delta}(\bar{q} \cdot u_1) \hat{\delta}(\bar{q} \cdot u_2) e^{-i\bar{q} \cdot b} \bar{q} \cdot u_1 \frac{u_1 \cdot u_2}{\bar{q}^2} = 0, \quad (5.41)$$

using our result for the LO impulse in eq. (5.4).

The situation is less trivial at order e^4 , as neither $p_1 \cdot \Delta p_1$ nor $(\Delta p_1)^2$ vanish. In fact, at this order we may use eq. (5.4) once again to find that

$$\begin{aligned} (\Delta p_1)^2 &= -e^4 Q_1^2 Q_2^2 (u_1 \cdot u_2)^2 \\ &\times \int \hat{d}^4 \bar{q} \hat{d}^4 \bar{q}' \hat{\delta}(\bar{q} \cdot u_1) \hat{\delta}(\bar{q} \cdot u_2) \hat{\delta}(\bar{q}' \cdot u_1) \hat{\delta}(\bar{q}' \cdot u_2) e^{-i(\bar{q} + \bar{q}') \cdot b} \frac{\bar{q} \cdot \bar{q}'}{\bar{q}^2 \bar{q}'^2}. \end{aligned} \quad (5.42)$$

Meanwhile, to evaluate $p_1 \cdot \Delta p_1$ we must turn to our NLO result for the impulse, eq. (5.38). Thanks to the delta functions present in the impulse, we find a simple expression:

$$\begin{aligned} 2p_1 \cdot \Delta p_1 &= e^4 Q_1^2 Q_2^2 (u_1 \cdot u_2)^2 \\ &\times \int \hat{d}^4 \bar{q} \hat{\delta}(\bar{q} \cdot u_1) \hat{\delta}(\bar{q} \cdot u_2) e^{-i\bar{q} \cdot b} \int \hat{d}^4 \bar{\ell} \bar{\ell} \cdot u_1 \hat{\delta}'(\bar{\ell} \cdot u_1) \hat{\delta}(\bar{\ell} \cdot u_2) \frac{\bar{\ell} \cdot (\bar{\ell} - \bar{q})}{\bar{\ell}^2 (\bar{\ell} - \bar{q})^2}. \end{aligned} \quad (5.43)$$

To simplify this expression, it may be helpful to imagine working in the restframe of the timelike vector u_1 . Then, the $\bar{\ell}$ integral involves the distribution $\bar{\ell}_0 \hat{\delta}'(\bar{\ell}_0)$, while $\bar{q}_0 = 0$. Thus the $\bar{\ell}_0$ integral has the form

$$\int \hat{d}\bar{\ell}_0 \bar{\ell}_0 \hat{\delta}'(\bar{\ell}_0) f(\bar{\ell}_0^2) = - \int \hat{d}\bar{\ell}_0 \hat{\delta}(\bar{\ell}_0) f(\bar{\ell}_0^2). \quad (5.44)$$

Using this observation, we may simplify equation (5.43) to find

$$\begin{aligned} 2p_1 \cdot \Delta p_1 &= -e^4 Q_1^2 Q_2^2 (u_1 \cdot u_2)^2 \\ &\times \int \hat{d}^4 \bar{q} \hat{d}^4 \bar{\ell} \hat{\delta}(\bar{q} \cdot u_1) \hat{\delta}(\bar{q} \cdot u_2) \hat{\delta}(\bar{\ell} \cdot u_1) \hat{\delta}(\bar{\ell} \cdot u_2) e^{-i\bar{q} \cdot b} \frac{\bar{\ell} \cdot (\bar{\ell} - \bar{q})}{\bar{\ell}^2 (\bar{\ell} - \bar{q})^2} \\ &= e^4 Q_1^2 Q_2^2 (u_1 \cdot u_2)^2 \\ &\times \int \hat{d}^4 \bar{\ell} \hat{d}^4 \bar{q}' \hat{\delta}(\bar{\ell} \cdot u_1) \hat{\delta}(\bar{\ell} \cdot u_2) \hat{\delta}(\bar{q}' \cdot u_1) \hat{\delta}(\bar{q}' \cdot u_2) e^{-i(\bar{\ell} + \bar{q}') \cdot b} \frac{\bar{\ell} \cdot \bar{q}'}{\bar{\ell}^2 \bar{q}'^2}, \end{aligned} \quad (5.45)$$

where in the last line we set $\bar{q}' = \bar{q} - \bar{\ell}$. This expression is equal but opposite to eq. (5.42), and so the final momentum is on shell as it must be.

It is worth remarking that the part of the NLO impulse that is relevant in this cancellation arises solely from the cut boxes. One can therefore view this phenomenon as an analogue of the removal of iterations of the tree in the potential.

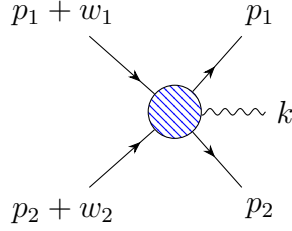


Figure 1: The amplitude $\mathcal{A}^{(0)}(p_1 + w_1, p_2 + w_2 \rightarrow p_1, p_2, k)$ appearing in the radiation kernel at leading order.

5.3 Radiation

The LO and NLO impulse are conservative in the sense that momentum is simply exchanged from particle 1 to particle 2 at these orders; it is only at NNLO that momentum radiated away back-reacts on the impulse. We will study this back-reaction in the next section, but first we turn to a direct computation of the radiated momentum.

The relevance of a classical limit of a scattering amplitude to what we are calling the radiation kernel was previously discussed by one of the authors and his collaborators [67]. The main advantage of the present discussion of radiation is that we have constructed a first-principles definition of the radiated momentum eq. (4.41) in terms of an on-shell scattering amplitude, eq. (4.40). Our goal in this section is to compute the LO radiation kernel explicitly in electrodynamics. Later, in section 6.2.2, we will see that the radiation kernel has the classical interpretation of a current.

The amplitude appearing in the radiation kernel is a five-point, tree amplitude (figure 1) which is easily computed. We find that the radiation kernel is,

$$\begin{aligned} \mathcal{R}^{(0)}(\bar{k}) = & 4 \int \hat{d}^4 \bar{w}_1 \hat{d}^4 \bar{w}_2 \hat{\delta}(2p_1 \cdot \bar{w}_1) \hat{\delta}(2p_2 \cdot \bar{w}_2) \hat{\delta}^{(4)}(\bar{k} - \bar{w}_1 - \bar{w}_2) e^{i\bar{w}_1 \cdot b} \\ & \times \left\{ \frac{Q_1^2 Q_2}{\bar{w}_2^2} \left[-p_2 \cdot \varepsilon + \frac{(p_1 \cdot p_2)(\bar{w}_2 \cdot \varepsilon)}{p_1 \cdot \bar{k}} + \frac{(p_2 \cdot \bar{k})(p_1 \cdot \varepsilon)}{p_1 \cdot \bar{k}} \right. \right. \\ & \left. \left. - \frac{(\bar{k} \cdot \bar{w}_2)(p_1 \cdot p_2)(p_1 \cdot \varepsilon)}{(p_1 \cdot \bar{k})^2} \right] + (1 \leftrightarrow 2) \right\}, \end{aligned} \quad (5.46)$$

where ε is the polarization vector for the emitted photon. As the quantities $p_i \cdot \bar{k}$ do not vanish on the support of the integrals in the radiation kernel, we have ignored the $i\epsilon$ factors in the massive propagators.

This lowest order radiation kernel is of $\mathcal{O}(\hbar^0)$, so we may now perform the integrals over the particle wavefunctions, which effectively replaces the momenta p_i in the

radiation kernel by their classical values $m_i u_i$.

$$\begin{aligned} \mathcal{R}^{(0)}(\bar{k}) \rightarrow & \frac{1}{m_1} \int \hat{d}^4 \bar{w}_1 \hat{d}^4 \bar{w}_2 \hat{\delta}(u_1 \cdot \bar{w}_1) \hat{\delta}(u_2 \cdot \bar{w}_2) \hat{\delta}^{(4)}(\bar{k} - \bar{w}_1 - \bar{w}_2) e^{i\bar{w}_1 \cdot b} \\ & \times \left\{ \frac{Q_1^2 Q_2}{\bar{w}_2^2} \left[-u_2 \cdot \varepsilon + \frac{(u_1 \cdot u_2)(\bar{w}_2 \cdot \varepsilon)}{u_1 \cdot \bar{k}} + \frac{(u_2 \cdot \bar{k})(u_1 \cdot \varepsilon)}{u_1 \cdot \bar{k}} \right. \right. \\ & \left. \left. - \frac{(\bar{k} \cdot \bar{w}_2)(u_1 \cdot u_2)(u_1 \cdot \varepsilon)}{(u_1 \cdot \bar{k})^2} \right] + (1 \leftrightarrow 2) \right\}. \end{aligned} \quad (5.47)$$

We will see this expression once again in section 6.2.2, appearing as a classical current.

5.4 Momentum Conservation and Radiation Reaction

We have already seen that conservation of momentum holds exactly (in sect. 3.5) and in our classical expressions (in sect. 4.5). Let us now make sure that there is no subtlety in these discussions by explicit calculation.

To do so, we calculate the part of the NNLO impulse $I_{(2),\text{cl}}^{\mu,(\text{rad})}$ which encodes radiation reaction, defined in eq. (4.46). The two amplitudes appearing in equation (4.46) are in common with the amplitudes relevant for the radiated momentum, equation (4.42), though they are evaluated at slightly different kinematics. It will be convenient to change the sign of \bar{w}_i here; with that change, the amplitudes are:

$$\begin{aligned} \bar{\mathcal{A}}^{(0)}(p_1 p_2 \rightarrow p_1 - \hbar \bar{w}_1, p_2 - \hbar \bar{w}_2, \bar{k}) = & \\ \frac{4Q_1^2 Q_2}{\hbar^2 \bar{w}_2^2} \left[-p_2 \cdot \varepsilon + \frac{(p_1 \cdot p_2)(\bar{w}_2 \cdot \varepsilon)}{p_1 \cdot \bar{k}} + \frac{(p_2 \cdot \bar{k})(p_1 \cdot \varepsilon)}{p_1 \cdot \bar{k}} - \frac{(\bar{k} \cdot \bar{w}_2)(p_1 \cdot p_2)(p_1 \cdot \varepsilon)}{(p_1 \cdot \bar{k})^2} \right] & (5.48) \\ + (1 \leftrightarrow 2), & \end{aligned}$$

and

$$\begin{aligned} \bar{\mathcal{A}}^{(0)*}(p_1 + \hbar \bar{q}_1, p_2 + \hbar \bar{q}_2 \rightarrow p_1 - \hbar \bar{w}_1, p_2 - \hbar \bar{w}_2, \bar{k}) = & \\ \frac{4Q_1^2 Q_2}{\hbar^2 \bar{w}_2^2} \left[-p_2 \cdot \varepsilon^* + \frac{(p_1 \cdot p_2)(\bar{w}_2' \cdot \varepsilon^*)}{p_1 \cdot \bar{k}} + \frac{(p_2 \cdot \bar{k})(p_1 \cdot \varepsilon^*)}{p_1 \cdot \bar{k}} - \frac{(\bar{k} \cdot \bar{w}_2')(p_1 \cdot p_2)(p_1 \cdot \varepsilon^*)}{(p_1 \cdot \bar{k})^2} \right] & (5.49) \\ + (1 \leftrightarrow 2), & \end{aligned}$$

where we find it convenient to define $\bar{w}_i' = \bar{q}_i + \bar{w}_i$ (after the change of sign).

We can now write the impulse contribution as,

$$I_{(2),\text{cl}}^{\mu,(\text{rad})} = -e^6 \left\langle \left\langle \int d\Phi(\bar{k}) \prod_{i=1,2} \int \hat{d}^4 \bar{w}_i \hat{d}^4 \bar{w}_i' \bar{w}_1^\mu \mathcal{X}(\bar{w}_1, \bar{w}_2, \bar{k}) \mathcal{X}^*(\bar{w}_1', \bar{w}_2', \bar{k}) \right\rangle \right\rangle, \quad (5.50)$$

where

$$\begin{aligned} \mathcal{X}(\bar{w}_1, \bar{w}_2, \bar{k}) &= 4 \hat{\delta}(2\bar{w}_1 \cdot p_1) \hat{\delta}(2\bar{w}_2 \cdot p_2) \hat{\delta}^{(4)}(\bar{k} - \bar{w}_1 - \bar{w}_2) e^{ib \cdot \bar{w}_1} \\ &\times \left\{ Q_1^2 Q_2 \frac{\varepsilon_\mu}{\bar{w}_2^2} \left[-p_2^\mu + \frac{p_1 \cdot p_2 \bar{w}_2^\mu}{p_1 \cdot \bar{k}} + \frac{p_2 \cdot \bar{k} p_1^\mu}{p_1 \cdot \bar{k}} \right. \right. \\ &\quad \left. \left. - \frac{(\bar{k} \cdot \bar{w}_2)(p_1 \cdot p_2) p_1^\mu}{(p_1 \cdot \bar{k})^2} \right] + (1 \leftrightarrow 2) \right\}. \end{aligned} \quad (5.51)$$

This expression is directly comparable to those for radiated momentum: eq. (5.50), and the equivalent impulse contribution to particle 2, balance the radiated momentum eq. (4.43) using $\bar{w}_1^\mu + \bar{w}_2^\mu = \bar{k}^\mu$, provided that the radiation kernel, eq. (5.46), is related to integrals over \mathcal{X} . Indeed this relationship holds: the integrations present in the radiation kernel are supplied by the \bar{w}_i and \bar{w}'_i integrals in eq. (5.50); these integrations disentangle in the sum of impulses on particles 1 and 2 when we impose $\bar{w}_1^\mu + \bar{w}_2^\mu = \bar{k}^\mu$, and then form the square of the radiation kernel.

It is interesting to compare this radiated momentum with the situation in traditional formulations of classical physics, where one must include the ALD radiation reaction force by hand in order to enforce momentum conservation. Because the situation is simplest when only one particle is dynamical, let us take the mass m_2 to be very large compared to m_1 in the remainder of this section, and work in particle 2's rest frame. In this frame, it does not radiate, and the only radiation reaction is on particle 1 — the radiated momentum is precisely balanced by the impulse on particle 1 due to the ALD force. We can therefore continue our discussion with reference to our expression for radiated momentum, eq. (4.43) and the radiation kernel, eq. (5.46). In this situation we may also simplify the kernels by dropping the $(1 \leftrightarrow 2)$ instruction: notice that the explicit terms in the kernel of equation (5.46) are linear in m_2 . Terms obtained by symmetrising in particle labels are therefore linear in m_1 , and so are subdominant when $m_2 \gg m_1$.

We will compute the impulse due to the ALD force directly from its classical expression in sect. 6.3. But in preparation for that comparison there is one step which we must take. Classical expressions for the force—which involve only the particle's momentum and its derivatives—do not involve any photon phase space. So we must perform the integration over $d\Phi(\bar{k})$ which is present in eq. (4.43).

To organise the calculation, we integrate over the \bar{q}_1 variables in the radiation kernel, eq. (5.46) using the four-fold delta function, so that we may write the radiated momentum as,

$$R_{\text{cl}}^{\mu,(0)} = -\frac{e^6 Q_1^4 Q_2^2}{m_1^2} \int \hat{d}^4 \bar{q} \hat{d}^4 \bar{q}' e^{-ib \cdot (\bar{q} - \bar{q}')} \hat{\delta}(u_1 \cdot (\bar{q} - \bar{q}')) \frac{\hat{\delta}(u_2 \cdot \bar{q})}{\bar{q}^2} \frac{\hat{\delta}(u_2 \cdot \bar{q}')}{\bar{q}'^2} Y_{\text{r}}^\mu, \quad (5.52)$$

where we renamed the remaining variables, $\bar{w}_2 \rightarrow \bar{q}$ and $\bar{w}'_2 \rightarrow \bar{q}'$, in order to match the notation used later in sect. 6. After some algebra we find,

$$Y_r^\mu = \int d\Phi(\bar{k}) \hat{\delta}(u_1 \cdot \bar{k} - \bar{E}) \bar{k}^\mu \left[1 + \frac{(u_1 \cdot u_2)^2 (\bar{q} \cdot \bar{q}')}{\bar{E}^2} + \frac{(u_2 \cdot \bar{k})^2}{\bar{E}^2} - \frac{(u_1 \cdot u_2)(u_2 \cdot \bar{k}) \bar{k} \cdot (\bar{q} + \bar{q}')}{\bar{E}^3} + \frac{(u_1 \cdot u_2)^2 (\bar{k} \cdot \bar{q})(\bar{k} \cdot \bar{q}')}{\bar{E}^4} \right]. \quad (5.53)$$

The quantity \bar{E} is defined to be $\bar{E} = u_1 \cdot \bar{k}$; in view of the delta function, the integral is constrained so that $\bar{E} = u_1 \cdot \bar{q}$. This quantity is the wavenumber of the photon in the rest frame of particle 1, and is fixed from the point of view of the phase space integration. As a result, the integrals are simple: there are two delta functions (one explicit, one in the phase space measure) which can be used to perform the \bar{k}^0 integration and to fix the magnitude of the spatial wavevector. The remaining integrals are over angles and are performed in Appendix C. The radiated momentum takes a remarkably simple form after the phase space integration:

$$R_{\text{cl}}^{\mu,(0)} = -\frac{e^6 Q_1^4 Q_2^2}{3\pi m_1^2} \int \hat{d}^4 \bar{q} \hat{d}^4 \bar{q}' e^{-ib \cdot (\bar{q} - \bar{q}')} \hat{\delta}(u_1 \cdot (\bar{q} - \bar{q}')) \frac{\hat{\delta}(u_2 \cdot \bar{q})}{\bar{q}^2} \frac{\hat{\delta}(u_2 \cdot \bar{q}')}{\bar{q}'^2} \Theta(u_1 \cdot \bar{q}) \times [(u_1 \cdot \bar{q})^2 + \bar{q} \cdot \bar{q}' (u_1 \cdot u_2)^2] u_1^\mu. \quad (5.54)$$

The Θ function is a remnant of the photon phase space volume, so it will be convenient to remove it. The delta functions in the integrand in eq. (5.54) constrain the components of the vectors \bar{q} and \bar{q}' which lie in the two dimensional space spanned by u_1 and u_2 . Let us call the components of q and q' in this plane to be q_{\parallel} and q'_{\parallel} . Then the delta functions set $q_{\parallel} = q'_{\parallel}$. As a result, the integrand (ignoring the Θ function) is symmetric in $q_{\parallel} \rightarrow -q_{\parallel}$. Consequently we may symmetrise to find

$$R_{\text{cl}}^{\mu,(0)} = -\frac{e^6 Q_1^4 Q_2^2}{6\pi m_1^2} \int \hat{d}^4 \bar{q} \hat{d}^4 \bar{q}' e^{-ib \cdot (\bar{q} - \bar{q}')} \hat{\delta}(u_1 \cdot (\bar{q} - \bar{q}')) \frac{\hat{\delta}(u_2 \cdot \bar{q})}{\bar{q}^2} \frac{\hat{\delta}(u_2 \cdot \bar{q}')}{\bar{q}'^2} \times [(u_1 \cdot \bar{q})^2 + \bar{q} \cdot \bar{q}' (u_1 \cdot u_2)^2] u_1^\mu. \quad (5.55)$$

We will see in sect. 6.3 that this expression is equal but opposite to the impulse obtained from the classical ALD force.

6 Classical Calculations

In previous sections, we have shown how to understand the electromagnetic scattering of point-like particles Q_i using the methods of quantum field theory. We now turn

to a purely classical approach to the same observables, restricting (once again) to electromagnetic scattering for simplicity. Our goal in this section is to reassure any skeptical reader that the expressions which we have claimed to be classical, are indeed classical. This is straightforward in electrodynamics; it would be harder in gravity. We expect, however, that an application of our methods in a gravitational context will be advantageous.

As usual we have in mind a two-body collision, and we discuss, firstly, the impulse on a particle, secondly the momentum radiated away, and lastly the topic of conservation of momentum and the ALD radiation reaction force. Our classical approach will be to solve the coupled equations of motion perturbatively. As we will see, these calculations have an iterative structure. This iteration is straightforward in principle, though it quickly becomes tedious in practice. For this reason we will frequently restrict to the case where the mass m_2 of particle 2 is much larger than the mass m_1 of particle 1, so that particle 2 can be treated as being static. This assumption was unnecessary using quantum methods⁴, where the symmetry of Feynman diagrams simplifies matters.

6.1 The classical electromagnetic impulse

Classically, we may take our particles to move along world-lines $x_i(\tau_i)$ with proper velocities $v_i(\tau_i) = dx_i/d\tau_i$ and momenta $p_i(\tau_i) = m_i v_i(\tau_i)$. We must solve the Maxwell equation,

$$\partial_\mu F^{\mu\nu}(x) = J^\nu(x) = e \sum_i Q_i \int d\tau_i \delta^4(x - x_i(\tau_i)) v_i^\nu(\tau_i), \quad (6.1)$$

and the Lorentz force laws⁵,

$$\frac{dp_i^\mu}{d\tau_i} = e Q_i F^{\mu\nu}(x_i(\tau_i)) v_{i\nu}(\tau_i). \quad (6.2)$$

To set up the perturbative method, we assume that the trajectories can be expanded as a power series in the coupling. At zeroth order in the expansion, the trajectories are simply straight lines:

$$x_1(\tau_1) = b + u_1 \tau_1, \quad x_2(\tau_2) = u_2 \tau_2, \quad (6.3)$$

where u_1 and u_2 are constant vectors. Note that, as with our quantum mechanical setup in eq. (3.1), we have aligned the initial trajectory of particle 2 with the spatial origin, and have translated particle 1 through an impact parameter b relative to particle 2.

⁴With the exception of radiation reaction—in that case, we took m_2 large to prepare for a comparison with classical results.

⁵We will need to include the ALD force law later to account for radiation reaction.

The vectors u_i are the zeroth order terms in the proper velocities: $v_i(\tau_i) = u_i + \mathcal{O}(e^2)$; they will play a prominent role below.

The perturbative expansion proceeds by determining the first order electromagnetic field sourced by the two particles, taken to be moving on straight-line trajectories. Knowledge of the field allows us to compute the first order forces on the particles, and hence the associated (small) first order deviations of the trajectories from straight line motion. Armed with this knowledge of the first order trajectory, we may compute the second order fields, forces and deviations. Iterating this procedure allows us to compute to any desired perturbative order. More formally, we expand the trajectories as,

$$\begin{aligned} x_1(\tau) &= b + u_1\tau + \Delta^{(1)}x_1(\tau) + \Delta^{(2)}x_1(\tau) + \cdots, \\ x_2(\tau) &= u_2\tau + \Delta^{(1)}x_2(\tau) + \Delta^{(2)}x_2(\tau) + \cdots, \end{aligned} \tag{6.4}$$

where $\Delta^{(n)}x(\tau)$ is of order e^{2n} . We will similarly expand the velocities and forces perturbatively:

$$v_i(\tau_i) = u_i + \Delta^{(1)}v_i(\tau_i) + \Delta^{(2)}v_i(\tau_i), \tag{6.5}$$

$$f_i(\tau_i) = \Delta^{(1)}f_i(\tau_i) + \Delta^{(2)}f_i(\tau_i), \tag{6.6}$$

where again $\Delta^{(n)}v_i(\tau_i)$ and $\Delta^{(n)}f_i(\tau_i)$ are of order e^{2n} .

6.1.1 Leading order

Our first order of business is to determine the leading order electromagnetic fields. Classically, the force on particle 1 is due to the field of particle 2; as the result is symmetric under interchange of the two particles, we will only compute the field due to particle 2. Working in Lorenz gauge, the relevant gauge field is,

$$\partial^2 A_2^\mu(x) = Q_2 e \int d\tau \delta^4(x - u_2\tau) u_2^\mu. \tag{6.7}$$

We find it convenient to work in Fourier space, choosing the conventions

$$f(x) = \int \hat{d}^4\bar{q} \tilde{f}(\bar{q}) e^{-i\bar{q}\cdot x}, \tag{6.8}$$

$$\tilde{f}(\bar{q}) = \int d^4x f(x) e^{i\bar{q}\cdot x}. \tag{6.9}$$

The momentum-space gauge field is easily found to be

$$\tilde{A}_2^\mu(\bar{q}) = -\frac{eQ_2}{\bar{q}^2} u_2^\mu \hat{\delta}(\bar{q}\cdot u_2), \tag{6.10}$$

with field strength (in position space)

$$F_2^{\mu\nu}(x) = ieQ_2 \int \hat{d}^4\bar{q} \hat{\delta}(\bar{q} \cdot u_2) e^{-i\bar{q} \cdot x} \frac{\bar{q}^\mu u_2^\nu - u_2^\mu \bar{q}^\nu}{\bar{q}^2}. \quad (6.11)$$

The Lorentz force, equation (6.2), on particle 1 requires this field strength evaluated at the position of particle 1. At leading order, we may use the straight line approximation to the trajectory of particle 1, so that the leading order force is

$$\frac{dp_1^\mu}{d\tau_1} = ie^2 Q_1 Q_2 \int \hat{d}^4\bar{q} \hat{\delta}(\bar{q} \cdot u_2) e^{-i\bar{q} \cdot (b+u_1\tau_1)} \frac{\bar{q}^\mu u_1 \cdot u_2 - u_2^\mu \bar{q} \cdot u_1}{\bar{q}^2}. \quad (6.12)$$

The leading order impulse is the total time integral of the force,

$$\Delta p_1^{\mu,(0)} \equiv \int_{-\infty}^{\infty} d\tau_1 \frac{dp_1^\mu}{d\tau_1} \quad (6.13)$$

$$= ie^2 Q_1 Q_2 \int \hat{d}^4\bar{q} \hat{\delta}(\bar{q} \cdot u_1) \hat{\delta}(\bar{q} \cdot u_2) e^{-i\bar{q} \cdot b} \bar{q}^\mu u_1 \cdot u_2 \frac{1}{\bar{q}^2}, \quad (6.14)$$

in complete agreement with eq. (5.4), which was obtained from a tree-level scattering amplitude.

6.1.2 Next-to-leading order

The LO calculation is very simple, and so it is more interesting to look at the next order of perturbation theory. In our quantum-mechanical treatment, this following order was computed in section 5.2 using loop diagrams. In this section, we derive the same expression by iterating the perturbative solution of the classical equations to the next order. The fact that both methods yield the same result is a vivid demonstration that loops involving massive particles are not simply quantum corrections [29].

In this section we take particle 2 to be static, leaving the more general case as an exercise for the reader. When particle 2 is static, its field strength is given by equation (6.11) to all orders.

The NLO impulse is the time integral of the NLO Lorentz force. With our assumption of a static particle 2, we know the gauge field acting on particle 1 exactly, and so the origin of this NLO force is simply that particle 1 is not quite moving on a straight line. Thus, to find the correction to the force, we must first determine the motion of particle 1 with NLO accuracy.

We obtain the first perturbative correction to the velocity and to the trajectory of particle 1 by integrating the leading order force, equation (6.12) from time $\tau_1 = -\infty$ to a finite time τ_1 . This integral must converge as $\tau_1 \rightarrow -\infty$, so we follow standard

practice (see, for example, Jackson [68] p. 676) and replace $\bar{q} \cdot u_1$ in the argument of the exponential with $\bar{q} \cdot u_1 + i\epsilon$. The correction to the velocity is then

$$\begin{aligned} m_1 \Delta^{(1)} v_1^\mu &= ie^2 Q_1 Q_2 \int \hat{d}^4 \bar{q} \hat{\delta}(\bar{q} \cdot u_2) e^{-i\bar{q} \cdot b} \frac{\bar{q}^\mu u_1 \cdot u_2 - u_2^\mu \bar{q} \cdot u_1}{\bar{q}^2} \int_{-\infty}^{\tau_1} d\tau_1 e^{-i(\bar{q} \cdot u_1 + i\epsilon)\tau_1} \\ &= -e^2 Q_1 Q_2 \int \hat{d}^4 \bar{q} \hat{\delta}(\bar{q} \cdot u_2) e^{-i\bar{q} \cdot (b + u_1 \tau_1)} \frac{\bar{q}^\mu u_1 \cdot u_2 - u_2^\mu \bar{q} \cdot u_1}{\bar{q}^2 (\bar{q} \cdot u_1 + i\epsilon)}, \end{aligned} \quad (6.15)$$

where on the second line, we have displayed the $i\epsilon$ convergence factor in the denominator explicitly while leaving it implicit in the argument of the exponential. The leading correction to the position of the particle is given by integrating once more, with the result:

$$\Delta^{(1)} x_1^\mu(\tau_1) = -i \frac{e^2 Q_1 Q_2}{m_1} \int \hat{d}^4 \bar{q} \hat{\delta}(\bar{q} \cdot u_2) e^{-i\bar{q} \cdot (b + u_1 \tau_1)} \frac{\bar{q}^\mu u_1 \cdot u_2 - u_2^\mu \bar{q} \cdot u_1}{\bar{q}^2 (\bar{q} \cdot u_1 + i\epsilon)^2}. \quad (6.16)$$

We have now collected the information we need to compute the NLO Lorentz force $\Delta^{(1)} f^\mu$, and therefore the NLO impulse. Recalling that the field strength involved in the force is given by equation (6.11), it is easy to see that the NLO force is

$$\begin{aligned} \Delta^{(1)} f^\mu &= ie^2 Q_1 Q_2 \int \hat{d}^4 \bar{\ell} \hat{\delta}(\bar{\ell} \cdot u_2) e^{-i\bar{\ell} \cdot (b + u_1 \tau_1)} \frac{\bar{\ell}^\mu u_2^\nu - \bar{\ell}^\nu u_2^\mu}{\bar{\ell}^2} \\ &\quad \times \left(\frac{d}{d\tau_1} \Delta^{(1)} x_{1\nu}(\tau_1) - i\bar{\ell} \cdot \Delta^{(1)} x_1(\tau_1) u_{1\nu} \right), \end{aligned} \quad (6.17)$$

where we relabelled the variable of integration $\bar{q} \rightarrow \bar{\ell}$ for later convenience. Using our knowledge of the corrected trajectory, we evaluate

$$\begin{aligned} \frac{d}{d\tau} \Delta^{(1)} x_{1\nu}(\tau_1) - i\bar{\ell} \cdot \Delta^{(1)} x_1(\tau_1) u_{1\nu} &= -\frac{e^2 Q_1 Q_2}{m_1} \int \hat{d}^4 \bar{q}' \hat{\delta}(\bar{q}' \cdot u_2) e^{-i\bar{q}' \cdot (b + u_1 \tau_1)} \\ &\quad \times \left(\frac{\bar{q}'^\nu u_1 \cdot u_2 - u_{2\nu} \bar{q}' \cdot u_1}{\bar{q}'^2 (\bar{q}' \cdot u_1 + i\epsilon)} + \frac{\bar{\ell} \cdot \bar{q}' u_1 \cdot u_2 u_{1\nu}}{\bar{q}'^2 (\bar{q}' \cdot u_1 + i\epsilon)^2} \right), \end{aligned} \quad (6.18)$$

omitting terms which vanish on the support of the delta functions in equation (6.17). The integral $\int_{-\infty}^{\infty} d\tau_1 \Delta^{(1)} f^\mu$ is the next-to-leading order impulse, given explicitly by

$$\begin{aligned} \Delta p_1^{\mu, (1)} \Big|_{m_2 \rightarrow \infty} &= \frac{ie^4 Q_1^2 Q_2^2}{m_1} \int \hat{d}^4 \bar{q} \hat{\delta}(\bar{q} \cdot u_1) \hat{\delta}(\bar{q} \cdot u_2) e^{-i\bar{q} \cdot b} \int \hat{d}^4 \bar{\ell} \frac{\hat{\delta}(\bar{\ell} \cdot u_2)}{\bar{\ell}^2 (\bar{\ell} - \bar{q})^2} \\ &\quad \times \left[1 + \frac{\bar{\ell} \cdot (\bar{\ell} - \bar{q}) (u_1 \cdot u_2)^2}{(\bar{\ell} \cdot u_1 - i\epsilon)^2} \right] \bar{\ell}^\mu. \end{aligned} \quad (6.19)$$

To obtain this result, we shifted one of the variables of integration by setting $\bar{q} = \bar{q}' + \bar{\ell}$.

This expression for the NLO impulse is not quite in the form we obtained using quantum methods in section 5.2. The necessary rearrangement is as follows. We exploit the change of variable $\bar{\ell}' = \bar{q} - \bar{\ell}$ and define a vector integral

$$I^\mu = \int \hat{d}^4 \bar{\ell} \frac{\hat{\delta}(\bar{\ell} \cdot u_2)}{\bar{\ell}^2 (\bar{\ell} - \bar{q})^2} \left[1 + \frac{\bar{\ell} \cdot (\bar{\ell} - \bar{q})(u_1 \cdot u_2)^2}{(\bar{\ell} \cdot u_1 - i\epsilon)^2} \right] \bar{\ell}^\mu, \quad (6.20)$$

then we find

$$\begin{aligned} I^\mu &= \int \hat{d}^4 \bar{\ell}' \frac{\hat{\delta}(\bar{\ell}' \cdot u_2)}{\bar{\ell}'^2 (\bar{\ell}' - \bar{q})^2} \left[1 + \frac{\bar{\ell}' \cdot (\bar{\ell}' - \bar{q})(u_1 \cdot u_2)^2}{(\bar{\ell}' \cdot u_1 + i\epsilon)^2} \right] (\bar{q}^\mu - \bar{\ell}'^\mu) \\ &= \frac{1}{2} \int \hat{d}^4 \bar{\ell} \frac{\hat{\delta}(\bar{\ell} \cdot u_2)}{\bar{\ell}^2 (\bar{\ell} - \bar{q})^2} \left\{ \left[1 + \frac{\bar{\ell} \cdot (\bar{\ell} - \bar{q})(u_1 \cdot u_2)^2}{(\bar{\ell} \cdot u_1 + i\epsilon)^2} \right] \bar{q}^\mu \right. \\ &\quad \left. - i \left[\bar{\ell} \cdot (\bar{\ell} - \bar{q})(u_1 \cdot u_2)^2 \hat{\delta}'(\bar{\ell} \cdot u_1) \right] \bar{\ell}^\mu \right\}. \end{aligned} \quad (6.21)$$

Putting the pieces together, we arrive at our final result for the NLO impulse when $m_2 \rightarrow \infty$:

$$\begin{aligned} \Delta p_1^{\mu, (1)} \Big|_{m_2 \rightarrow \infty} &= \int \hat{d}^4 \bar{q} \hat{\delta}(\bar{q} \cdot u_1) \hat{\delta}(\bar{q} \cdot u_2) e^{-i\bar{q} \cdot b} \frac{e^4 Q_1^2 Q_2^2}{2m_1} \int \hat{d}^4 \bar{\ell} \frac{\hat{\delta}(\bar{\ell} \cdot u_2)}{\bar{\ell}^2 (\bar{\ell} - \bar{q})^2} \\ &\quad \times \left[i\bar{q}^\mu \left(1 + \frac{\bar{\ell} \cdot (\bar{\ell} - \bar{q})(u_1 \cdot u_2)^2}{(\bar{\ell} \cdot u_1 + i\epsilon)^2} \right) + \bar{\ell}^\mu \bar{\ell} \cdot (\bar{\ell} - \bar{q})(u_1 \cdot u_2)^2 \hat{\delta}'(\bar{\ell} \cdot u_1) \right]. \end{aligned} \quad (6.22)$$

We have thereby reproduced all terms in eq. (5.38) which survive in the limit $m_2 \rightarrow \infty$, consistent with our present assumption that m_2 is very large. The full result for the NLO impulse requires accounting for corrections to the field strength of particle 2 due to its motion. The mechanics of the calculation are very much the same as in the discussion above. Taking these additional effects into account, one finds that the NLO impulse is precisely eq. (5.38).

6.2 Classical Radiated Momentum

Our next topic is the momentum radiated during a classical collision, using the standard methods of classical field theory. We first discuss a general expression for the momentum radiation which is analogous to the all-order radiation formula, equation (4.39), we found using quantum methods. We then apply the formula at leading order, making explicit contact with the LO radiation kernel we computed in section 5.3.

6.2.1 General expressions

The electromagnetic stress-energy tensor,

$$T^{\mu\nu}(x) = F^{\mu\alpha}(x)F_{\alpha\nu}(x) + \frac{1}{4}\eta^{\mu\nu}F^{\alpha\beta}(x)F_{\alpha\beta}(x), \quad (6.23)$$

is the key quantity which describes the distribution and flux of energy and momentum. In particular, the (four-)momentum flux through a three dimensional surface $\partial\Omega$ with surface element $d\Sigma_\nu$ is,

$$K^\mu = \int_{\partial\Omega} d\Sigma_\nu T^{\mu\nu}(x). \quad (6.24)$$

We are interested in the total momentum radiated as two particles scatter. At each time t , we therefore surround the two particles with a large sphere. The instantaneous flux of momentum is measured by integrating over the surface area of the sphere; the total momentum radiated is then the integral of this instantaneous flux over all times. It is straightforward to determine the momentum radiated by direct integration over these spheres using textbook methods, as discussed in Appendix D.

A simpler but more indirect method is the following. We wish to use the Gauss theorem to write,

$$K^\mu = \int_{\partial\Omega} d\Sigma_\nu T^{\mu\nu}(x) = \int d^4x \partial_\nu T^{\mu\nu}(x). \quad (6.25)$$

However, the spheres surrounding our particle are not the boundary of all spacetime: they do not include the timelike future and past boundaries. To remedy this, we use a trick due to Dirac [50].

The radiation we have in mind is causal, so we solve the Maxwell equation with retarded boundary conditions. We denote these fields by $F_{\text{ret}}^{\mu\nu}(x)$. We could equivalently solve the Maxwell equation using the advanced Green's function. If we wish to determine precisely the same fields $F_{\text{ret}}^{\mu\nu}(x)$ but using the advanced Green's function, we must add a homogeneous solution of the Maxwell equation. Fitting the boundary conditions in this way requires subtracting the incoming radiation field $F_{\text{in}}^{\mu\nu}(x)$ which is present in the advanced solution (but not in the retarded solution) and adding the outgoing radiation field (which is present in the retarded solution, but not the advanced solution.) In other words,

$$F_{\text{ret}}^{\mu\nu}(x) - F_{\text{adv}}^{\mu\nu}(x) = -F_{\text{in}}^{\mu\nu}(x) + F_{\text{out}}^{\mu\nu}(x). \quad (6.26)$$

Now, the radiated momentum K^μ in which we are interested is described by $F_{\text{out}}^{\mu\nu}(x)$. The field $F_{\text{in}}^{\mu\nu}(x)$ transports the same total amount of momentum in from infinity, ie it transports momentum $-K^\mu$ out. Therefore the difference between the momenta transported out to infinity by the retarded and by the advanced fields is simply $2K^\mu$. This is useful, because the contributions of the point-particle sources cancel in this difference.

The relationship between the momentum transported by the retarded and advanced field is reflected at the level of the Green's functions themselves. The difference in the

Green's function takes an instructive form:

$$\begin{aligned}\tilde{G}_{\text{ret}}(\bar{k}) - \tilde{G}_{\text{adv}}(\bar{k}) &= \frac{(-1)}{(\bar{k}^0 + i\epsilon)^2 - \bar{\mathbf{k}}^2} - \frac{(-1)}{(\bar{k}^0 - i\epsilon)^2 - \bar{\mathbf{k}}^2} \\ &= i (\Theta(\bar{k}^0) - \Theta(-\bar{k}^0)) \hat{\delta}(\bar{k}^2).\end{aligned}\quad (6.27)$$

In this equation, $\bar{\mathbf{k}}$ denotes the spatial components of wavenumber four-vector \bar{k} . This difference is a homogeneous solution of the wave equation since it is supported on $\bar{k}^2 = 0$. The two terms correspond to positive and negative angular frequencies. As we will see, the relative sign ensures that the momenta transported to infinity add.

With this in mind, we return to the problem of computing the momentum radiated and write,

$$2K^\mu = \int_{\partial\Omega} d\Sigma_\nu (T_{\text{ret}}^{\mu\nu}(x) - T_{\text{adv}}^{\mu\nu}(x)). \quad (6.28)$$

In this difference, the contribution of the sources at timelike infinity cancel, so we may regard the surface $\partial\Omega$ as the boundary of spacetime. Therefore,

$$2K^\mu = \int d^4x \partial_\nu (T_{\text{ret}}^{\mu\nu}(x) - T_{\text{adv}}^{\mu\nu}(x)) = - \int d^4x (F_{\text{ret}}^{\mu\nu}(x) - F_{\text{adv}}^{\mu\nu}(x)) J_\nu(x), \quad (6.29)$$

where the last equality follows from the equations of motion. We now pass to momentum space, noting that,

$$F^{\mu\nu}(x) = -i \int \hat{d}^4\bar{k} \left(\bar{k}^\mu \tilde{A}^\nu(\bar{k}) - \bar{k}^\nu \tilde{A}^\mu(\bar{k}) \right) e^{-i\bar{k}\cdot x}. \quad (6.30)$$

Using conservation of momentum, the radiated momentum becomes,

$$\begin{aligned}2K^\mu &= i \int \hat{d}^4\bar{k} \bar{k}^\mu \left(\tilde{A}_{\text{ret}}^\nu(\bar{k}) - \tilde{A}_{\text{adv}}^\nu(\bar{k}) \right) \tilde{J}_\nu^*(\bar{k}), \\ &= - \int \hat{d}^4\bar{k} \bar{k}^\mu (\Theta(\bar{k}^0) - \Theta(-\bar{k}^0)) \hat{\delta}(\bar{k}^2) \tilde{J}^\nu(\bar{k}) \tilde{J}_\nu^*(\bar{k}).\end{aligned}\quad (6.31)$$

The two different Θ functions arise from the outgoing and incoming radiation fields. Setting $k'^\mu = -k^\mu$ in the second term, and then dropping the prime, it is easy to see that the two terms add as anticipated. We arrive at a simple general result for the momentum radiated:

$$\begin{aligned}K^\mu &= - \int \hat{d}^4\bar{k} \Theta(\bar{k}^0) \hat{\delta}(\bar{k}^2) \bar{k}^\mu \tilde{J}^\nu(\bar{k}) \tilde{J}_\nu^*(\bar{k}) \\ &= - \int d\Phi(\bar{k}) \bar{k}^\mu \tilde{J}^\nu(\bar{k}) \tilde{J}_\nu^*(\bar{k}).\end{aligned}\quad (6.32)$$

It is worth pausing to compare this general classical formula for the radiated momentum to the expression, eq. (4.41) which we derived in sect. 4.4. Evidently the radiation kernel we defined in eq. (4.40) is related to the classical current $\tilde{J}^\mu(\bar{k})$. This fact was anticipated in ref. [67]. Indeed, if we introduce a basis of polarisation vectors $\varepsilon^{\mu(h)}(\bar{k})$ associated with the wavevector \bar{k} with helicity h , we may write the classical momentum radiated as,

$$K^\mu = \sum_h \int d\Phi(k) \bar{k}^\mu \left| \varepsilon^{(h)} \cdot \tilde{J}(\bar{k}) \right|^2, \quad (6.33)$$

where here we have written the sum over helicities explicitly. In the next subsection, we will take this observation a step further by demonstrating that the leading order radiation kernel is proportional to $\varepsilon^{(h)} \cdot \tilde{J}(\bar{k})$ on the support of the phase space integral in eq. (6.33).

6.2.2 Application at leading order

We have established a convenient, general formula for the momentum radiated in the classical theory. It is now rather straightforward to use this expression, as well as our perturbative knowledge of the trajectories, in order to determine the momentum radiated order by order in perturbation theory. We will again simplify our classical discussion by assuming that m_2 is so large that we can treat particle 2 as static. Our goal in this section will be to compare the classical momentum radiated with our previous quantum calculation for the expectation of this quantity, in the limit where this expectation is very sharply peaked. As we have seen, the general expressions for the radiation have the same structure so it will be enough for us to compare the radiation kernel to the classical current.

Static particles do not radiate, so we can ignore the contribution of particle 2 while evaluating the momentum radiated. To see that this is indeed the case, note that the part of the current involving particle 2 is

$$J_2^\mu = eQ_2 \int d\tau_2 u_2^\mu \delta^{(4)}(x - u_2\tau_2) \Rightarrow \tilde{J}_2(\bar{k}) = eQ_2 u_2^\mu \hat{\delta}(\bar{k} \cdot u_2). \quad (6.34)$$

Working in the rest frame of particle 2, the delta function in $\tilde{J}_2(\bar{k})$ forces $\bar{k}^0 = 0$. But on the other hand the integral over \bar{k} in the radiated momentum, eq. (6.32), requires that $\bar{k}^0 = |\bar{\mathbf{k}}|$. The only solution is $\bar{k}^\mu = 0$, so the integral vanishes.

Therefore we may replace the current $\tilde{J}^\mu(\bar{k})$ in the radiated momentum with the

contribution $\tilde{J}_1^\mu(\bar{k})$ from particle 1. This current is,

$$\begin{aligned}\tilde{J}_1^\mu(\bar{k}) &= eQ_1 \int d\tau_1 v_1^\mu(\tau_1) e^{i\bar{k}\cdot x_1(\tau_1)} \\ &= eQ_1 u_1^\mu \hat{\delta}(\bar{k}\cdot u_1) e^{i\bar{k}\cdot b} \\ &\quad + eQ_1 \int d\tau_1 e^{i\bar{k}\cdot(b+u_1\tau_1)} (\Delta^{(1)} v_1^\mu(\tau_1) + iu_1^\mu \bar{k}\cdot \Delta^{(1)} x_1(\tau_1)) + \mathcal{O}(e^5).\end{aligned}\tag{6.35}$$

We can ignore the leading-order static part of this current just as we ignored the static current of particle 2. The dynamical part involves the perturbative correction to the trajectory of particle 1, which we computed in section 6.1.2 in order to determine the NLO impulse on particle 1. With the help of these results, we can write down the NLO current of particle 1. Comparison to the quantum calculation is facilitated by resolving this current onto a basis of polarisation vectors and using eq. (6.32) for the momentum radiated. We find,

$$\begin{aligned}\varepsilon^{(h)}\cdot \tilde{J}_1(\bar{k}) &\rightarrow \frac{e^3 Q_1^2 Q_2}{m_1} \int d^4\bar{q}_1 d^4\bar{q}_2 \hat{\delta}(\bar{q}_1\cdot u_1) \hat{\delta}(\bar{q}_2\cdot u_2) \hat{\delta}^{(4)}(\bar{k} - \bar{q}_1 - \bar{q}_2) e^{i\bar{q}_1\cdot b} \frac{1}{\bar{q}_2^2} \\ &\quad \times \left[u_2\cdot \varepsilon^{(h)} - \frac{u_1\cdot u_2 \bar{q}_2\cdot \varepsilon^{(h)}}{\bar{k}\cdot u_1} - \frac{\bar{k}\cdot u_2 u_1\cdot \varepsilon^{(h)}}{\bar{k}\cdot u_1} \right. \\ &\quad \left. + \frac{\bar{k}\cdot \bar{q}_2 u_1\cdot u_2 u_1\cdot \varepsilon^{(h)}}{(\bar{k}\cdot u_1)^2} \right] + \mathcal{O}(e^5).\end{aligned}\tag{6.36}$$

We are now ready to compare this classical result to equation (5.47) for the radiation kernel we encountered in the quantum case. The expressions are proportional, with proportionality constant $e^3 \hbar^2$ (and an irrelevant sign). This factor is precisely provided by the definition of the radiated momentum in terms of the radiation kernel, eq. (4.43). Thus, we see once again that the quantum and classical calculations match—as they must in the classical limit.

The calculation we have described in this subsection is an Abelian version of the non-Abelian calculation of Goldberger and Ridgway [36], which was motivated by the double-copy relation between gauge theory and gravity. The fact that the classical current can be reproduced by taking a limit of a scattering amplitude was pointed out in ref. [67]. Recently, the classical computation was pushed to one higher order in perturbation theory by Shen [40]. It would be interesting to reproduce Shen’s result using the methods of scattering amplitudes.

6.3 Momentum conservation and the radiation reaction force

Finally we turn to conservation of momentum in the classical theory. This is a celebrated problem in classical field theory, where the point particle approximation leads

to well-known issues. Problems arise because of the singular nature of the point particle source. In particular, the electromagnetic field at the position of a point charge is infinite, so to make sense of the Lorentz force acting on the particle the traditional route is to subtract the particle's own field from the full electromagnetic field in the force law. The result is a well-defined force, but conservation of momentum is lost.

Conservation of momentum is restored by including another force, the Abraham-Lorentz-Dirac (ALD) force [48–50], acting on the particles. This gives rise to an impulse on particle 1 in addition to the impulse due to the Lorentz force; the change in the momentum due to the ALD force balances the momentum lost to radiation. The ALD impulse is,

$$\Delta p_1^\mu = \frac{e^2 Q_1^2}{6\pi m_1} \int_{-\infty}^{\infty} d\tau \left(\frac{d^2 p_1^\mu}{d\tau^2} + \frac{p_1^\mu}{m_1^2} \frac{dp_1}{d\tau} \cdot \frac{dp_1}{d\tau} \right). \quad (6.37)$$

To keep our discussion as simple as possible, we again take particle 2 to be static in this section.

Working in perturbation theory, the lowest order contribution to $dp_1/d\tau$ is of order e^2 , due to the LO Lorentz force. Therefore Δp_1^μ is at least of order e^4 . However, this potential contribution to the ALD impulse vanishes. To see this, recall that the LO force on particle 1 is given by eq. (6.12). The acceleration due to this leading order Lorentz force in turn gives rise to an ALD impulse of,

$$\Delta p_1^\mu = \frac{e^4 Q_1^3 Q_2}{6\pi m_1} \int \hat{d}^4 \bar{q} \hat{\delta}(\bar{q} \cdot u_1) \hat{\delta}(\bar{q} \cdot u_2) e^{-i\bar{q} \cdot b} \bar{q} \cdot u_1 \frac{\bar{q}^\mu u_1 \cdot u_2 - u_2^\mu \bar{q} \cdot u_1}{\bar{q}^2} = 0. \quad (6.38)$$

An alternative point of view on the same result is to perform the time integral in equation (6.37), noting that the second term in the ALD force is higher order. The impulse is then proportional to $f^\mu(+\infty) - f^\mu(-\infty)$, the difference in the asymptotic Lorentz forces on particle 1. But at asymptotically large times the two particles are infinitely far away, so the Lorentz forces must vanish. Since this second argument does not rely on perturbation theory we may ignore the first term in the ALD force law in the remainder of the section.

Thus, the first non-vanishing impulse due to radiation reaction is of order e^6 . Since we only need the leading order Lorentz force, eq. (6.12), to evaluate the ALD impulse, we can anticipate that the result will be very simple. Indeed, integrating the ALD force, we find that the impulse on particle 1 due to radiation reaction is

$$\Delta p_1^\mu = \frac{e^6 Q_1^4 Q_2^2}{6\pi m_1^2} u_1^\mu \int \hat{d}^4 \bar{q} \hat{d}^4 \bar{q}' \hat{\delta}(\bar{q} \cdot u_2) \hat{\delta}(\bar{q}' \cdot u_2) \hat{\delta}(u_1 \cdot (\bar{q} - \bar{q}')) e^{-ib \cdot (\bar{q} - \bar{q}')} \frac{1}{\bar{q}^2 \bar{q}'^2} \times [(\bar{q} \cdot u_1)^2 + \bar{q} \cdot \bar{q}' (u_1 \cdot u_2)^2]. \quad (6.39)$$

This is precisely the expression (5.55) we found using our quantum mechanical approach in sect. 5.4. In that case, the simple final result arose after integrating the square of a more complicated five-point tree amplitude over the phase space of the photon.

7 Discussion and conclusions

In order to apply on-shell scattering amplitudes to the calculation of classically observable quantities, one needs a definition of the observables in the quantum theory. One also needs a set of rules and a path for taking the classical limit of the quantum observables. Ideally the rules will be straightforward, simpler to apply than the full quantum calculation, and the path will lead gently downhill.

In this article, we have shown how to construct suitable expressions for two example observables, the momentum transfer or impulse (3.18) on a particle and the momentum emitted as radiation (3.34) during the scattering of two spinless point particles. We have shown how to restore $\hbar s$ and classify momenta in sect. 2; in sect. 4, how to choose suitable wavefunctions for the incoming particles and under what conditions the classical limit is simple. In sect. 4, we further gave simplified leading- and next-to-leading-order expressions in terms of on-shell scattering amplitudes for the impulse in eqs. (4.30) and (4.33), and for the radiated momentum in eq. (4.41). These expressions apply directly to both electrodynamics and gravity. In sect. 5, we used explicit expressions for the amplitudes in quantum electrodynamics to obtain results in the classical theory. We have been careful throughout to ensure that our methods correctly incorporate conservation of momentum, without the need to introduce an analogue of the Abrahams–Lorentz–Dirac radiation reaction.

Other observables should be readily accessible by similar derivations: the same two observables, but for the scattering of spinning particles; the change in spin during scattering; the polarization of emitted radiation; the radiation flux as a function of spherical angle; and more. Higher-order corrections, to the extent they are unambiguously defined in the classical theory, require the harder work of computing two- and higher-loop amplitudes, but the formalism of this article will continue to apply.

Our setup has features in common with two related, but somewhat separate, areas of current interest. One area is the study of the potential between two massive bodies [15–24, 26–28]. The second is the study of particle scattering in the eikonal regime [59–65]. Diagrammatically, the study of the potential is evidently closely related to the impulse of the present article. To some extent this is by design: we wished to construct an on-shell observable related to the potential. But we have also been able to construct an additional observable, the radiated momentum, which is related to the gravitational flux.

It is interesting that classical physics emerges in the study of the high-energy limit of quantum scattering [59], see also ref. [30, 31]. Indeed the classical center-of-momentum scattering angle can be obtained from the eikonal function (see, for example ref. [62]). This latter function must therefore be related as well to the impulse, even though we have not taken any high-energy limit. Indeed, the impulse and the scattering angle are equivalent at LO and NLO, because no momentum is radiated at these orders. Therefore the scattering angle completely determines the change in momentum of the particles (and vice versa). The connection to the eikonal function should be interesting to explore.

At NNLO, on the other hand, the equivalence between the angle and the impulse fails. This is because of radiation: knowledge of the angle tells you where the particles went, but not how fast. In this respect the impulse is more informative than the angle. Eikonal methods are still applicable in the radiative case [60], so they should reproduce the high-energy limit of the expectation value of the radiated momentum. Meanwhile at low energies, methods based on soft theorems could provide a bridge between the impulse and the radiated momentum [47].

The NLO scattering angle is, in fact, somewhat simpler than the impulse: see ref. [64] for example. Thanks to the exponentiation at play in the eikonal limit, it is the triangle diagram which is responsible for the NLO correction. But the impulse contains additional contributions, as we discussed in sect. 5.2. Perhaps this is because the impulse must satisfy an on-shell constraint, unlike the angle.

We restricted attention to spinless scattering in this article. In this context, the impulse (or equivalently, the angle) is the only physical observable at LO and NLO, and completely determines the interaction Hamiltonian between the two particles [30, 31]. The situation is richer in the case of arbitrarily aligned spins: then the change in spins of the particles is an observable which is not determined by the scattering angle. We expect that this observable can also be extracted from scattering amplitudes using our methods.

As in any application of traditional scattering amplitudes, however, time-dependent phenomena are not readily accessible. This reflects the fact that amplitudes are the matrix elements of a time evolution operator from the far past to the far future. For a direct application of our methods to the time-dependent gravitational waveform, we must overcome this limitation. One possible path for future investigation would start from the fact that the two observables we have discussed are essentially expectation values. They are therefore most naturally discussed using the time-dependent in-in formalism, which has a well-known Schwinger–Keldysh diagrammatic formulation. Whether the double copy applies in this context, offering an avenue to simpler calculations in gravity, remains to be explored.

An advantage of our methods is that they naturally incorporate the actual radiated flux, which is obviously a key physical quantity for gravitational wave observatories. The formalism presented in this paper opens the door to applying the many tools and recent advances in the study of scattering amplitudes to computing a variety of observables at higher orders in massless classical field theories. The application of one of these insights, the double copy, to observables in gravity should prove particularly fruitful.

Acknowledgments

We thank Richard Ball, Arjun Berera, Zvi Bern, Lucile Cangemi, John Joseph Carrasco, Clifford Cheung, Maria Derda, Einan Gardi, Grisha Korchemsky, Andrés Luna, Rafael Porto, Justin Vines, and Chris White for helpful discussions and comments. DAK also thanks the Galileo Galilei Institute where this work was completed during the 2018 *Amplitudes in the LHC era* program. This work was supported in part by the French Agence Nationale pour la Recherche, under grant ANR-17-CE31-0001-01. BM is supported by STFC studentship ST/R504737/1. DOC is an IPPP associate, and thanks the IPPP for on-going support as well as for hospitality during this work. He is supported in part by the Marie Curie FP7 grant 631370 and by the STFC consolidated grant Particle Physics at the Higgs Centre.

A Conventions

We have chosen a mostly-minus signature metric. To deal with a proliferation of factors of 2π appearing in measures, we use a short-hand notation first defined in equations (2.3) and (3.2)

$$\hat{\delta}^{(n)}(u) \equiv (2\pi)^n \delta^{(n)}(u) = \int d^n x e^{iu \cdot x}, \quad (\text{A.1})$$

$$\hat{d}^n q \equiv \frac{d^n q}{(2\pi)^n}. \quad (\text{A.2})$$

The measure for integrals over Lorentz-invariant phase space, eq. (3.4), is

$$d\Phi(k_i) \equiv \hat{d}^4 k_i \hat{\delta}^{(+)}(k_i^2 - m_i^2). \quad (\text{A.3})$$

We occasionally find it convenient to separate a Lorentz vector x^μ into its time component x^0 and its three spatial components \mathbf{x} so that $x^\mu = (x^0, x^i) = (x^0, \mathbf{x})$ (where $i = 1, 2, 3$.)

Our convention for Fourier transforms, eq. (6.9), is

$$f(x) = \int \hat{d}^4 \bar{q} \tilde{f}(\bar{q}) e^{-i\bar{q}\cdot x}, \quad (\text{A.4})$$

$$\tilde{f}(\bar{q}) = \int d^4 x f(x) e^{i\bar{q}\cdot x}. \quad (\text{A.5})$$

B Linear Wavefunction Integrals

In order to compute the wavefunction normalization in eq. (4.18), we must compute the following integral,

$$m^{-2} \int d\Phi(p) \exp\left[-\frac{2p\cdot u}{m\xi}\right]. \quad (\text{B.1})$$

Let us introduce the following parametrization for the on-shell phase space,

$$p^\mu = E(\cosh \zeta, \sinh \zeta \sin \theta \cos \phi, \sinh \zeta \sin \theta \sin \phi, \sinh \zeta \cos \theta), \quad (\text{B.2})$$

so that,

$$\begin{aligned} d\Phi(p) &= (2\pi)^{-3} \hat{d}E d\zeta d\Omega_2 \hat{\delta}(E^2 - m^2) \Theta(E) E^3 \sinh^2 \zeta \\ &= (2\pi)^{-3} \hat{d}E d\zeta d\theta d\phi \hat{\delta}(E^2 - m^2) \Theta(E) E^3 \sinh^2 \zeta \sin \theta, \end{aligned} \quad (\text{B.3})$$

with ζ running over $[0, \infty]$, θ over $[0, \pi]$, and ϕ over $[0, 2\pi]$. Performing the E integration, we obtain,

$$d\Phi(p) \rightarrow \frac{m^2}{2(2\pi)^3} d\zeta d\theta d\phi \sinh^2 \zeta \sin \theta, \quad (\text{B.4})$$

along with $E = m$ in the integrand. The integral must be a Lorentz-invariant function of u ; as the only available Lorentz invariant is $u^2 = 1$, we conclude that the result must be a function of ξ alone. We can compute it in the rest frame of u , where our desired integral is,

$$\frac{1}{2(2\pi)^3} \int_0^\infty d\zeta \sinh^2 \zeta \int_0^\pi d\theta \sin \theta \int_0^{2\pi} d\phi \exp\left[-2\frac{\cosh \zeta}{\xi}\right] = \frac{1}{2(2\pi)^2} \xi K_1(2/\xi), \quad (\text{B.5})$$

where K_1 is a modified Bessel function of the second kind. The normalization condition (3.12) then yields,

$$\frac{2\sqrt{2}\pi}{\xi^{1/2} K_1^{1/2}(2/\xi)}, \quad (\text{B.6})$$

for the wavefunction's normalization.

Next, we compute $\langle p^\mu \rangle$. Lorentz invariance implies that the expectation value must be proportional to u^μ ; again computing in the rest frame, we find that,

$$\langle p^\mu \rangle = m u^\mu \frac{K_2(2/\xi)}{K_1(2/\xi)}. \quad (\text{B.7})$$

The phase-space measure fixes $\langle p^2 \rangle = m^2$, so we conclude that,

$$\begin{aligned} \frac{\langle (\Delta p)^2 \rangle}{\langle p^2 \rangle} &= 1 - \frac{\langle p \rangle^2}{\langle p^2 \rangle} \\ &= 1 - \frac{K_2^2(2/\xi)}{K_1^2(2/\xi)} \\ &= -\frac{3}{2}\xi + \mathcal{O}(\xi^2). \end{aligned} \quad (\text{B.8})$$

We must further evaluate an integral with an on-shell delta function,

$$T(\bar{q}) = \frac{\mathcal{N}^2}{\hbar m^3} \exp\left[-\frac{\hbar \bar{q} \cdot u}{m\xi}\right] \int d\Phi(p) \hat{\delta}(2p \cdot \bar{q}/m + \hbar \bar{q}^2/m) \exp\left[-\frac{2p \cdot u}{m\xi}\right]. \quad (\text{B.9})$$

This integral is dimensionless, and can depend only on two Lorentz invariants, $\bar{q} \cdot u$ and \bar{q}^2 , along with ξ . It is convenient to write it as a function of two dimensionless variables built out of these invariants,

$$\begin{aligned} \omega &\equiv \frac{\bar{q} \cdot u}{\sqrt{-\bar{q}^2}}, \\ \tau &\equiv \frac{\hbar \sqrt{-\bar{q}^2}}{2m}. \end{aligned} \quad (\text{B.10})$$

We again work in the rest frame of u^μ , and without loss of generality, choose the z -axis of the p integration to lie along the direction of \bar{q} . The only components that appear in the integral are then \bar{q}^0 and \bar{q}^z ; after integration, we can obtain the dependence on τ and ω via the replacements,

$$\begin{aligned} \bar{q}^0 &\rightarrow \frac{2m\omega\tau}{\hbar}, \\ \bar{q}^z &\rightarrow \frac{2m\sqrt{1+\omega^2}\tau}{\hbar}; \end{aligned} \quad (\text{B.11})$$

and hence,

$$-\bar{q}^2 \rightarrow \frac{4m^2\tau^2}{\hbar^2}. \quad (\text{B.12})$$

Using the measure (B.4), we find,

$$\begin{aligned} &\frac{1}{2\pi \hbar m \xi K_1(2/\xi)} \exp\left[-\frac{\hbar \bar{q}^0}{m\xi}\right] \\ &\quad \times \int_0^\infty d\zeta \sinh^2 \zeta \int_0^\pi d\theta \sin \theta \int_0^{2\pi} d\phi \exp\left[-2\frac{\cosh \zeta}{\xi}\right] \\ &\quad \times \hat{\delta}(2\bar{q}^0 \cosh \zeta - 2\bar{q}^z \sinh \zeta \cos \theta + \hbar \bar{q}^2/m). \end{aligned} \quad (\text{B.13})$$

The ϕ integral is trivial, and we can use the delta function to do the θ integral,

$$\begin{aligned} \frac{1}{2\hbar m \bar{q}^z \xi K_1(2/\xi)} \exp\left[-\frac{\hbar \bar{q}^0}{m\xi}\right] \int_0^\infty d\zeta \sinh \zeta \exp\left[-2\frac{\cosh \zeta}{\xi}\right] \\ \times \Theta\left(1 + \bar{q}^0 \coth \zeta / \bar{q}^z + \hbar \bar{q}^2 \operatorname{csch} \zeta / (2m\bar{q}^z)\right) \\ \times \Theta\left(1 - \bar{q}^0 \coth \zeta / \bar{q}^z - \hbar \bar{q}^2 \operatorname{csch} \zeta / (2m\bar{q}^z)\right). \end{aligned} \quad (\text{B.14})$$

In the $\hbar \rightarrow 0$ limit, the first theta function will have no effect, even with $\bar{q}^2 < 0$. Changing variables to $w = \cosh \zeta$, the second theta function will impose the constraint,

$$w \geq \frac{\bar{q}^z \sqrt{1 - \hbar^2 \bar{q}^2 / (4m^2)}}{\sqrt{-\bar{q}^2}} - \frac{\hbar \bar{q}^0}{2m}. \quad (\text{B.15})$$

In terms of ω and τ , this constraint is,

$$w \geq \sqrt{1 + \omega^2} \sqrt{1 + \tau^2} - \omega \tau. \quad (\text{B.16})$$

Up to corrections of $\mathcal{O}(\hbar)$, the right-hand side is greater than 1, and so becomes the lower limit of integration. The result for the integral is then,

$$\begin{aligned} T(\bar{q}) &= \frac{1}{8m^2 \sqrt{1 + \omega^2} \tau K_1(2/\xi)} \exp\left[-2\frac{\omega \tau}{\xi}\right] \exp\left[-\frac{2}{\xi} \left(\sqrt{1 + \omega^2} \sqrt{1 + \tau^2} - \omega \tau\right)\right] \\ &= \frac{1}{4\hbar m \sqrt{(\bar{q} \cdot u)^2 - \bar{q}^2} K_1(2/\xi)} \exp\left[-\frac{2}{\xi} \frac{\sqrt{(\bar{q} \cdot u)^2 - \bar{q}^2}}{\sqrt{-\bar{q}^2}} \sqrt{1 - \hbar^2 \bar{q}^2 / (4m^2)}\right]. \end{aligned} \quad (\text{B.17})$$

How does this function behave in the $\hbar, \xi \rightarrow 0$ limit (with \bar{q} fixed)? The Bessel function simplifies,

$$\frac{1}{K_1(2/\xi)} \sim \frac{2}{\sqrt{\pi} \sqrt{\xi}} \exp\left[\frac{2}{\xi}\right], \quad (\text{B.18})$$

so we must take into account a modification of the exponent. In the limit, $\sqrt{\xi} \sim \hbar$, so that $\hbar \sqrt{\xi} \sim \xi$, and T has the form shown in eq. (4.27),

$$\frac{1}{\xi} \exp\left[-\frac{f(\bar{q})}{\xi}\right], \quad (\text{B.19})$$

which will yield a delta function so long as $f(\bar{q})$ is positive. To figure out its argument, recall that $\bar{q}^2 < 0$, and use a parametrization analogous that in eq. (B.2),

$$\bar{q}^\mu = E_{\bar{q}}(\sinh \zeta, \cosh \zeta \sin \theta \cos \phi, \cosh \zeta \sin \theta \sin \phi, \cosh \zeta \cos \theta), \quad (\text{B.20})$$

so that again working in the rest frame of u^μ , the exponent in eq. (B.17) (including the term from eq. (B.18)) is,

$$-\frac{2}{\xi} \left(\cosh \zeta \sqrt{1 + \hbar^2 E_{\bar{q}}^2 / (4m^2)} - 1 \right), \quad (\text{B.21})$$

so that the delta function will ultimately localize

$$\cosh \zeta \rightarrow \frac{1}{\sqrt{1 + \hbar^2 E_{\bar{q}}^2 / (4m^2)}} = 1 - \frac{\hbar^2 E_{\bar{q}}^2}{8m^2} + \mathcal{O}(\hbar^4), \quad (\text{B.22})$$

or translating back to Lorentz-invariant expressions, localize

$$\bar{q} \cdot u + \frac{\hbar^2}{8m^2} \bar{q} \cdot u \bar{q}^2 \quad (\text{B.23})$$

to zero.

C Angular integrals

In sect. 5.4 we encountered an integral over the on-shell phase space of a photon, namely eq. (5.53) which we reproduce here for ease of discussion:

$$Y_r^\mu = \int d\Phi(\bar{k}) \hat{\delta}(u_1 \cdot \bar{k} - \bar{E}) \bar{k}^\mu \left[1 + \frac{(u_1 \cdot u_2)^2 (\bar{q} \cdot \bar{q}')}{\bar{E}^2} + \frac{(u_2 \cdot \bar{k})^2}{\bar{E}^2} - \frac{(u_1 \cdot u_2)(u_2 \cdot \bar{k}) \bar{k} \cdot (\bar{q} + \bar{q}')}{\bar{E}^3} + \frac{(u_1 \cdot u_2)^2 (\bar{k} \cdot \bar{q})(\bar{k} \cdot \bar{q}')}{\bar{E}^4} \right]. \quad (\text{C.1})$$

In this appendix we will perform the integral over \bar{k} . We begin by defining

$$y_0 \equiv \int d\Phi(\bar{k}) \hat{\delta}(u_1 \cdot \bar{k} - \bar{E}), \quad (\text{C.2})$$

$$y_1^\mu \equiv \int d\Phi(\bar{k}) \hat{\delta}(u_1 \cdot \bar{k} - \bar{E}) \bar{k}^\mu, \quad (\text{C.3})$$

$$y_2^{\mu\nu} \equiv \int d\Phi(\bar{k}) \hat{\delta}(u_1 \cdot \bar{k} - \bar{E}) \bar{k}^\mu \bar{k}^\nu, \quad (\text{C.4})$$

$$y_3^{\mu\nu\rho} \equiv \int d\Phi(\bar{k}) \hat{\delta}(u_1 \cdot \bar{k} - \bar{E}) \bar{k}^\mu \bar{k}^\nu \bar{k}^\rho. \quad (\text{C.5})$$

We may then write

$$Y_r^\mu = \left(1 + \frac{(u_1 \cdot u_2)^2 (\bar{q} \cdot \bar{q}')}{\bar{E}^2} \right) y_1^\mu + \left(\frac{u_{2\nu} u_{2\rho}}{\bar{E}^2} - \frac{(u_1 \cdot u_2) u_{2\nu} (\bar{q}_\rho + \bar{q}'_\rho)}{\bar{E}^3} + \frac{(u_1 \cdot u_2)^2 \bar{q}_\nu \bar{q}'_\rho}{\bar{E}^4} \right) y_3^{\mu\nu\rho}. \quad (\text{C.6})$$

Thus we need to know the integrals y_1^μ and $y_3^{\mu\nu\rho}$. It is also convenient to compute y_0 , but we will omit the calculation of y_2 .

We begin by computing y_0 : as we will see, this integral appears in the evaluation of the rest. It is convenient to work in the frame where particle 1 is stationary, so $u_1^\mu = (1, \mathbf{0})$. Then we can write

$$y_0 = \frac{1}{(2\pi)^2} \int_{-\infty}^{\infty} d\bar{k}^0 \int_0^{\infty} d\bar{\lambda} \bar{\lambda}^2 \int d\Omega_2 \Theta(\bar{k}^0) \delta(\bar{k}^0 - \bar{E}) \delta((\bar{k}^0)^2 - \bar{\lambda}^2), \quad (\text{C.7})$$

where $\lambda = |\mathbf{k}|$. Each integral is straightforward. The integral over solid angle $d\Omega_2$ evaluates to 4π ; we perform the \bar{k}^0 integral using the first delta function to discover a factor $\Theta(\bar{E})$, and finally we use the second delta function to perform the \bar{k} integral. The result is

$$y_0 = \frac{\bar{E}}{2\pi} \Theta(\bar{E}). \quad (\text{C.8})$$

To evaluate y_1^μ , we exploit Lorentz covariance which dictates that

$$y_1^\mu = \int d\Phi(\bar{k}) \hat{\delta}(u_1 \cdot \bar{k} - \bar{E}) \bar{k}^\mu = a_1 u_1^\mu, \quad (\text{C.9})$$

where a_1 is a scalar factor to be determined. In fact it is trivial to compute a_1 by dotting this expression into u_1 ; then the delta function enforces $a_1 = y_1 \cdot u_1 = \bar{E} y_0$, so that

$$y_1^\mu = \frac{\bar{E}^2}{2\pi} u_1^\mu \Theta(\bar{E}). \quad (\text{C.10})$$

In the same manner, Lorentz covariance and the symmetries of the integral require that,

$$y_3^{\mu\nu\rho} = a_3 u_1^\mu u_1^\nu u_1^\rho + b_3 (u_1^\mu \eta^{\nu\rho} + u_1^\nu \eta^{\mu\rho} + u_1^\rho \eta^{\mu\nu}), \quad (\text{C.11})$$

in terms of scalar factors a_3 and b_3 which we must determine. To do so, we contract $y_3^{\mu\nu\rho}$ with $u_{1\mu} u_{1\nu} u_{1\rho}$ and with $\eta_{\mu\nu} u_1^\rho$ to develop simultaneous equations for a_3 and b_3 :

$$u_{1\mu} u_{1\nu} u_{1\rho} y_3^{\mu\nu\rho} = a_3 + 3b_3 = \bar{E}^3 y_0, \quad (\text{C.12})$$

$$\eta_{\mu\nu} u_{1\rho} y_3^{\mu\nu\rho} = a_3 + 6b_3 = 0. \quad (\text{C.13})$$

As this system has the solution $a = \frac{\bar{E}^4}{\pi} \Theta(\bar{E})$ and $b = -\frac{\bar{E}^4}{6\pi} \Theta(\bar{E})$, we learn that

$$y_3^{\mu\nu\rho} = \frac{\bar{E}^4}{\pi} \left(u_1^\mu u_1^\nu u_1^\rho - \frac{1}{6} (u_1^\mu \eta^{\nu\rho} + u_1^\nu \eta^{\mu\rho} + u_1^\rho \eta^{\mu\nu}) \right) \Theta(\bar{E}). \quad (\text{C.14})$$

D An Alternative Classical Point of View on Momentum Radiation

In the main text, we provided a classical derivation of a formula for the momentum radiated in electrodynamics. The result, eq. (6.32), was

$$K^\mu = - \int d\Phi(\bar{k}) \bar{k}^\mu \tilde{J}^\nu(\bar{k}) \tilde{J}_\nu^*(\bar{k}). \quad (\text{D.1})$$

The derivation maintained covariance, but involved a rather indirect extraction of the radiation field. In this appendix, we will derive the same formula from a somewhat simpler point of view, using textbook methods (see, for example, [69]).

We begin as in section 6.2.1 with the observation that the momentum radiated can be obtained by integrating the stress-energy tensor over the surfaces of large two-dimensional spheres, and over all time:

$$K^\mu = \lim_{|\mathbf{x}| \rightarrow \infty} \int_{-\infty}^{\infty} dt \int d\Omega_2 |\mathbf{x}|^2 n_\nu T^{\mu\nu}(x), \quad (\text{D.2})$$

where $n \cdot e_r = 1$ and e_r is the unit radial outgoing vector on the spheres. To evaluate this integral, we need an expression for the gauge field $A^\mu(x)$. Working in Lorenz gauge, this can be obtained by solving the Maxwell equation using a Green's function $G(x)$:

$$A^\mu(x) = \int d^4x' G(x - x') J^\mu(x'). \quad (\text{D.3})$$

In our situation, we assume that there is no incoming radiation, so the appropriate choice is the retarded Green's function $G_{\text{ret}}(x)$ which is explicitly

$$G_{\text{ret}}(x) = \frac{1}{2\pi} \Theta(x^0) \delta(x^2) = \frac{1}{4\pi|\mathbf{x}|} \delta(x^0 - |\mathbf{x}|), \quad (\text{D.4})$$

where $x^\mu = (t, \mathbf{x})$. As we will see, it is useful to Fourier transform $A^\mu(x)$ in the time dimension alone. We write,

$$\begin{aligned} A^\mu(\omega, \mathbf{x}) &\equiv \int dt e^{i\omega t} A^\mu(t, \mathbf{x}) \\ &= \int dt' d^3x' \frac{e^{i\omega t'} e^{i\omega|\mathbf{x}-\mathbf{x}'|}}{4\pi|\mathbf{x}-\mathbf{x}'|} J^\mu(t', \mathbf{x}') \\ &= \frac{1}{4\pi} \int d^3x' \frac{e^{i\omega|\mathbf{x}-\mathbf{x}'|}}{|\mathbf{x}-\mathbf{x}'|} J^\mu(\omega, \mathbf{x}'). \end{aligned} \quad (\text{D.5})$$

This is an exact expression for the gauge field. However, we only need to know the gauge field on the surface of spheres surrounding our interacting particles, with radii very large compared to the separation of the particles. So we can expand the fields at large $|\mathbf{x}|$. In particular, the \mathbf{x}' integral in (D.5) extends only over the spatial support of the source $J^\mu(t', \mathbf{x}')$. We assume that radii of the spheres is always very large compared to this spatial size (which in our application will be of order b). We can therefore assume that $|\mathbf{x}'|/|\mathbf{x}| \ll 1$.

Some care needs to be taken in the expansion of equation (D.5), however, since another length scale appears in the problem. This is the wavelength λ of the radiation,

of order $1/\omega$. This wavelength need not be of order b , and in particular the quantity $\omega|\mathbf{x}'| \sim |\mathbf{x}'|/\lambda$ need not be small. We therefore expand the field as

$$A^\mu(\omega, \mathbf{x}) \simeq \frac{e^{i\omega|\mathbf{x}|}}{4\pi|\mathbf{x}|} \int d^3x' e^{-i\omega \hat{\mathbf{x}} \cdot \mathbf{x}'} J^\mu(\omega, \mathbf{x}'), \quad (\text{D.6})$$

where $\hat{\mathbf{x}} = \mathbf{x}/|\mathbf{x}|$ is a unit three-dimensional vector. Defining the wavevector $\bar{\mathbf{k}} = \omega \hat{\mathbf{x}}$, can recognise the spatial Fourier transform present in eq. (D.6), and learn that

$$A^\mu(\omega, \mathbf{x}) \simeq \frac{e^{i\omega|\mathbf{x}|}}{4\pi|\mathbf{x}|} J^\mu(\omega, \bar{\mathbf{k}}) = \frac{e^{i\omega|\mathbf{x}|}}{4\pi|\mathbf{x}|} \tilde{J}^\mu(\bar{\mathbf{k}}), \quad (\text{D.7})$$

where $\bar{k}^\mu = (\omega, \mathbf{k})$. Note that $\bar{k} \cdot \bar{k} = 0$. For later use, we remark that

$$A^\mu(-\omega, \mathbf{x}) = \frac{e^{-i\omega|\mathbf{x}|}}{4\pi|\mathbf{x}|} \tilde{J}^\mu(-\bar{\mathbf{k}}). \quad (\text{D.8})$$

It is straightforward to obtain the field strength $F^{\mu\nu}$ from our gauge field. Neglecting terms which are subdominant at large distances, we find that

$$\begin{aligned} F^{\mu\nu}(x) &\equiv \int \frac{d\omega}{2\pi} e^{-i\omega t} F^{\mu\nu}(\omega, \mathbf{x}) \\ &= -i \int \frac{d\omega}{2\pi} e^{-i\omega t} (\bar{k}^\mu A^\nu(\omega, \mathbf{x}) - \bar{k}^\nu A^\mu(\omega, \mathbf{x})). \end{aligned} \quad (\text{D.9})$$

It is also worth noting that $\bar{k}_\mu A^\mu(\omega, \mathbf{x}) = 0$ as a consequence of current conservation.

We now return to the momentum radiated. We first trade the time integral of the stress-energy tensor for a frequency integral:

$$\begin{aligned} &\int_{-\infty}^{\infty} dt \left(F^{\mu\alpha}(x) F_{\alpha}{}^{\nu}(x) + \frac{1}{4} \eta^{\mu\nu} F^{\alpha\beta}(x) F_{\alpha\beta}(x) \right) \\ &= \int \frac{d\omega}{2\pi} \int_{-\infty}^{\infty} dt e^{-i\omega t} \left(F^{\mu\alpha}(\omega, \mathbf{x}) F_{\alpha}{}^{\nu}(t, \mathbf{x}) + \frac{1}{4} \eta^{\mu\nu} F^{\alpha\beta}(\omega, \mathbf{x}) F_{\alpha\beta}(t, \mathbf{x}) \right) \\ &= \int \frac{d\omega}{2\pi} \left(F^{\mu\alpha}(\omega, \mathbf{x}) F_{\alpha}{}^{\nu}(-\omega, \mathbf{x}) + \frac{1}{4} \eta^{\mu\nu} F^{\alpha\beta}(\omega, \mathbf{x}) F_{\alpha\beta}(-\omega, \mathbf{x}) \right) \\ &= \int \frac{d\omega}{2\pi} \bar{k}^\mu \bar{k}^\nu A^\alpha(\omega, \mathbf{x}) A_\alpha(-\omega, \mathbf{x}). \end{aligned} \quad (\text{D.10})$$

Armed with these results, it is an easy matter to complete the derivation. The momen-

tum radiated is

$$\begin{aligned}
K^\mu &= \lim_{|\mathbf{x}| \rightarrow \infty} \int \frac{d\omega}{2\pi} \int d\Omega_2 |\mathbf{x}|^2 n_\nu \bar{k}^\mu \bar{k}^\nu A^\alpha(\omega, \mathbf{x}) A_\alpha(-\omega, \mathbf{x}) \\
&= -\frac{1}{(2\pi)^3} \int_0^\infty d\omega \omega^2 \int d\Omega_2 \frac{1}{2\omega} \bar{k}^\mu \tilde{J}^\alpha(\bar{k}) \tilde{J}_\alpha(-\bar{k}) \\
&= -\frac{1}{(2\pi)^3} \int d^3\bar{k} d\bar{k}^0 \frac{\delta(\bar{k}^0 - |\bar{\mathbf{k}}|)}{2|\bar{\mathbf{k}}|} \bar{k}^\mu \tilde{J}^\alpha(\bar{k}) \tilde{J}_\alpha(-\bar{k}) \\
&= -\int d\Phi(\bar{k}) \bar{k}^\mu \tilde{J}^\alpha(\bar{k}) \tilde{J}_\alpha^*(\bar{k}),
\end{aligned} \tag{D.11}$$

as expected. In this derivation, we lost manifest Lorentz invariance during the calculation, but we were able to restore it at the end because the observable of interest is Lorentz invariant.

References

- [1] B. P. Abbott *et al.* [LIGO Scientific and Virgo Collaborations], Phys. Rev. Lett. **116**, no. 6, 061102 (2016) doi:10.1103/PhysRevLett.116.061102 [arXiv:1602.03837 [gr-qc]]; Phys. Rev. Lett. **116**, no. 24, 241103 (2016) doi:10.1103/PhysRevLett.116.241103 [arXiv:1606.04855 [gr-qc]]; Phys. Rev. Lett. **118**, no. 22, 221101 (2017) doi:10.1103/PhysRevLett.118.221101 [arXiv:1706.01812 [gr-qc]]; Phys. Rev. Lett. **119**, no. 14, 141101 (2017) doi:10.1103/PhysRevLett.119.141101 [arXiv:1709.09660 [gr-qc]]; Phys. Rev. Lett. **119**, no. 16, 161101 (2017) doi:10.1103/PhysRevLett.119.161101 [arXiv:1710.05832 [gr-qc]].
- [2] A. Buonanno and B. S. Sathyaprakash, arXiv:1410.7832 [gr-qc].
- [3] R. Arnowitt and S. Deser, Phys. Rev. **113**, 745 (1959) doi:10.1103/PhysRev.113.745; R. L. Arnowitt, S. Deser and C. W. Misner, Phys. Rev. **116**, 1322 (1959) doi:10.1103/PhysRev.116.1322; R. L. Arnowitt, S. Deser and C. W. Misner, Phys. Rev. **117**, 1595 (1960) doi:10.1103/PhysRev.117.1595; R. L. Arnowitt, S. Deser and C. W. Misner, Gen. Rel. Grav. **40**, 1997 (2008) doi:10.1007/s10714-008-0661-1 [gr-qc/0405109].
- [4] G. Schäfer and P. Jaranowski, Living Rev. Rel. **21**, no. 1, 7 (2018) doi:10.1007/s41114-018-0016-5 [arXiv:1805.07240 [gr-qc]].
- [5] L. Blanchet, Living Rev. Rel. **17**, 2 (2014) doi:10.12942/lrr-2014-2 [arXiv:1310.1528 [gr-qc]].
- [6] A. Buonanno and T. Damour, Phys. Rev. D **59**, 084006 (1999) doi:10.1103/PhysRevD.59.084006 [gr-qc/9811091]; A. Buonanno and T. Damour, Phys. Rev. D **62**, 064015 (2000) doi:10.1103/PhysRevD.62.064015 [gr-qc/0001013].

- [7] T. Damour, Phys. Rev. D **64**, 124013 (2001) doi:10.1103/PhysRevD.64.124013 [gr-qc/0103018]; T. Damour, P. Jaranowski and G. Schafer, Phys. Rev. D **62**, 084011 (2000) doi:10.1103/PhysRevD.62.084011 [gr-qc/0005034].
- [8] F. Pretorius, Phys. Rev. Lett. **95**, 121101 (2005) doi:10.1103/PhysRevLett.95.121101 [gr-qc/0507014]; F. Pretorius, arXiv:0710.1338 [gr-qc].
- [9] W. D. Goldberger and I. Z. Rothstein, Phys. Rev. D **73**, 104029 (2006) doi:10.1103/PhysRevD.73.104029 [hep-th/0409156].
- [10] R. A. Porto, Phys. Rept. **633**, 1 (2016) doi:10.1016/j.physrep.2016.04.003 [arXiv:1601.04914 [hep-th]]; M. Levi, arXiv:1807.01699 [hep-th].
- [11] W. D. Goldberger and I. Z. Rothstein, Phys. Rev. D **73**, 104030 (2006) doi:10.1103/PhysRevD.73.104030 [hep-th/0511133]; W. D. Goldberger and I. Z. Rothstein, Gen. Rel. Grav. **38**, 1537 (2006) [Int. J. Mod. Phys. D **15**, 2293 (2006)] doi:10.1007/s10714-006-0345-7, 10.1142/S0218271806009698 [hep-th/0605238]; R. A. Porto, Phys. Rev. D **73**, 104031 (2006) doi:10.1103/PhysRevD.73.104031 [gr-qc/0511061]; R. A. Porto and I. Z. Rothstein, Phys. Rev. Lett. **97**, 021101 (2006) doi:10.1103/PhysRevLett.97.021101 [gr-qc/0604099]; R. A. Porto, Phys. Rev. D **77**, 064026 (2008) doi:10.1103/PhysRevD.77.064026 [arXiv:0710.5150 [hep-th]]; R. A. Porto and I. Z. Rothstein, arXiv:0712.2032 [gr-qc]; B. Kol and M. Smolkin, Class. Quant. Grav. **25**, 145011 (2008) doi:10.1088/0264-9381/25/14/145011 [arXiv:0712.4116 [hep-th]]; C. R. Galley and B. L. Hu, Phys. Rev. D **79**, 064002 (2009) doi:10.1103/PhysRevD.79.064002 [arXiv:0801.0900 [gr-qc]]; R. A. Porto and I. Z. Rothstein, Phys. Rev. D **78**, 044012 (2008) Erratum: [Phys. Rev. D **81**, 029904 (2010)] doi:10.1103/PhysRevD.78.044012, 10.1103/PhysRevD.81.029904 [arXiv:0802.0720 [gr-qc]]; M. Levi, Phys. Rev. D **82**, 064029 (2010) doi:10.1103/PhysRevD.82.064029 [arXiv:0802.1508 [gr-qc]]. B. Kol, Gen. Rel. Grav. **40**, 2061 (2008) [Int. J. Mod. Phys. D **17**, 2617 (2009)] doi:10.1007/s10714-008-0673-x, 10.1142/S0218271808014151 [arXiv:0804.0187 [hep-th]].
- [12] R. A. Porto and I. Z. Rothstein, Phys. Rev. D **78**, 044013 (2008) Erratum: [Phys. Rev. D **81**, 029905 (2010)] doi:10.1103/PhysRevD.81.029905, 10.1103/PhysRevD.78.044013 [arXiv:0804.0260 [gr-qc]]; J. B. Gilmore and A. Ross, Phys. Rev. D **78**, 124021 (2008) doi:10.1103/PhysRevD.78.124021 [arXiv:0810.1328 [gr-qc]]; Y. Z. Chu, Phys. Rev. D **79**, 044031 (2009) doi:10.1103/PhysRevD.79.044031 [arXiv:0812.0012 [gr-qc]]; W. D. Goldberger and A. Ross, Phys. Rev. D **81**, 124015 (2010) doi:10.1103/PhysRevD.81.124015 [arXiv:0912.4254 [gr-qc]]; C. R. Galley and M. Tiglio, Phys. Rev. D **79**, 124027 (2009) doi:10.1103/PhysRevD.79.124027 [arXiv:0903.1122 [gr-qc]]; B. Kol and M. Smolkin, Phys. Rev. D **80**, 124044 (2009) doi:10.1103/PhysRevD.80.124044 [arXiv:0910.5222 [hep-th]]; R. A. Porto, Class. Quant. Grav. **27**, 205001 (2010) doi:10.1088/0264-9381/27/20/205001 [arXiv:1005.5730

- [gr-qc]; M. Levi, Phys. Rev. D **82**, 104004 (2010) doi:10.1103/PhysRevD.82.104004 [arXiv:1006.4139 [gr-qc]]; R. A. Porto, A. Ross and I. Z. Rothstein, JCAP **1103**, 009 (2011) doi:10.1088/1475-7516/2011/03/009 [arXiv:1007.1312 [gr-qc]]; B. Kol, M. Levi and M. Smolkin, Class. Quant. Grav. **28**, 145021 (2011) doi:10.1088/0264-9381/28/14/145021 [arXiv:1011.6024 [gr-qc]]; S. Foffa and R. Sturani, Phys. Rev. D **84**, 044031 (2011) doi:10.1103/PhysRevD.84.044031 [arXiv:1104.1122 [gr-qc]]; M. Levi, Phys. Rev. D **85**, 064043 (2012) doi:10.1103/PhysRevD.85.064043 [arXiv:1107.4322 [gr-qc]].
- [13] S. Hergt, J. Steinhoff and G. Schaefer, Annals Phys. **327**, 1494 (2012) doi:10.1016/j.aop.2012.02.006 [arXiv:1110.2094 [gr-qc]]; S. Foffa and R. Sturani, Phys. Rev. D **87**, no. 4, 044056 (2013) doi:10.1103/PhysRevD.87.044056 [arXiv:1111.5488 [gr-qc]]; A. Ross, Phys. Rev. D **85**, 125033 (2012) doi:10.1103/PhysRevD.85.125033 [arXiv:1202.4750 [gr-qc]]; R. A. Porto, A. Ross and I. Z. Rothstein, JCAP **1209**, 028 (2012) doi:10.1088/1475-7516/2012/09/028 [arXiv:1203.2962 [gr-qc]]; C. R. Galley and A. K. Leibovich, Phys. Rev. D **86**, 044029 (2012) doi:10.1103/PhysRevD.86.044029 [arXiv:1205.3842 [gr-qc]]; W. D. Goldberger, A. Ross and I. Z. Rothstein, Phys. Rev. D **89**, no. 12, 124033 (2014) doi:10.1103/PhysRevD.89.124033 [arXiv:1211.6095 [hep-th]]; C. R. Galley and R. A. Porto, JHEP **1311**, 096 (2013) doi:10.1007/JHEP11(2013)096 [arXiv:1302.4486 [gr-qc]]; O. Birnholtz, S. Hadar and B. Kol, Phys. Rev. D **88**, no. 10, 104037 (2013) doi:10.1103/PhysRevD.88.104037 [arXiv:1305.6930 [hep-th]]; S. Chakrabarti, T. Delsate and J. Steinhoff, Phys. Rev. D **88**, 084038 (2013) doi:10.1103/PhysRevD.88.084038 [arXiv:1306.5820 [gr-qc]]; S. Foffa and R. Sturani, Class. Quant. Grav. **31**, no. 4, 043001 (2014) doi:10.1088/0264-9381/31/4/043001 [arXiv:1309.3474 [gr-qc]]; S. Foffa, Phys. Rev. D **89**, no. 2, 024019 (2014) doi:10.1103/PhysRevD.89.024019 [arXiv:1309.3956 [gr-qc]]; M. Levi and J. Steinhoff, JCAP **1412**, no. 12, 003 (2014) doi:10.1088/1475-7516/2014/12/003 [arXiv:1408.5762 [gr-qc]].
- [14] M. Levi and J. Steinhoff, JHEP **1506**, 059 (2015) doi:10.1007/JHEP06(2015)059 [arXiv:1410.2601 [gr-qc]]; M. Levi and J. Steinhoff, JHEP **1509**, 219 (2015) doi:10.1007/JHEP09(2015)219 [arXiv:1501.04956 [gr-qc]]; M. Levi and J. Steinhoff, JCAP **1601**, 011 (2016) doi:10.1088/1475-7516/2016/01/011 [arXiv:1506.05056 [gr-qc]]; M. Levi and J. Steinhoff, JCAP **1601**, 008 (2016) doi:10.1088/1475-7516/2016/01/008 [arXiv:1506.05794 [gr-qc]]; C. R. Galley, A. K. Leibovich, R. A. Porto and A. Ross, Phys. Rev. D **93**, 124010 (2016) doi:10.1103/PhysRevD.93.124010 [arXiv:1511.07379 [gr-qc]]; M. Levi and J. Steinhoff, arXiv:1607.04252 [gr-qc]; S. Foffa, P. Mastrolia, R. Sturani and C. Sturm, Phys. Rev. D **95**, no. 10, 104009 (2017) doi:10.1103/PhysRevD.95.104009 [arXiv:1612.00482 [gr-qc]]; R. A. Porto and I. Z. Rothstein, Phys. Rev. D **96**, no. 2, 024062 (2017) doi:10.1103/PhysRevD.96.024062 [arXiv:1703.06433 [gr-qc]]; R. A. Porto, Phys. Rev. D

- 96**, no. 2, 024063 (2017) doi:10.1103/PhysRevD.96.024063 [arXiv:1703.06434 [gr-qc]]; M. Levi and J. Steinhoff, *Class. Quant. Grav.* **34**, no. 24, 244001 (2017) doi:10.1088/1361-6382/aa941e [arXiv:1705.06309 [gr-qc]]; N. T. Maia, C. R. Galley, A. K. Leibovich and R. A. Porto, *Phys. Rev. D* **96**, no. 8, 084064 (2017) doi:10.1103/PhysRevD.96.084064 [arXiv:1705.07934 [gr-qc]]; N. T. Maia, C. R. Galley, A. K. Leibovich and R. A. Porto, *Phys. Rev. D* **96**, no. 8, 084065 (2017) doi:10.1103/PhysRevD.96.084065 [arXiv:1705.07938 [gr-qc]].
- [15] D. Neill and I. Z. Rothstein, *Nucl. Phys. B* **877**, 177 (2013) doi:10.1016/j.nuclphysb.2013.09.007 [arXiv:1304.7263 [hep-th]].
- [16] N. E. J. Bjerrum-Bohr, J. F. Donoghue and P. Vanhove, *JHEP* **1402**, 111 (2014) doi:10.1007/JHEP02(2014)111 [arXiv:1309.0804 [hep-th]].
- [17] N. E. J. Bjerrum-Bohr, B. R. Holstein, L. Planté and P. Vanhove, *Phys. Rev. D* **91**, no. 6, 064008 (2015) doi:10.1103/PhysRevD.91.064008 [arXiv:1410.4148 [gr-qc]].
- [18] N. E. J. Bjerrum-Bohr, J. F. Donoghue, B. R. Holstein, L. Planté and P. Vanhove, *Phys. Rev. Lett.* **114**, no. 6, 061301 (2015) doi:10.1103/PhysRevLett.114.061301 [arXiv:1410.7590 [hep-th]].
- [19] N. E. J. Bjerrum-Bohr, J. F. Donoghue, B. R. Holstein, L. Planté and P. Vanhove, *JHEP* **1611**, 117 (2016) doi:10.1007/JHEP11(2016)117 [arXiv:1609.07477 [hep-th]].
- [20] F. Cachazo and A. Guevara, arXiv:1705.10262 [hep-th].
- [21] A. Guevara, arXiv:1706.02314 [hep-th].
- [22] N. E. J. Bjerrum-Bohr, P. H. Damgaard, G. Festuccia, L. Planté and P. Vanhove, arXiv:1806.04920 [hep-th].
- [23] J. F. Donoghue, *Phys. Rev. Lett.* **72**, 2996 (1994) doi:10.1103/PhysRevLett.72.2996 [gr-qc/9310024].
- [24] J. F. Donoghue, *Phys. Rev. D* **50**, 3874 (1994) doi:10.1103/PhysRevD.50.3874 [gr-qc/9405057].
- [25] J. F. Donoghue and T. Torma, *Phys. Rev. D* **54**, 4963 (1996) doi:10.1103/PhysRevD.54.4963 [hep-th/9602121].
- [26] J. F. Donoghue, B. R. Holstein, B. Garbrecht and T. Konstandin, *Phys. Lett. B* **529**, 132 (2002) Erratum: [*Phys. Lett. B* **612**, 311 (2005)] doi:10.1016/S0370-2693(02)01246-7, 10.1016/j.physletb.2005.03.018 [hep-th/0112237].
- [27] N. E. J. Bjerrum-Bohr, J. F. Donoghue and B. R. Holstein, *Phys. Rev. D* **68**, 084005 (2003) Erratum: [*Phys. Rev. D* **71**, 069904 (2005)] doi:10.1103/PhysRevD.68.084005, 10.1103/PhysRevD.71.069904 [hep-th/0211071].
- [28] N. E. J. Bjerrum-Bohr, J. F. Donoghue and B. R. Holstein, *Phys. Rev. D* **67**, 084033

- (2003) Erratum: [Phys. Rev. D **71**, 069903 (2005)] doi:10.1103/PhysRevD.71.069903, 10.1103/PhysRevD.67.084033 [hep-th/0211072].
- [29] B. R. Holstein and J. F. Donoghue, Phys. Rev. Lett. **93**, 201602 (2004) doi:10.1103/PhysRevLett.93.201602 [hep-th/0405239].
- [30] T. Damour, Phys. Rev. D **94**, no. 10, 104015 (2016) doi:10.1103/PhysRevD.94.104015 [arXiv:1609.00354 [gr-qc]].
- [31] T. Damour, Phys. Rev. D **97**, no. 4, 044038 (2018) doi:10.1103/PhysRevD.97.044038 [arXiv:1710.10599 [gr-qc]].
- [32] H. Kawai, D. C. Lewellen and S. H. H. Tye, Nucl. Phys. B **269**, 1 (1986) doi:10.1016/0550-3213(86)90362-7.
- [33] Z. Bern, J. J. M. Carrasco and H. Johansson, Phys. Rev. D **78**, 085011 (2008) doi:10.1103/PhysRevD.78.085011 [arXiv:0805.3993 [hep-ph]]; Z. Bern, J. J. M. Carrasco and H. Johansson, Phys. Rev. Lett. **105**, 061602 (2010) doi:10.1103/PhysRevLett.105.061602 [arXiv:1004.0476 [hep-th]].
- [34] R. Monteiro, D. O’Connell and C. D. White, JHEP **1412**, 056 (2014) doi:10.1007/JHEP12(2014)056 [arXiv:1410.0239 [hep-th]].
- [35] A. Luna, R. Monteiro, I. Nicholson, D. O’Connell and C. D. White, JHEP **1606**, 023 (2016) doi:10.1007/JHEP06(2016)023 [arXiv:1603.05737 [hep-th]].
- [36] W. D. Goldberger and A. K. Ridgway, Phys. Rev. D **95** (2017) 125010 doi:10.1103/PhysRevD.95.125010 [arXiv:1611.03493 [hep-th]].
- [37] A. Luna, R. Monteiro, I. Nicholson, A. Ochirov, D. O’Connell, N. Westerberg and C. D. White, JHEP **1704**, 069 (2017) doi:10.1007/JHEP04(2017)069 [arXiv:1611.07508 [hep-th]].
- [38] A. Luna, R. Monteiro, I. Nicholson and D. O’Connell, arXiv:1810.08183 [hep-th].
- [39] W. D. Goldberger, S. G. Prabhu and J. O. Thompson, Phys. Rev. D **96**, no. 6, 065009 (2017) doi:10.1103/PhysRevD.96.065009 [arXiv:1705.09263 [hep-th]].
- [40] C. H. Shen, arXiv:1806.07388 [hep-th].
- [41] W. D. Goldberger and A. K. Ridgway, Phys. Rev. D **97**, no. 8, 085019 (2018) doi:10.1103/PhysRevD.97.085019 [arXiv:1711.09493 [hep-th]].
- [42] J. Plefka, J. Steinhoff and W. Wormsbecher, arXiv:1807.09859 [hep-th].
- [43] W. D. Goldberger, J. Li and S. G. Prabhu, Phys. Rev. D **97**, no. 10, 105018 (2018) doi:10.1103/PhysRevD.97.105018 [arXiv:1712.09250 [hep-th]].
- [44] J. Li and S. G. Prabhu, Phys. Rev. D **97**, no. 10, 105019 (2018) doi:10.1103/PhysRevD.97.105019 [arXiv:1803.02405 [hep-th]].
- [45] B. R. Holstein and A. Ross, arXiv:0802.0716 [hep-ph].

- [46] C. Cheung, I. Z. Rothstein and M. P. Solon, arXiv:1808.02489 [hep-th].
- [47] A. Laddha and A. Sen, JHEP **1809**, 105 (2018) doi:10.1007/JHEP09(2018)105 [arXiv:1801.07719 [hep-th]].
- [48] H. A. Lorentz, Arch. Néerl. Sci. Exactes Nat. 25, 363 (1892).
- [49] M. Abraham, Ann. d. Phys. 10, 105 (1903); “Theorie der Elektrizität”, vol. II (Teubner, Leipzig, 1905); Ann. d. Phys. 14, 236 (1904).
- [50] P. A. M. Dirac, Proc. Roy. Soc. Lond. A **167**, 148 (1938) doi:10.1098/rspa.1938.0124.
- [51] L. D. Landau and E. M. Lifshitz, *The Classical Theory of Fields*, 4th ed., ISBN 978-0750627689 (Butterworth-Heinemann, Oxford, 1975).
- [52] A. Higuchi, Phys. Rev. D **66**, 105004 (2002) Erratum: [Phys. Rev. D **69**, 129903 (2004)] doi:10.1103/PhysRevD.66.105004, 10.1103/PhysRevD.69.129903 [quant-ph/0208017].
- [53] C. R. Galley, B. L. Hu and S. Y. Lin, Phys. Rev. D **74**, 024017 (2006) doi:10.1103/PhysRevD.74.024017 [gr-qc/0603099].
- [54] C. R. Galley, A. K. Leibovich and I. Z. Rothstein, Phys. Rev. Lett. **105**, 094802 (2010) doi:10.1103/PhysRevLett.105.094802 [arXiv:1005.2617 [gr-qc]].
- [55] O. Birnholtz, S. Hadar and B. Kol, Phys. Rev. D **88**, no. 10, 104037 (2013) doi:10.1103/PhysRevD.88.104037 [arXiv:1305.6930 [hep-th]].
- [56] O. Birnholtz, S. Hadar and B. Kol, Int. J. Mod. Phys. A **29**, no. 24, 1450132 (2014) doi:10.1142/S0217751X14501322 [arXiv:1402.2610 [hep-th]].
- [57] O. Birnholtz, Int. J. Mod. Phys. A **30**, no. 02, 1550011 (2015) doi:10.1142/S0217751X15500116 [arXiv:1410.5871 [physics.class-ph]].
- [58] M. H. Al-Hashimi and U.-J. Wiese, Annals Phys. **324**, 2599 (2009) doi:10.1016/j.aop.2009.09.001 [arXiv:0907.5178 [quant-ph]].
- [59] D. Amati, M. Ciafaloni and G. Veneziano, Phys. Lett. B **197**, 81 (1987) doi:10.1016/0370-2693(87)90346-7; G. 't Hooft, Phys. Lett. B **198**, 61 (1987) doi:10.1016/0370-2693(87)90159-6; I. J. Muzinich and M. Soldate, Phys. Rev. D **37**, 359 (1988) doi:10.1103/PhysRevD.37.359; D. Amati, M. Ciafaloni and G. Veneziano, Int. J. Mod. Phys. A **3**, 1615 (1988) doi:10.1142/S0217751X88000710.
- [60] D. Amati, M. Ciafaloni and G. Veneziano, Nucl. Phys. B **347**, 550 (1990) doi:10.1016/0550-3213(90)90375-N.
- [61] D. Amati, M. Ciafaloni and G. Veneziano, Phys. Lett. B **289**, 87 (1992) doi:10.1016/0370-2693(92)91366-H; D. N. Kabat and M. Ortiz, Nucl. Phys. B **388**, 570 (1992) doi:10.1016/0550-3213(92)90627-N [hep-th/9203082]; D. Amati, M. Ciafaloni and G. Veneziano, Nucl. Phys. B **403**, 707 (1993) doi:10.1016/0550-3213(93)90367-X;

- I. J. Muzinich and S. Vokos, Phys. Rev. D **52**, 3472 (1995)
doi:10.1103/PhysRevD.52.3472 [hep-th/9501083].
- [62] G. D’Appollonio, P. Di Vecchia, R. Russo and G. Veneziano, JHEP **1011**, 100 (2010)
doi:10.1007/JHEP11(2010)100 [arXiv:1008.4773 [hep-th]].
- [63] S. Melville, S. G. Naculich, H. J. Schnitzer and C. D. White, Phys. Rev. D **89**, no. 2,
025009 (2014) doi:10.1103/PhysRevD.89.025009 [arXiv:1306.6019 [hep-th]];
R. Akhoury, R. Saotome and G. Sterman, arXiv:1308.5204 [hep-th]; G. D’Appollonio,
P. Di Vecchia, R. Russo and G. Veneziano, JHEP **1505**, 144 (2015)
doi:10.1007/JHEP05(2015)144 [arXiv:1502.01254 [hep-th]]; M. Ciafaloni, D. Colferai
and G. Veneziano, Phys. Rev. Lett. **115**, no. 17, 171301 (2015)
doi:10.1103/PhysRevLett.115.171301 [arXiv:1505.06619 [hep-th]]; G. D’Appollonio,
P. Di Vecchia, R. Russo and G. Veneziano, JHEP **1603**, 030 (2016)
doi:10.1007/JHEP03(2016)030 [arXiv:1510.03837 [hep-th]]; M. Ciafaloni, D. Colferai,
F. Coradeschi and G. Veneziano, Phys. Rev. D **93**, no. 4, 044052 (2016)
doi:10.1103/PhysRevD.93.044052 [arXiv:1512.00281 [hep-th]].
- [64] A. Luna, S. Melville, S. G. Naculich and C. D. White, JHEP **1701**, 052 (2017)
doi:10.1007/JHEP01(2017)052 [arXiv:1611.02172 [hep-th]].
- [65] A. K. Collado, P. Di Vecchia, R. Russo and S. Thomas, JHEP **1810**, 038 (2018)
doi:10.1007/JHEP10(2018)038 [arXiv:1807.04588 [hep-th]].
- [66] J. Sucher, Phys. Rev. D **49**, 4284 (1994). doi:10.1103/PhysRevD.49.4284
- [67] A. Luna, I. Nicholson, D. O’Connell and C. D. White, JHEP **1803**, 044 (2018)
doi:10.1007/JHEP03(2018)044 [arXiv:1711.03901 [hep-th]].
- [68] J. D. Jackson, *Classical Electrodynamics*, ISBN 978-0471309321 (3rd ed.) (Wiley, New
York, 1998).
- [69] J. Schwinger, L. L. DeRaad, Jr., K. A. Milton and W. Y. Tsai, *Classical
Electrodynamics*, ISBN 978-0738200569 (Perseus, 1998).